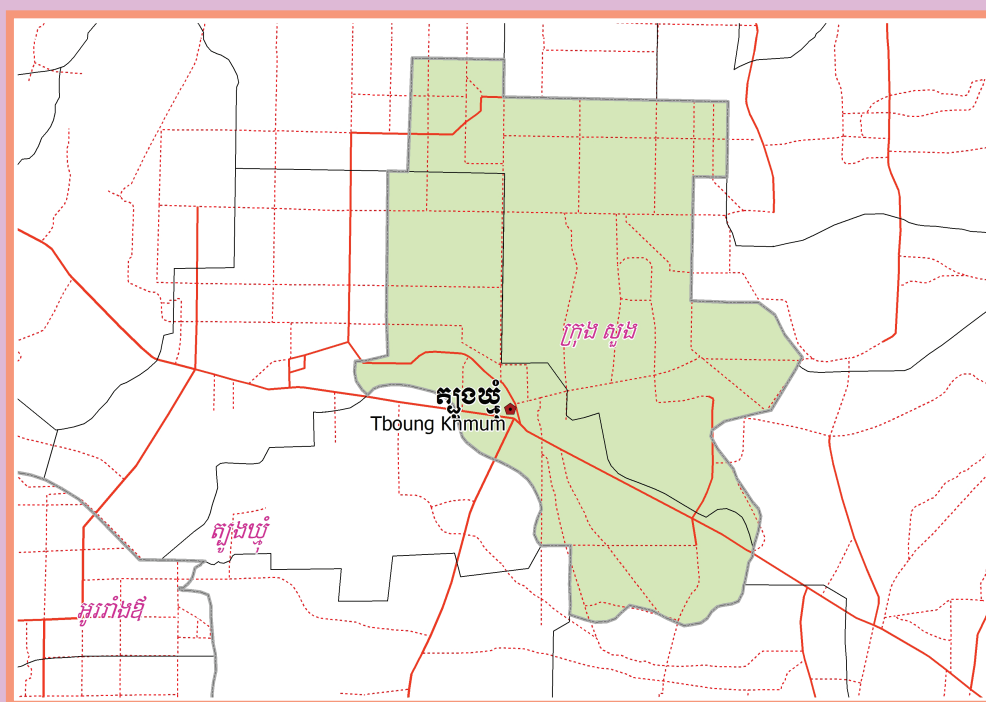


**KINGDOM OF CAMBODIA**  
**Nation Religion King**



**National Committee for Sub-National  
Democratic Development (NCDD)**



**SUONG KRONG DATA BOOK 2009**

**Krong Code Nr: 317**  
**Kampong Cham Province**

**October 2009**



# **Suong Krong Data Book 2009**

District Code Nr: 317

**Kampong Cham Province**



# Table of Contents

List of Abbreviations .....	i
Glossary.....	ii
Preface .....	vi
Introduction .....	vii
SECTION A: GEOGRAPHY .....	1
1 Administration and Infrastructure.....	3
2 Land Use and Natural Resources.....	5
3 Geography .....	7
3.1 Land Area .....	7
3.2 Distances between Offices .....	7
SECTION B: DISTRICT PROFILE .....	9
1 General Information .....	11
1.1 Population of the District.....	11
1.2 Occupations .....	12
1.3 Property .....	14
2 Infrastructure and Economy.....	16
2.1 Roads in meters over 3 years.....	16
2.2 Sewerage Pipes in meters over 3 years.....	16
2.3 Drainage and Bridges .....	16
2.4 Services in the District .....	16
2.5 Agriculture.....	17
3 Social Aspects .....	27
3.1 Education .....	27
3.2 Health.....	32
3.3 Water and Sanitation .....	34
3.4 Vulnerable groups.....	37
3.5 Migration .....	39
4 Natural Resources and Environment (NRE).....	41
4.1 Families involved with NRE issues over 3 years .....	41
4.2 Percentage of Families involved with Natural Resource issues, by Commune, for 2008 .....	41
4.3 Percentage Houses with access to Garbage collection and Families affected by environmental Pollution, by Commune, for 2008 .....	41
4.4 Percentage Families using chemical Fertilizer and chemical Pesticides, by Commune, for 2008 ..	41
5 Administration and Security .....	42

5.1	Birth Registration across 3 years.....	42
5.2	Number of unregistered Infants born in 2008, by Commune .....	42
5.3	Registered criminal Cases over 3 years .....	42
5.4	Registered criminal Cases per 10,000 people, by Commune, for 2008.....	42
5.5	Number of registered Land Disputes, by Commune, in 2008 .....	42
6	Gender .....	43
6.1	Registered Domestic Violence over 3 years.....	43
6.2	Percentage of registered cases of Families experiencing domestic Violence, by Commune, in 2008 .....	43
6.3	Women's involvement over 3 years.....	43
6.4	Percentage of Female Participants in Civil Society and of 18-60 year women with uncertain Jobs, by Commune, in 2008 .....	44
6.5	Female-headed Households over 3 years.....	44
6.6	Percentage female-headed Households and with Children of less than 5 years old, by Commune, in 2008 .....	44
7	Indigenous People in the District .....	45
7.1	Ethnic Minorities in the District over 3 years.....	45
7.2	Other Minorities in the District over 3 years.....	45
	SECTION C: PLANS AND PROJECTS .....	47
8	Priorities and Plans .....	49
8.1	Priorities of Commune Councils for 2009 in the District by Sector .....	49
8.2	Temporary Agreements by Commune, for 2009 .....	53
8.3	Outputs, estimated and actual costs of C/S Fund Projects between 2005 and 2008, by Commune .....	57
8.4	Total Expenditure on C/S Fund Projects by sector and commune between 2005 and 2008.....	57
8.5	Actual 2009 C/S Fund projects by Commune .....	58
9	District level Projects from 2006 to 2009 .....	59
9.1	District Initiative Infrastructure Projects from 2006 to 2009 .....	59
9.2	District Initiative Service Projects from 2006 to 2009 .....	59
9.3	Inter Commune Council Projects in 2008 and 2009 .....	60
9.4	Other Projects in 2008 and 2009 .....	62
	SECTION D: SERVICES AND ORGANIZATIONS .....	63
10	Infrastructure.....	65
10.1	Length of and Expenditure on Roads in 2008, by District .....	65
10.2	Scale of and Expenditure on Irrigation in 2008, by District.....	66
10.3	Power Supply in 2008, by District .....	67
11	Health Facilities.....	68

11.1 Health Facilities in the Province, by Operational District.....	68
11.2 Health Facilities and Staff in the province, by Operational District.....	69
11.3 Deliveries in 2007 in the Province, by Operational District.....	74
12 Education .....	75
12.1 Schools, Classes, Students, Staff, for for all levels, for 2007/2008 by District.....	75
12.2 Characteristics of Schools and School Principals for 2007/2008 by Commune .....	76
12.3 Enrolment by Level of Education, 2006/2007 by Commune .....	76
12.4 Enrolment by Level of Education, 2007/2008 by Commune .....	76
12.5 Aspects of Enrolment for 2007/2008 by Commune.....	76
12.6 School Buildings for all schools in the District for 2007/2008, by Commune .....	77
12.7 Conditions of Classrooms and Existence of Separate School Office and Library, by Commune .....	77
12.8 Community Participation and Financing across all schools in the District for 2007/2008 by Commune .....	77
12.9 Percentage Student Flow Rates and Graduation by level 2006/2007, by Commune .....	77
13 Staff and Resources at the District .....	78
13.1 District Councilors elected in 2009 .....	78
13.2 Committees of the Council.....	78
13.3 Board of Governors.....	78
13.4 Offices under Sala Krong, Sala Srok and Sala Khan .....	79
13.5 Municipality/District/Khan line offices.....	79
13.6 Properties and Equipment of District Administration .....	79
13.7 Registered Revenue of the District Administration in 2008 .....	80
13.8 Services in the District .....	80
13.9 Civil Society Organizations active in the District.....	81
13.10 Private Sector Organizations.....	82
SECTION E: POVERTY DATA .....	85
14 Data on Poverty .....	87
14.1 Predicted Poverty Rates for 2009, by commune .....	87
14.2 Poverty data from survey.....	87





## List of Abbreviations

#	Number
AGR	Agriculture
BR	Birth Registration
C. Pilot	Piloted Commune
C/S	Commune / Sangkat
CBO	Community-Based Organization
CDB	Commune Database
CDPD	Commune Development and Planning Database
CIP	Commune Investment plan
CLTS	Community Led-Total Sanitation
Comm.	Commune
Com Cov	Commune Covered
CPA	Complementary Package of Activities
CPS	Community Preschool
CCWC	Commune Committees for Women and Children
DANIDA	Danish International Development Agency
DDLG	Democratic Development and Local Governance Project (EC-UNDP)
DFID	Department For International Development (UK)
DIP	District Initiative Project
DIS	District Information System
District PDRD	District Office of Rural Development
District WP	District Work Plan
DIW	District Integration Workshop
DoLA	Department of Local Administration
Dr	Doctor
DWRM	District Office of Water Resource and Meterology
ECD	Early Childhood education (part of PE)
EMIS	Education Management Information System
Event IC	Celebration of International Days
FDH	Former District Hospital
GTZ	German Society for Technical Cooperation (Gesellschaft für Technische Zusammenarbeit GmbH)
Ha	Hectare
HC	Health Center
HC (NB)	Health Center (no building)
HH	Headed Household
HSI	Intervention for Health
HP	Health Post
HW	Hand Washing
ICC	Inter Commune Council
IFAD	International Fund for Agricultural Development
IND	Industry
Inter-commune	Inter-Commune Project Management Committee or Inter-commune project
IO	International Organization
LASED	Land Allocation for Socio-Economic Development
LGCR	Local Governance for Children's Rights
M&E	Monitoring and Evaluation
MA	Medical Assistant
MoEYS	Ministry of Education, Youth and Sports
MoH	Ministry of Health

MoP	Ministry of Planning
MPA	Minimum Package of Activities
MW1	Primary Midwives
MW2	Secondary Midwives
n/a	Not available
NCD	National Contracts Database
NCDD	National Committee for Sub-National Democratic Development
NGO	Non-Governmental Organization
NRML	Natural Resources Management and Livelihood
NU1	Primary Nurse
NU2	Secondary Nurse
OD	Operational District
ODF	Open Defecation Free
Ope. Costs	Operational Costs
Others	Other Staff
PBW	Public Works
PDoEYS	Provincial Department of Education, Youth and Sport
PDRD	Provincial Department of Rural Development
PDWRM	Provincial Department of Water Resource and Meteorology
PE	Parenting Education
PHAST	Participatory Hygiene and Sanitation Transformation
PHD	Provincial Health Department
PID	Project Information Database
PMC	Project Management Committee
Pop 04-05	Population Covered 2004 or 2005
PSDD	Project to Support Democratic Development through Decentralization and Deconcentration
RRD	Rural Road Development
RH	Referral Hospital
RILGP	Rural Investment and Local Governance Project
RPRP	Rural Poverty Reduction Program
RuLIP	Rural Livelihoods Improvement Program
SIDA	Swedish International Development Cooperation Agency
SPPA	Senior Provincial Program Advisor
TBA	Traditional Birth Attendant
UNDP	United Nations Development Project
UNICEF	United Nations Children's Fund
Vil	Village
Vil Cov	Village Covered
VIL-HC	Distance from Village to Health Center
WASH	Water, Sanitation and Hygiene
WRM	Water Resource and Meteorology

## Glossary

**C/S Fund:** The Commune/Sangkat Fund is established and managed by the Government of Cambodia to provide financial support for development projects and administrative costs of Commune/Sangkat Councils. The amount is determined as a percentage of the National Budget (for 2009: 2.8% over the 2008 budget) and is expected to increase gradually over the years. The total 2009 budget under this fund is \$ 27,643,902 (of which \$ 19,272,170 is for Development Projects and \$ 8,371,731 for Administration). Under the Rural Investment and Local Governance Project the World Bank currently reimburses the costs of development projects if these meet the Bank's criteria.

**CDB:** the Commune Data Base is a national database, compiled by the Ministry of Planning, on the basis of detailed questionnaires, completed at village and commune level, which are then sent to the Departments of Planning for data entry. The most recent round of data collection took place at the end of 2008 (and is reflected in the District Data Books). Commune, District and Provincial Profiles can be generated from this database and should be available from provincial Departments of Planning.

**CDPD:** the Commune Development and Planning Database is a database maintained by Departments of Planning and Ministry of Planning, recording proposed activities as determined and prioritized by Commune and Sangkat Councils; the Temporary Agreements between these councils and supporting agencies, as decided at District Integration Workshops and details on projects that actually take place at commune, district and provincial levels.

**CIP:** The Commune Investment Plan is a rolling three-year plan, developed and decided by the Commune or Sangkat Council. It sets priorities and identifies the projects proposed for the years to come.

**Commune and Sangkat (C/S):** the Communes (in rural areas) and Sangkats (in urban areas) are the lowest and smallest units of local government. Councils are elected directly, once in five years, for the 1417 Communes and 204 Sangkats. In the C/S there are 14,119 villages, which have Village Chiefs, but don't constitute a formal level of local government.

**DIP:** the District Initiative Project is jointly supported by the MDLF (Multi-Donor Livelihood Facility (supporting the NRM&L Program)) and PSDD. In 2009 it covers 106 districts, 60% of the total in the country, with a budget of \$ 3.2 million. It is focused on capacity development in planning, democratic development, public competitive procurement, financial management and service delivery.

**DIS:** The District Information System is a national database maintained by NCDD, recording resources, staff, revenue, infrastructure and equipment available in the 193 Districts and Khans throughout the country. The last update took place in July 2009

**District, Municipality and Khan** constitutes the third level of Government in Cambodia. There are 159 rural Districts, 26 Municipalities and 8 Khans of Phnom Penh Capital. They all have Councils which were, for the first time, elected in May 2009, by the Commune/Sangkat Councilors. These councils have a mandate for 5 years.

**DIW:** District Integration Workshops are held between July and October, to bring Commune/Sangkat Councils, looking for support for their projects, together with the governmental and non-governmental agencies that may provide support.

**ICC:** Inter Communes Council projects are executed in 10 provinces under the Democratic and Decentralized Local Governance Project (DDLG). This five year project (2006-2010) is executed by Ministry of Interior and funded by the European Commission and UNDP. The project focuses on improving dialogue partnership and accountability; create a network of Commune Councils at the provincial and national level and support and contribute to local area development for poverty reduction. The work under the ICC component supports investments and services formulated through inter-commune dialogue and planning.

**MEDiCAM:** A non-profit and non-partisan membership organization for NGOs active in Cambodia's health sector. It is the primary networking agency for health-related NGOs

**NCDD:** the National Committee for sub-National Democratic Development is the inter-ministerial body charged with the implementation of the Organic Law (a key legislative document, adopted in 2008, outlining the envisaged decentralization). NCDD also channels substantial financial assistance by a number of Development Partners, to projects and programs at various levels. This amounted to over \$ 91 million in 2008. More information at: [www.ncdd.gov.kh](http://www.ncdd.gov.kh). This website also provides access to reports, manuals, legal documents, details on projects and more.

**OD:** the Operational Districts are the districts as defined and used by the Ministry of Health. These do not coincide with the 193 (Administrative) Districts and Khans, as used by all other RGC agencies. The Operational Districts are usually larger, and so there are 77 Operational Districts against 193 administrative Districts and Khans. However they do fit within the boundaries of administrative provinces.

**PID:** The Project Information Database is the database maintained by NCDD at national and sub national level, to follow all aspects of projects by Commune and Sangkat Councils, including the C/S Fund projects

### **Provincial Investment Fund (PIF)**

The Provincial Investment Fund is allocated to all Provinces and Municipalities according to a population based formula. Part of the fund is earmarked for support to planning activities of the Provincial / Municipal Department of Planning; and to gender mainstreaming activities of the Provincial Department of Women's Affairs. The remaining "un-earmarked PIF" is allocated by PRDC to sectoral technical departments against established criteria and in response to proposals with prioritisation taking into account: priorities formulated by the CS Councils and aggregated by District into District Priority Activities Matrices (DPAM); alignment with national planning and poverty alleviation criteria, complementarity with other planned activities; and performance of the Department concerned in implementation of activities in previous years. With this provisional allocation, the Department then programs activities through the District Integration Process. Finally, the agreed activities, plus support costs amounting to no more than 25% of the total, are included in a sub-contract signed between PRDC and the Department, pursuant to the overall PSDD contract signed between NCDD and PRDC. Total budget has been around \$ 2 million per year.

**Province:** the 23 Provinces and Phnom Penh Capital City represent the 2<sup>nd</sup> layer of government. They vary in size, from very small, like Kep (approx. 36,000 people) and Pailin (approx. 70,000 people), or large but with small populations, like Mondulkiri (over 60,000 people), and Ratanakiri (over 153,000) to densely populated and large, like Kampong Cham (over 1.7 million people) and Kandal (approx. 1.4 Million people).

**PSDD:** the Project to Support Democratic Development through Decentralization and Deconcentration is funded by DFID (UK), SIDA (Sweden) and UNDP and runs from 2006 till the end of 2010 (including a one year extension). Annual budgets range from \$ 11 million to over \$ 18 million. The project provides core technical support to NCDD and to the provinces, financial support to the C/S Fund, District Initiative, Provincial Investment Fund and capacity building support through training, studies and advisory services.

**RILGP:** The Rural Investment and Local Governance Project is a World Bank funded project that provides substantial support to C/S Fund projects and to developing the required infrastructure, policies, systems and skills. It started in 2003 with a Loan for \$ 22 million for 2003-2007 and was then extended with a Grant of \$ 36 million for the period of 2007-2010. Discussions about a possible RILGP 2 are taking place between RGC and the World Bank.

**RPRP:** the Rural Poverty Reduction Project is a seven year project from 2004 till 2010, funded by IFAD and UNDP and implemented through the Ministry of Agriculture, Forestry and Fishery, supported by the Ministry of Interior and facilitated by NCDD. The project is active in the provinces Prey Veng and Svay Rieng and focuses on 120,600 households below poverty line. The objective is poverty reduction with the active participation of the poor through improved livelihoods, Strengthened capacity, Sustainable farming systems and natural resource management, new and/or rehabilitated infrastructure development, increase accessibility to technology, services and markets for their economic and social development.

**RULIP:** the Rural Livelihoods Improvement Project is implemented by the Ministry of Agriculture Forestry and Fisheries (MAFF)' Project Support Unit- PSU, with the NCDD playing the role of cooperating agency. Funded by IFAD and UNDP, the project will run till 2014. The target group consists of poor households who have little or even no land, few livestock or other assets and often many dependents. The main goal of the project is to directly or indirectly improve the livelihood systems, food security and incomes of a total of 33,900 rural poor, ethnic minority and female headed households in targeted village of Kratie, Preah Vihear and Ratanakiri provinces in a sustainable manner.

**Seth Koma:** The UNICEF funded Seth Koma program focuses on measurable action for children and women. During 2006 -2010 it is implemented in six provinces. Government and UNICEF pursue a set of inter-related goals, addressing critical stages of the life cycle of the child: a) Mothers have safe pregnancies and deliveries and healthy newborns; b) best possible start in life of infant; c) Children enter schools at the right age of six years; d) Children are protected from exploitation, abuse, violence, discrimination and other risks; and e) Youth and adolescents acquire life skills, express their views, participate in the decisions.

## **Preface**

The Government of Cambodia attaches great importance to optimal use of scarce resources and to participatory planning and management at all levels. The Organic Law which was adopted in 2008 provides the legal context for further steps towards improving and decentralizing planning, management and monitoring, and towards greater accountability and transparency of institutions at sub-national levels.

The Government has established elected Councils at the sub-national levels, and we will progressively give them the responsibilities, together with the human and financial resources, to deliver a wide range of public services. They will be more democratic, more efficient, more transparent and accountable, better at addressing gender and other inequalities, and at fighting corruption. We recognize that development does not come from government alone; it needs the involvement of citizens, civil society and the private sector, and the new system will facilitate this.

A central element in this process is the availability of information on any aspect of development to all concerned parties. The newly elected Councillors at District and Khan level, line departments operating at these levels, but also NGOs, Development Partners, Commune Councillors and citizens throughout Cambodia need information on problems and requirements, resources and opportunities, services and agencies, plans and projects. They will need such information to better understand the present situation, set targets for the future, monitor progress, know what others are doing and to apply resources wisely and this is the reason the District Data books will be so valuable.

The District Data Books are a major step towards full transparency and towards informed planning and decision-making. They provide all available data at District, Khan, Commune and Sangkat level in easily accessible formats, in Khmer and English, through over 16,000 printed copies, CD-ROMs and the NCDD website.

This is the first time in Cambodia (and possibly in South East Asia) that such detailed information is made so widely available and NCDD should be commended for the hard work that has gone into this. We also thank the Ministry of Planning, which provided the detailed data of the Commune Data Base, the sectoral ministries and provincial authorities who contributed data and the Development Partners who provided financial support.

It is our sincere hope that the publication of the District Data Books will strengthen capacities, especially at district levels, for evidence-based development planning. We also hope that this information will deepen the understanding among Ministries, Provincial Authorities, Development Partners, NGOs and research agencies of the realities at commune and district levels.

We call upon all to use and distribute this information, complement or correct where appropriate and to contribute new data in the years to come.

**Sar KHENG**

Deputy Prime Minister, Minister of Interior and Chairman of NCDD

# Introduction

## Purpose

The purpose of the District Data Books is to bring together information on any aspect of life and development of Districts, Khans, Communes and Sangkat, together and make this widely available. The primary targets are the newly elected District Councilors, district level line departments, provincial agencies, Development Partners and NGOs operating at this level. They need detailed knowledge on current living conditions, natural resources, infrastructure, agriculture and other economic activities, current service levels, past and planned projects and available resources.

While much information exists on many of the above aspects, it is often hard to access that information and much is lost to reports, databases and statistics that are not widely shared. Data are often only available in one language and often out-of-date, and many reports cover only one sector or region.

We found that these problems are especially acute at the district level. Now that Districts are becoming a much more significant level of local government and development planning, there is an urgent need for wide-ranging data to be used for setting base-lines, planning and prioritizing, monitoring and learning.

## Approach

We have attempted to identify and compile all available statistics, reports, maps and other data at district and/or commune level. From this we have selected information that is available for all or most districts, reasonably reliable and up-to-date, sufficiently detailed and of possible interest to development planners, decision makers, agencies and citizens.

The major sources of the information in these District Data Books are:

- a) The Commune Data Base information over the years 2006 to 2009 (the most recent data were collected late last 2008), as compiled by the Ministry of Planning
- b) Detailed information directly collected from the Ministry of Health, the Ministry of Education, Youth and Sports and (for maps) the Ministry of Land Management, Urban Planning and Construction
- c) The Project Information Database (PID) at NCDD (up-to-date)
- d) The Commune Development and Planning Database (CDPD) (up to date)
- e) The District Information System (DIS) (updated per Mid 2009)
- f) Direct data collection at provincial and district level on private sector, irrigation, roads, and electricity, through provincial agencies
- g) Medical data collected from MEDiCAM
- h) The ID Poor Project – for poverty data on a number of provinces and districts
- i) NCDD's work on predictive poverty rates
- j) Specific projects for outputs, plans and budgets (Seth Koma, RILGP, RPRP and ICC)

## Limitations of the data

We are fully aware that the data we collected are not always complete, consistent or correct. While we have rejected information that was wrong or very incomplete, we decided not to aim for statistical and scientific perfection, but to include information that is useful, relevant

and comprehensive. We also accepted different sources for the same data as this may encourage discussion on the quality of the respective data.

We strongly encourage anyone who notes errors or incompleteness in these data to contact us and to share their data. We hope that the next round of producing such District Data Books can draw on wider sources and more complete data.

We encourage the District Administrations, who receive these data also in digital format, not only to use these for their planning and monitoring, but also to start correcting and updating these data and to share new data with NCDD for future use.

## Contents

The information in the following pages is organized in five sections:

- a) **Geographical data:** this section provides maps on infrastructure and administration and on land use and natural resources management. These maps are also provided in large format to all Districts and Khans.
- b) **District Profile:** this presents wide ranging data, covering 2006 – 2009, at district and commune level, extracted from the Commune Data Base, but edited for better understanding.
- c) **Plans and Projects:** this section presents development priorities determined by Commune and Sangkat Councils, Temporary Agreements, outputs and expenditure of major projects at Commune and District level over 2006 – 2008 and plans and budgets for 2009.
- d) **Services and Organizations:** this section provides details on key infrastructure (roads, electricity, irrigation systems) and services in health and education at district and commune level. It also provides an inventory of resources at the District Administration, NGOs operating in the district and private sector agencies active in the district.
- e) **Poverty Data:** this section provides predicted poverty rates for 2009 for all districts and communes and detailed poverty data compiled and processed by the ID Poor project for those that have been covered by this project.

## The future

It is our hope that this is the start of a longer-term process. We hope that a next edition of these District Data Books will offer more comprehensive, correct and up-to-date information. We hope that the District Administrations will not only start using this information, but also improve and update it. For this they are all provided with the full data set in digital format.

We invite agencies, projects and experts to send reports, statistics and maps that could be used for a next version to us and we invite all users of the District Data Books to inform us about errors, updates and inconsistencies. Please contact us through [info@ncdd.gov.kh](mailto:info@ncdd.gov.kh)

We now invite you to browse through this data book. You may open this randomly or use the table of contents and go to the aspects that have your special interest.

We hope that you will be informed, surprised and assisted. We hope, above all, that this information will lead to a deeper understanding of causes and effects of poverty, to purposeful decisions on how to tackle those causes and to greater transparency in using scarce resources for the benefit of all.

Martin de Graaf  
Program Advisor, PSDD/NCD



## **SECTION A: GEOGRAPHY**



# **1 Administration and Infrastructure**

Please see separate folder containing A3 maps.



## **2 Land Use and Natural Resources**

Please see separate folder containing A3 maps.



### 3 Geography

#### 3.1 Land Area

Total Land Area (ha)	Forest Land Area (ha)		Cultivation Land Area (ha)	Construction Land Area (ha)	Other Land Area (ha)
	Total	Flooded Forest Area			
8071	0	0	6911	1066	94

#### 3.2 Distances between Offices

Location	Distance (Km)
From District Office to C/S Office of Sangkat Suong	0
From District Office to C/S Office of Sangkat Vihear Luong	0





## **SECTION B: DISTRICT PROFILE<sup>1</sup>**

---

<sup>1</sup> All data in this section come from the Commune Database (CDB) unless otherwise specified. These include primarily new CDB data, collected late 2008, and some data from earlier years. Please note that percentages are rounded to the nearest whole number.



# 1 General Information

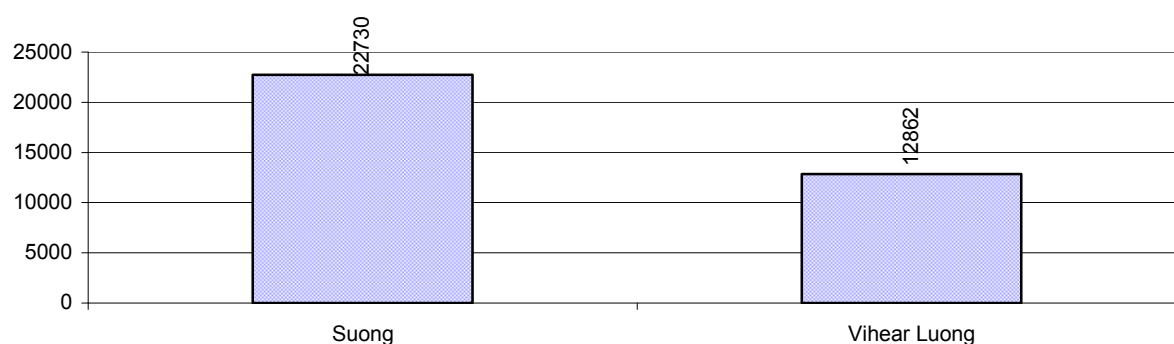
## 1.1 Population of the District

### 1.1.1 Total Population

Number of families	2005	2006	2007	2008
Total number of families	7,054 families	7,290 families	7,472 families	7,702 families
Increase (+)/Decrease (-) in nr of families		3%	2%	3%
Total population	34,606 pers	35,774 pers	37,977 pers	35,592 pers
Increase (+)/Decrease (-) in nr of people		3%	6%	-6%
Number of female Headed Households (HH)	1,035 families	1,032 families	1,040 families	1,097 families

**Note:** Percentages of population and increase/decrease are calculated on basis of the previous year. A negative sign in front of the percentage indicates a decrease in population.

### 1.1.2 Population, by Commune, in 2008



### 1.1.3 Population, by Age Group, over 3 years

Population by age group	2006	2007	2008	
	%	%	%	Number
<b>Age 0-5 years (as percentage of the population)</b>	11%	16%	12%	4,159 persons
Male 0-5 yrs	50%	35%	52%	2,169 persons
Female 0-5 yrs	50%	65%	48%	1,990 persons
<b>Age 6-17 (as percentage of the population)</b>	27%	26%	26%	9,208 persons
Male 6-17 yrs	50%	48%	50%	4,635 persons
Female 6-17 yrs	50%	52%	50%	4,573 persons
<b>Age 18-60 (as percentage of the population)</b>	53%	52%	56%	19,798 persons
Male 18-60 yrs	48%	45%	49%	9,606 persons
Female 18-60 yrs	52%	55%	51%	10,192 persons
<b>Age 61 above (as percentage of the population)</b>	8%	6%	7%	2,427 persons
Male 61	34%	45%	44%	1,069 persons
Female 61	66%	55%	56%	1,358 persons

**Note:** The overall percentage for each age group is calculated on the basis of the total population. The gender distribution of each group is calculated on the basis of the population within that particular age group.

## 1.2 Occupations

### 1.2.1 Percentage of families with a particular Occupation over 3 years

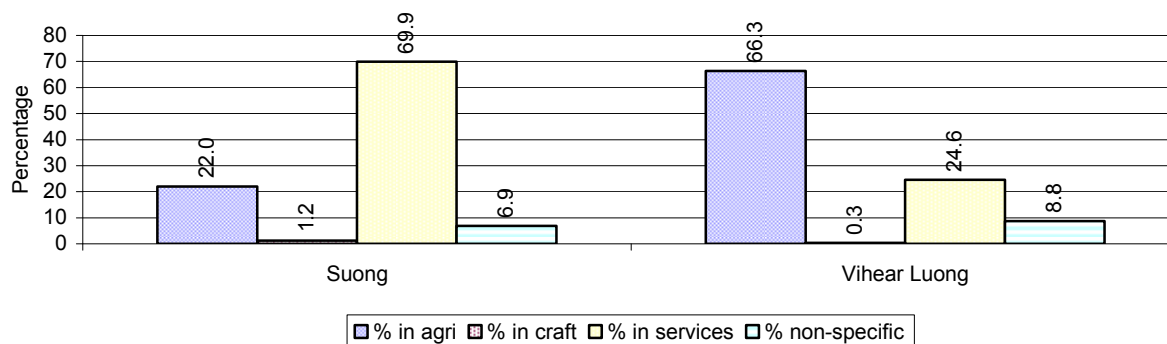
*This table shows the percentage of the population who have a particular occupation (job), for example the percentage of the population in the district who are rice farmers, furniture crafter, trader, etc.*

Description	2006	2007	2008	
	%	%	%	Number
<b>Families whose main occupation is agriculture</b>	42%	37%	39%	2,986 Families
Families whose primary occupation is rice farming	35%	30%	30%	2,335 Families
Families whose primary occupation is cultivating long-term crops	1%	2%	2%	167 Families
Families whose primary occupation is cultivating short-term crops	5%	4%	5%	369 Families
Families whose primary occupation is cultivating vegetable	1%	1%	1%	113 Families
Families whose primary occupation is fisherman	0%	0%	0%	0 Families
Families whose primary occupation is livestock farmer	0%	0%	0%	2 Families
Families whose primary occupation is NTFP collection	0%	0%	0%	0 Families
<b>Families whose main occupation is craft work</b>	1%	1%	1%	68 Families
Families, whose main occupation is in furniture craft, wooden, rattan, vine, bamboo	0%	0%	0%	12 Families
Families whose main occupation is in metal, aluminum, glass goods production	0%	0%	0%	22 Families
Families whose main occupation is food production	0%	0%	0%	8 Families
Families whose main occupation is tire, plastics and rubber goods production	0%	0%	0%	0 Families
Families whose main occupation is textile, clothing goods production	0%	0%	0%	0 Families
Families whose main occupation is in other production, not listed above	0%	0%	0%	26 Families
<b>Families whose main occupation is services</b>	33%	47%	53%	4,062 Families
Families whose main occupation is trade	17%	20%	27%	2,084 Families
Families whose main occupation is repair	1%	1%	2%	139 Families
Families whose main occupation is providing transport services	2%	2%	4%	307 Families
Families whose main occupation is providing other services	12%	23%	20%	1,532 Families
Families whose main occupation is not clear (or multi)	24%	16%	8%	586 Families

**Note:** The occupation percentages are calculated on the basis of the total number of families.

### 1.2.2 Percentage Families that work in one of four occupational sectors, by Commune in 2008

This table indicates the percentage of families involved in one of four occupation types: agriculture, craft, services or non-specific (other). Please note agriculture includes forestry activities such as cutting down trees and gathering gum from the trees.



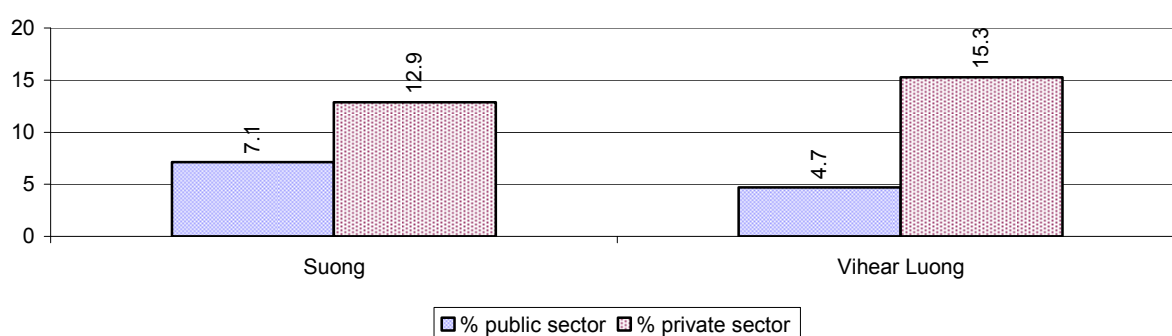
**Note:** Calculated on the basis of the total number of families within a commune.

### 1.2.3 Percentage of Families with public Sector, private Sector or uncertain Jobs, over 3 years

Description	2006	2007	2008	
	%	%	%	Number
Families that have a family member who is a government official, staff or worker	7%	6%	6%	479 families
Families that have a family member who is a private sector staff or worker	18%	16%	14%	1,062 families
Number of people aged 18-60 with uncertain/irregular jobs	4%	4%	4%	886 persons

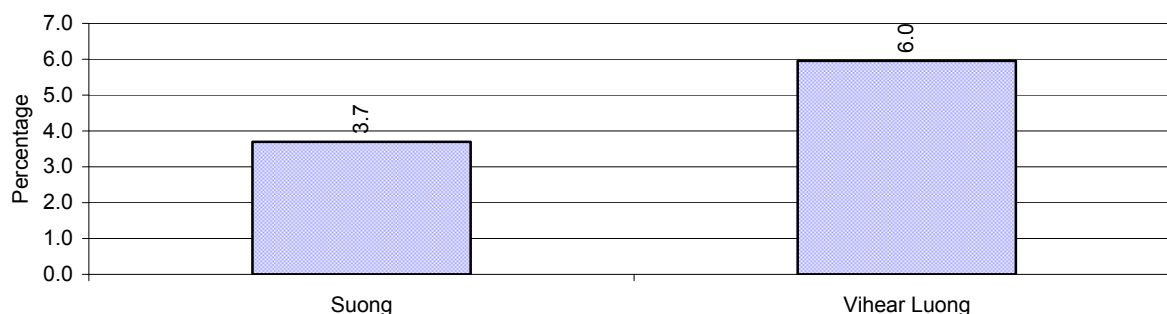
**Note:** In the first two rows percentages are calculated on the basis of the total number of families. In the third row the percentage is calculated on the basis of the total number of people aged 18-60 years.

### 1.2.4 Percentage of Families with public or private Sector Jobs, by Commune in 2008



**Note:** Calculated on the basis of the total number of families in the commune

### 1.2.5 Percentage of People aged 18-60 years with uncertain/irregular Jobs, by Commune, in 2008.



## 1.3 Property

### 1.3.1 Housing types and facilities over 3 years

This table shows the percentage of people living in a certain type of house. It also indicates how many houses have electricity or battery powered lights and how many have TV.

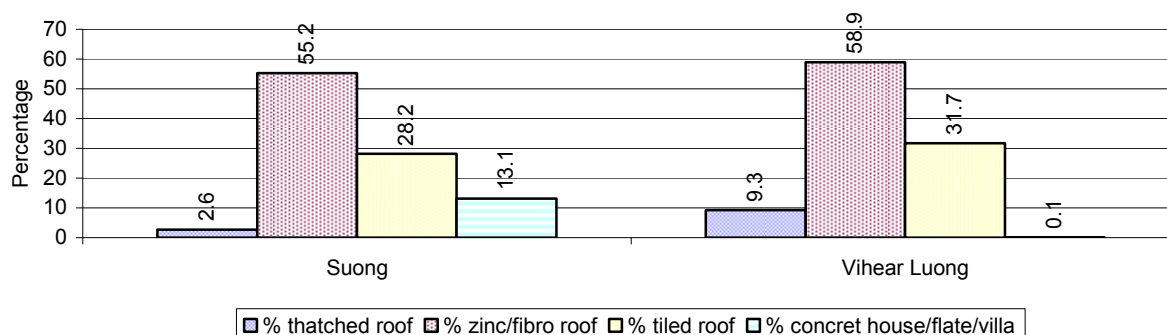
House Type	2006	2007	2008	
	%	%	%	Number
House with thatched roof	9 %	7 %	5 %	366 houses
House with zinc/fibro roof	49 %	56 %	57 %	4,029 houses
House with tiled roof	29 %	28 %	30 %	2,100 houses
Flats/apartments (with many families living)	2 %	1 %	2 %	107 houses
Concrete house or flat (with one family living)	12 %	7 %	7 %	498 houses
Villa house	0 %	0 %	0 %	16 houses
Houses with electricity	55 %	64 %	69 %	4,930 houses
Houses with battery light	31 %	26 %	23 %	1,607 houses
Houses with TV	67 %	74 %	77 %	5,461 houses

**Note:** Calculated against the total number of houses

### 1.3.2 Families living on public Land or without a permanent House

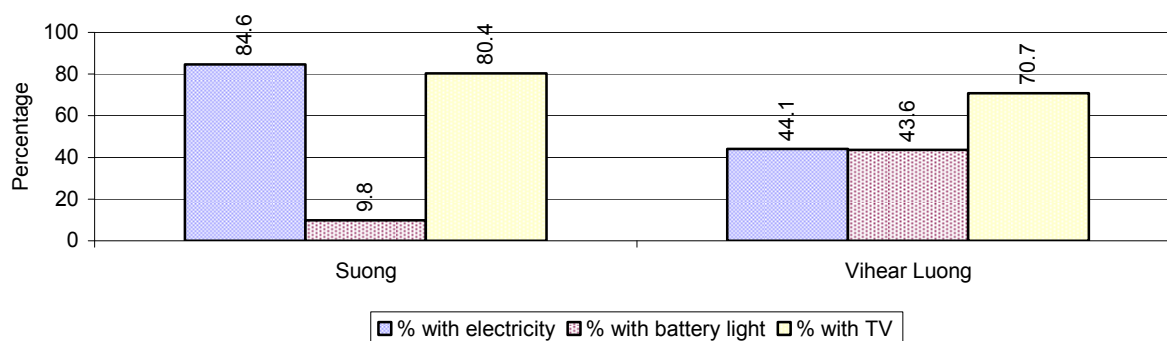
Living situation	2006	2007	2008
Families living in a house on public land	50 families	50 families	74 families
People, without permanent housing	9 person(s)	0 person(s)	7 person(s)

### 1.3.3 Percentage of Population living in a particular type of House, by Commune, in 2008



**Note:** Calculated against the total number of houses in each commune

### 1.3.4 Percentage of Houses with Electricity, Battery Lights and/or TVs, by Commune, in 2008



**Note:** Calculated against the total number of houses in each commune

### 1.3.5 Types of Vehicles and their ratio to Families across 3 years

This table shows the number of families per vehicle in the district. The last column shows the total number of each type of vehicle in the district for 2008.

Description	2006 ratio	2007 ratio	2008	
			Ratio	Number
Bicycle and bicycle with trailer	1	1	1	6,780
Ox-carts and horse-carts	16	17	21	370
Motorbike/with trailer	2	2	2	4,306
Motor tri-cycle	3,645	7,472	3,851	2
Large Transportation				
<b>Total number of cars/trucks</b>	21	21	17	445
Locally made vehicles	170	159	140	55
Trucks for goods transport	39	41	36	215
Buses/mini buses for passengers	280	311	227	34
Family cars	73	71	55	141
Agriculture machinery				
Tractors used for plowing	729	623	592	13
Power-tillage used for plowing	56	48	49	156
Other type of machinery				
Other type of machinery	39	42	62	124
Water transportation				
Row boats	911	623	770	10
<b>Total number of motor boats</b>	N/A	N/A	N/A	0
Motor boats used for fishing	N/A	N/A	N/A	0
Motor boats used for passengers	N/A	N/A	N/A	0
Motor boats used for goods transporting	N/A	N/A	N/A	0

**Note:** Ratio of families to a particular type of vehicle is the result of the total number of families divided by total number of that type of vehicle. Other types of vehicles, such as bulldozer, excavator, rollers etc. are not listed.

## 2 Infrastructure and Economy

### 2.1 Roads in meters over 3 years

Description	2006	2007	2008
Bituminous road	0 m	0 m	0 m
DBST, Macadam road	5,400 m	5,000 m	13,000 m
Concrete road	0 m	0 m	0 m
Laterite road	28,200 m	22,100 m	40,920 m
Constructed earth road	9,520 m	3,431 m	7,881 m
Un-constructed earth road	15,900 m	9,500 m	19,570 m

### 2.2 Sewerage Pipes in meters over 3 years

Description	Sewage pipe length		
	2006	2007	2008
Total length of sewage pipe, diameter 30-50 cm	88 m	171 m	118 m
Length of newly constructed sewage pipe, diameter 30-50 cm	0 m	258 m	0 m
Length of sewage pipe, diameter 30-50 cm needs repair/rehabilitation	13 m	134 m	118 m
Total length of sewage pipe, diameter of pipe 60-100 cm	92 m	100 m	458 m
Length of newly constructed sewage pipe, diameter 60-100 cm	18 m	52 m	12 m
Length of sewage pipe, diameter 60-100 cm needs repair/rehabilitation	66 m	60 m	458 m
Sewage pipe, diameter of pipe over 100 cm	30 m	30 m	30 m
Length of newly constructed sewage pipe, diameter over 100 cm	0 m	0 m	0 m
Length of sewage pipe, diameter over 100 cm needs repair/rehabilitation	0 m	0 m	0 m

### 2.3 Drainage and Bridges

Construction Type	2006		2007		2008	
	place(s)	Length	place(s)	Length	place(s)	Length
Single pipe culvert	1	6m	0	0 m	0	0 m
Double-pipe culvert	0	0m	0	0 m	0	0 m
Box pipe culvert	0	0m	0	0m	0	0 m
Wooden bridge	0	0m	0	0m	0	0 m
Concrete bridge	0	0m	0	0m	0	0 m
Bale bridge	0	0m	0	0m	0	0 m
Spillway construction	0	0m	0	0m	0	0 m

### 2.4 Services in the District

Descriptions	Number of places by year		
	2006	2007	2008
<b>Public</b>			
Electricity generating stations	1	1	0
Health clinics	2	6	11
<b>Private</b>			
Bicycle and motorcycle repair places	52	42	55
Agricultural machinery, tools and equipment repair places	18	11	42
Electronic tool repair places	5	10	18
Battery-charging services	10	13	10
Handicraft places, wooden furniture and forest by-products	7	9	9
Other handicraft places (excluding furniture)	56	37	41
Small-scale services (hairstylist, phone service, massage,	35	44	35



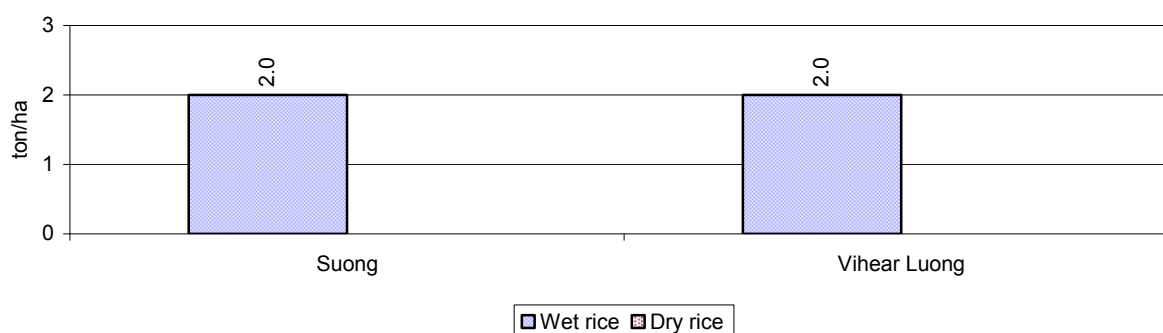
Descriptions	Number of places by year		
	2006	2007	2008
Karaoke, etc)			
Small-scale food shop businesses (Food, groceries, drink shop, etc)	229	58	317
Small-scale rice mills	85	92	84
Medium or large-scale rice mills	3	3	2
Small-scale markets	0	0	0
Large-scale market	1	1	1
Alcohol refinery places	10	29	16
Pharmacies and small drug stores	16	16	16
Hotels	1	0	0
Guest houses	6	8	8
Restaurants	2	3	4
Gasoline stations	6	5	6

## 2.5 Agriculture

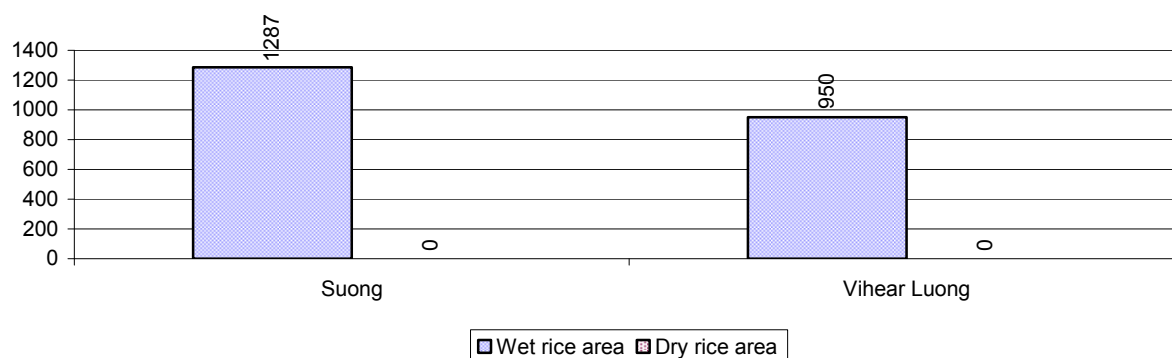
### 2.5.1 Rice cultivation in the District over 3 years

Description	2006	2007	2008
Total dry rice land area	0 ha	0 ha	0 ha
Actual dry rice cultivation area	0 ha	0 ha	0 ha
% actual cultivation to total land	-%	-%	-%
Total dry rice production	- tonne(s)	- tonne(s)	- tonne(s)
Average dry rice yield	- tonne(s)/ha	- tonne(s)/ha	- tonne(s)/ha
Total wet rice land area	2,311 ha	2,150 ha	2,311 ha
Actual wet rice cultivation area	2,256 ha	2,150 ha	2,237 ha
% actual cultivation to total land	98 %	100%	97%
Total wet rice production	4,512.00 tonne(s)	4,837.50 tonne(s)	4,474.00 tonne(s)
Average wet rice yield	2.0 tonne(s)/ha	2.3 tonne(s)/ha	2.0 tonne(s)/ha
Total intensive rice land area	106 ha	250 ha	38 ha
Actual intensive rice cultivation area	196 ha	500 ha	- ha
Average intensive rice yield	1.9 tonne(s)/ha	2.0 tonne(s)/ha	- tonne(s)/ha
Actual upland rice cultivation area	0 ha	0 ha	0 ha
Total upland rice production	- tonne(s)	- tonne(s)	- tonne(s)
Average upland rice yield	- tonne(s)/ha	- tonne(s)/ha	- tonne(s)/ha

### 2.5.2 Estimated wet and dry Season Rice Yield in tonne(s)/Ha, by Commune, in 2008



### 2.5.3 Cultivated wet and dry Season Rice areas in Ha, by Commune, in 2008



### 2.5.4 Estimated intensive Rice Yields in tonnes/Ha, by Commune, for 2008

There were no estimated intensive rice yields in this District in 2008

### 2.5.5 Estimated upland Rice Yield in tonnes/Ha, by Commune, for 2008

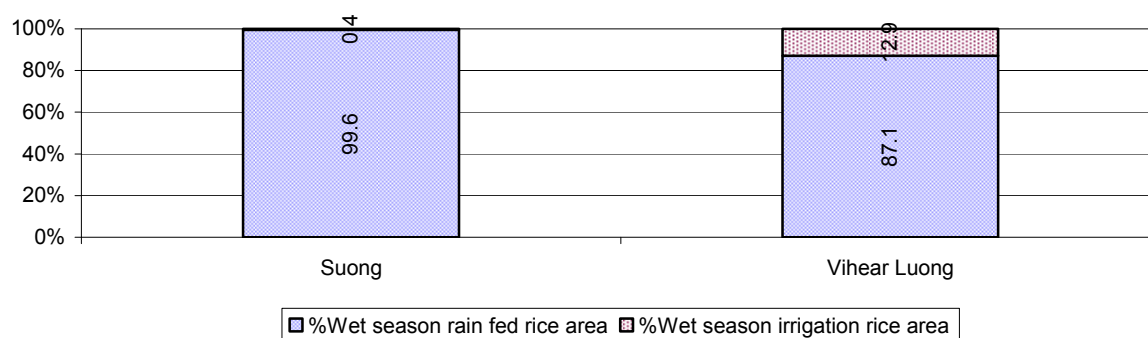
There were no estimated upland rice yields in this District in 2008

### 2.5.6 Wet season Rice irrigation across 3 years

Description		2006	2007	2008	
		%	%	%	Number
Total area of wet season rain fed rice land		89%	100%	94 %	2,109 ha
Percentage of wet season rice land that is irrigated; and for 2008 area in Ha		11 %	0 %	6 %	128 ha
Where	Area irrigated from canal/dam	29 %	- %	96 %	123 ha
	Area irrigated from river, stream, lake, natural pond	29 %	- %	0 %	0 ha
	Area irrigated from drilled well	0 %	- %	2 %	3 ha
	Area irrigated from dug pond	43 %	- %	2 %	2 ha

### 2.5.7 Water sources for wet Season Rice Cultivation, by Commune, in 2008

This chart shows the percentage of wet season rice cultivation receiving water from rain (natural) and from irrigation.



### 2.5.8 Access to Irrigation

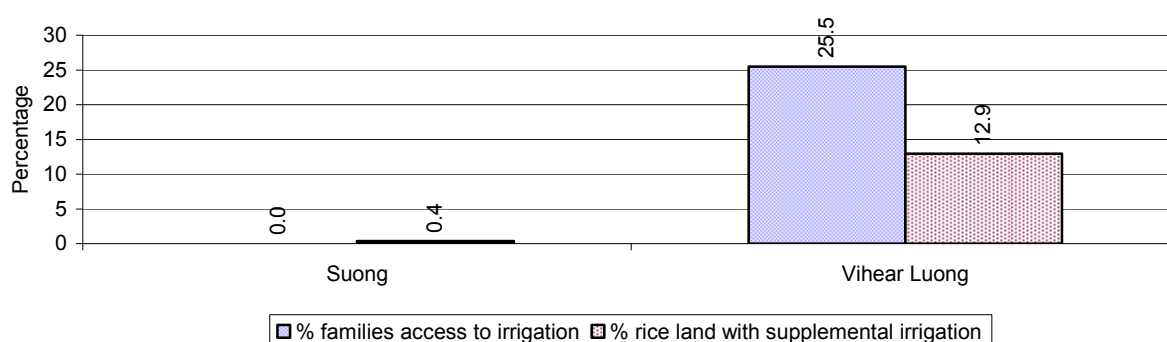
Description	2006 %	2007 %	2008	
			%	Number
Families who have access to irrigation water	15%	17%	16%	373 families
Families who have irrigation wells	1%	2%	3%	61 families

**Note:** Calculated against the total number of families are rice farmers

### 2.5.9 Number of Irrigation Wells over 3 years

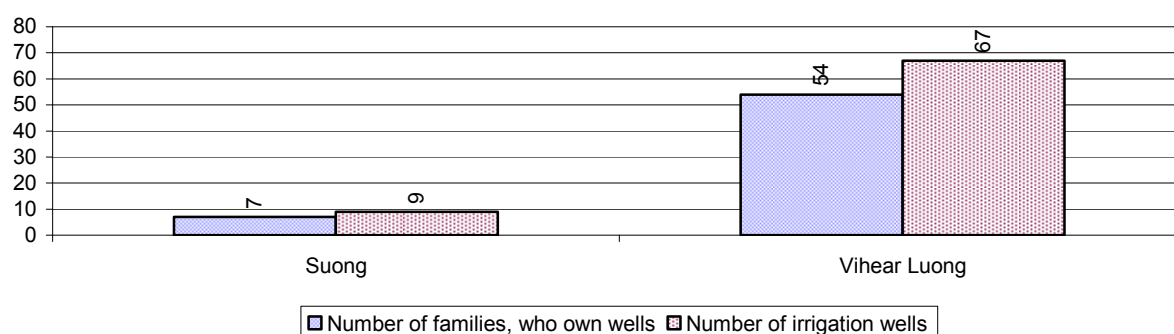
Description	2006	2007	2008
Number of irrigation wells	24 wells	53 wells	76 wells

### 2.5.10 Percentage of Families with access to (supplemental) Irrigation for wet Season Rice cultivation, by Commune, in 2008



**Note:** % of families, with access to irrigation is calculated against the total number of families, whose main occupation is rice farming. Irrigated wet rice land area is calculated against the total actual wet rice land cultivated areas

### 2.5.11 Irrigation Wells, by Commune, in 2008

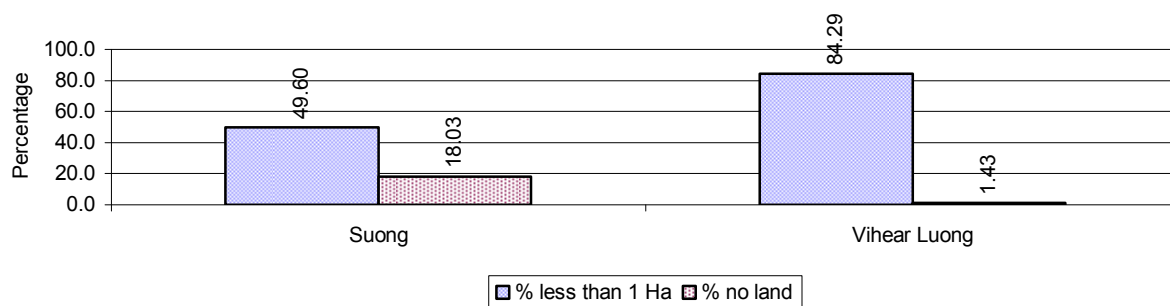


### 2.5.12 Farmers owning less than one hectare of Rice Land

Description	2006 %	2007 %	2008	
			%	Number
Families who have less than one hectare of rice land	67%	78%	71%	1,666 families
Families who do not own any rice land	5%	2%	8%	178 families

**Note:** Calculated on basis of total number of families who are rice farming

### 2.5.13 Percentage of Farmers with less than one Hectare or no Rice Land, by Commune, in 2008

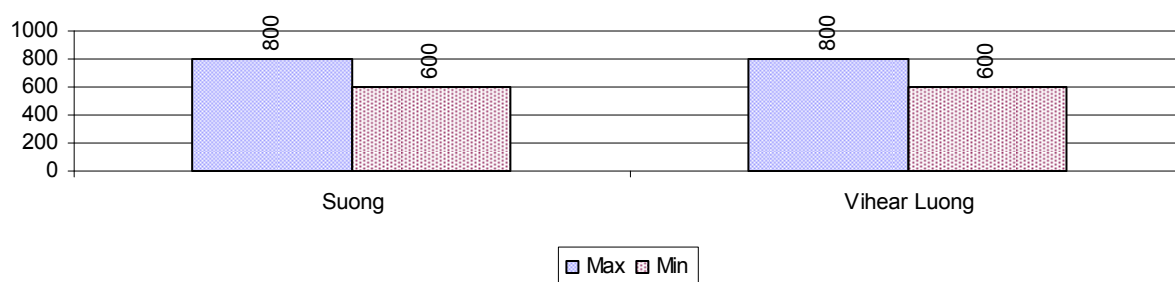


**Note:** Calculated on basis of total number of families who are rice farming

### 2.5.14 Average farm-gate Prices of Rice, over 3 years

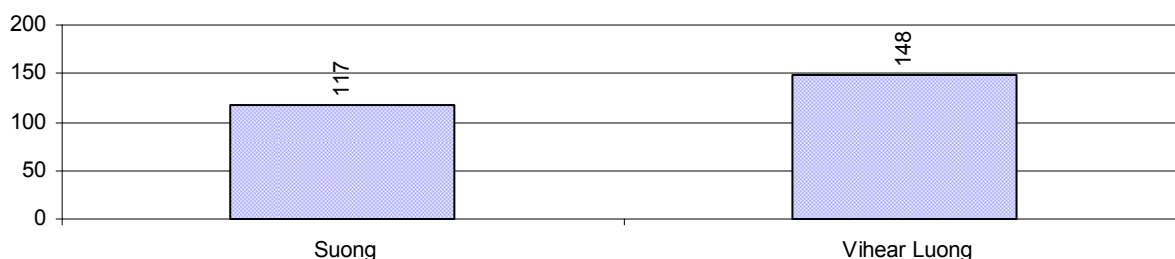
Description	2006	2007	2008
Maximum average farm gate price	590 Riels/Kg	814 Riels/Kg	800 Riels/Kg
Minimum average farm gate price	494 Riels/Kg	600 Riels/Kg	600 Riels/Kg
Average farm gate price	542 Riels/Kg	707 Riels/Kg	700 Riels/Kg
Average rice production per person	132 Kg/person	141 Kg/person	128 Kg/person

### 2.5.15 Minimum and maximum farm-gate Prices of Rice in Riel/kg, by Commune, in 2008



### 2.5.16 Production of Paddy in Kgs/Person, by Commune, in 2008

This table shows how much paddy (harvested rice) is produced in a year in a commune, in kgs per person.



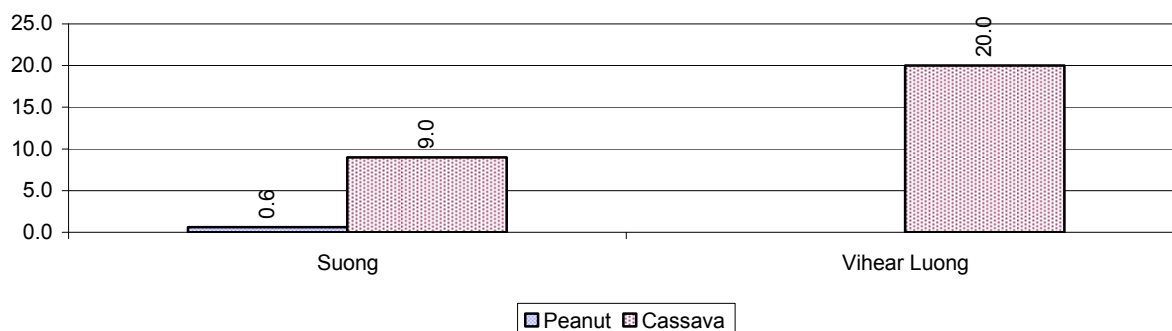
### 2.5.17 Production of other Crops, over 3 years

Crops	2006	2007	2008
Corn cultivation area	0 ha	0 ha	0 ha
Estimated corn yield	- tonne(s)/ha	- tonne(s)/ha	- tonne(s)/ha
Estimated corn production	- tonne(s)	- tonne(s)	- tonne(s)
Soya bean cultivation area	0 ha	0 ha	0 ha
Estimated Soya bean yield	- tonne(s)/ha	- tonne(s)/ha	- tonne(s)/ha
Estimated Soya bean production	- tonne(s)	- tonne(s)	- tonne(s)
Mungbean cultivation area	7 ha	0 ha	0 ha
Estimated Mungbean yield	0.8 tonne(s)/ha	- tonne(s)/ha	- tonne(s)/ha
Estimated Mungbean production	6 tonne(s)	- tonne(s)	- tonne(s)
Peanut cultivation area	72 ha	15 ha	4 ha
Estimated Peanut yield	0.6 tonne(s)/ha	2.0 tonne(s)/ha	0.6 tonne(s)/ha
Estimated Peanut production	43 tonne(s)	30 tonne(s)	2 tonne(s)
Cassava cultivation area	464 ha	288 ha	303 ha
Estimated Cassava yield	12.0 tonne(s)/ha	19.0 tonne(s)/ha	14.5 tonne(s)/ha
Estimated Cassava production	5,568 tonne(s)	5,472 tonne(s)	4,394 tonne(s)
Sweet potatoes cultivation area	0 ha	0 ha	0 ha
Estimated Sweet potatoes yield	- tonne(s)/ha	- tonne(s)/ha	- tonne(s)/ha
Estimated Sweet potatoes production	- tonne(s)	- tonne(s)	- tonne(s)
Sesame cultivation area	0 ha	0 ha	0 ha
Estimated Sesame yield	- tonne(s)/ha	- tonne(s)/ha	- tonne(s)/ha
Estimated Sesame production	- tonne(s)	- tonne(s)	- tonne(s)

### 2.5.18 Yields of Corn, Soya beans and Mungbeans in tonne(s)/ha, by Commune, in 2008

There were no yields for any of these crops in this District in 2008

### 2.5.19 Yields of Peanuts and Cassava in tonne(s)/ha by Commune, in 2008



### 2.5.20 Yields of Sweet Potatoes and Sesame in tonne(s)/ha, by Commune, in 2008

There were no yields for any of these crops in this District in 2008

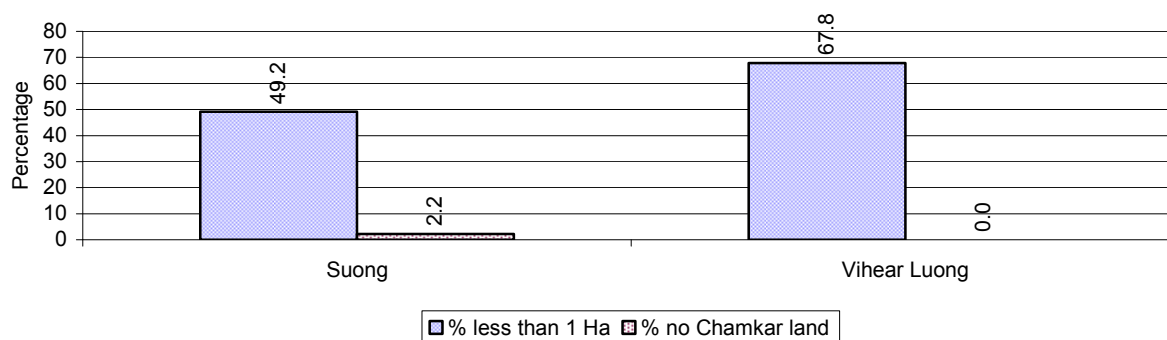
### 2.5.21 Percentage Farmers who own less than 1 Ha or no Chamkar land

Description	2006 %	2007 %	2008	
			%	Number
Families, who own less than 1ha of Chamkar land	52%	60%	63%	406 families
Families, with no Chamkar land	4%	2%	1%	4 families

**Note 1:** Calculated as a percentage of the total number of families whose main occupation is Chamkar (not rice) farming

**Note 2:** Chamkar land is no-rice land, i.e. other crops

### 2.5.22 Percentage Farmers owning less than 1 ha or no Chamkar land, by Commune, in 2008



**Note:** Percentage is calculated among families, who Chamkar farm as a main occupation, not the total population of the commune.

### 2.5.23 Percentage of Families raising Cattle/Buffalo, over 3 years

Description	2006 %	2007 %	2008	
			%	Number
Families raising cattle/buffalo	18%	16%	13%	1,017 families
Families raising cattle/buffalo as labor forces	5%	4%	3%	250 families

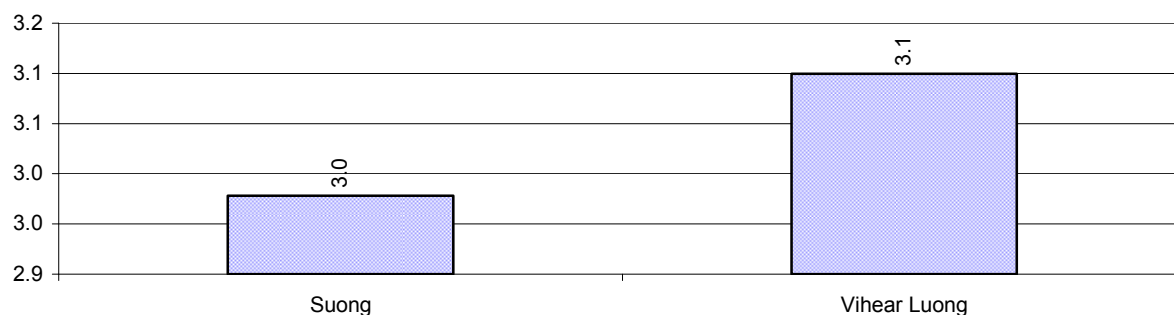
**Note:** Calculated against the total number of families.

### 2.5.24 Number of Cattle/buffalo being raised, over 3 years

Description	2006	2007	2008
Total number of cattle/buffalo	4,033 head(s)	3,861 head(s)	3,108 head(s)
Average cattle/buffalo per families	3.1 head(s)/families	3.2 head(s)/families	3 head(s)/families

**Note:** Calculated by dividing total number of cattle/buffalo by total number of cattle/buffalo raising families

### 2.5.25 Average number of Cattle/Buffalo per Family, by Commune, in 2008



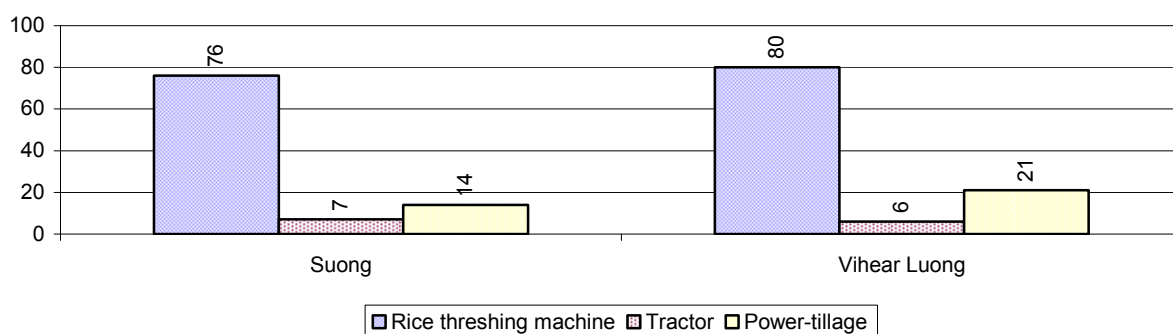
**Note:** Calculated by dividing total number of cattle/buffalo by total number of cattle/buffalo raising families

### 2.5.26 Percentage Families raising Cattle/Buffalo, for general and labor purposes in 2008, by Commune



**Note:** Calculated using the total number of families raising cattle/buffalo against the total number of families.

### 2.5.27 Type and number of agricultural Machines, by Commune, in 2008

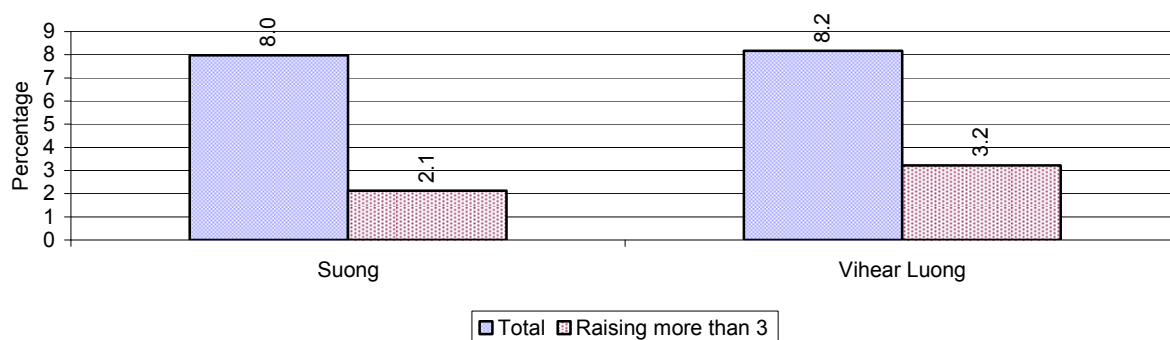


### 2.5.28 Livestock-producing Households over 3 years

Description	2006 %	2007 %	2008	
			%	Number
Total number of families raising pigs	15%	10%	8%	620 families
number of families raising more than 3 pigs	4%	4%	3%	196 families
Total number of families raising chickens	62%	57%	63%	4,846 families
number of families raising more than 3 chickens	46%	45%	49%	3,791 families
Total number of families raising ducks	3%	5%	4%	289 families
number of families raising more than 5 ducks	2%	2%	2%	183 families
Total number of families raising goats or sheep	0%	0%	0%	7 families
Total number of families raising horses	2%	2%	2%	166 families

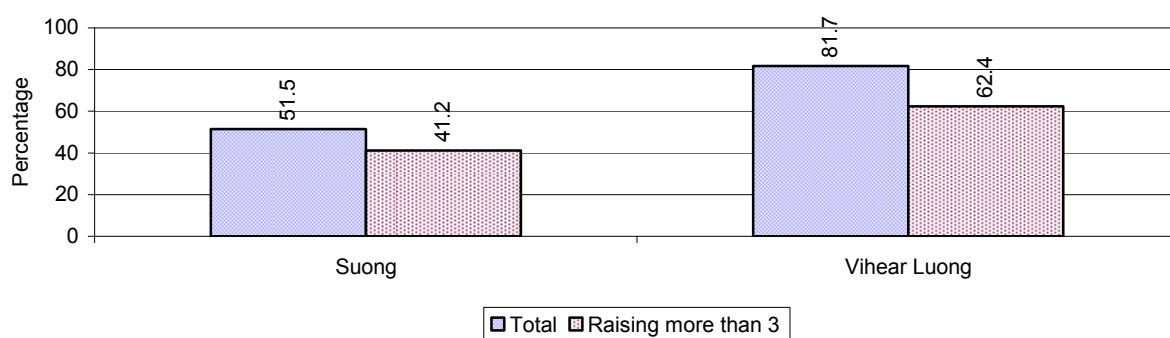
**Note:** Calculated against the total number of families

### 2.5.29 Percentage Families raising Pigs, by Commune, in 2008



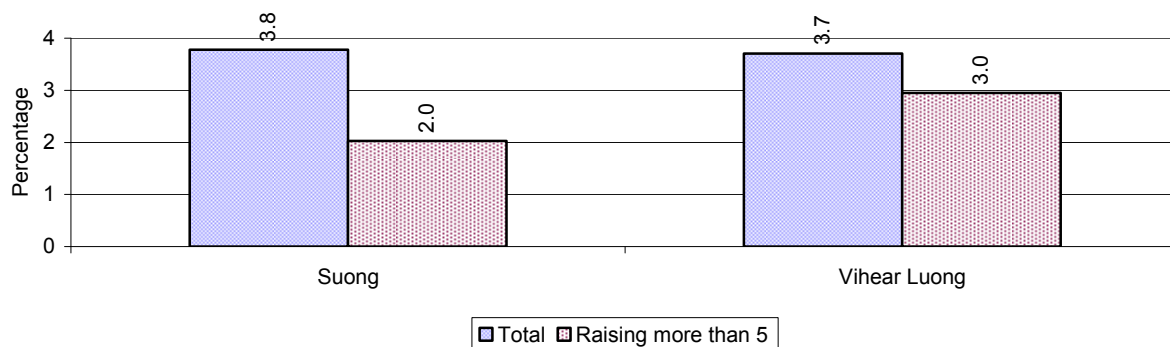
**Note:** Calculated against the total number of families in the commune

### 2.5.30 Percentage Families raising Chickens, by Commune, in 2008



**Note:** Calculated against the total number of families in the commune

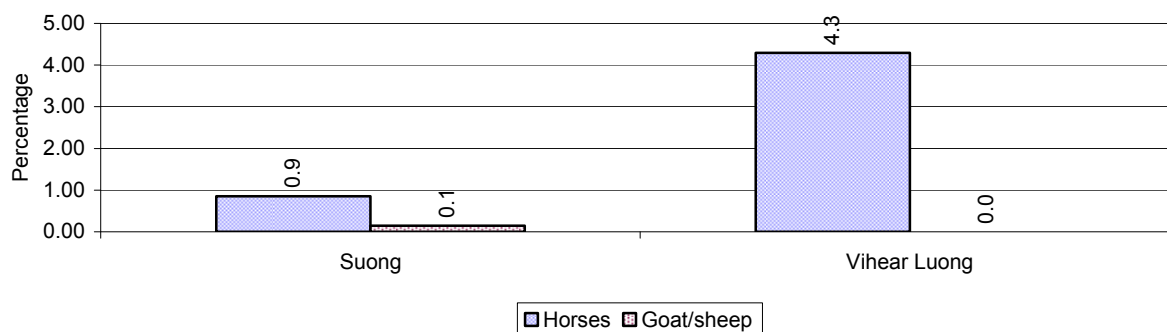
### 2.5.31 Percentage Families raising Ducks, by Commune, in 2008



**Note:** Calculated against the total number of families in the commune



### 2.5.32 Percentage Families raising Horses, Goats or Sheep, by Commune, in 2008



**Note:** Calculated against the total number of families in the commune

### 2.5.33 Livestock Farms over 3 years

Description	2006	2007	2008
Number of cattle/buffalo farms	0 farm(s)	0 farm(s)	0 farm(s)
Number of pig farms	0 farm(s)	2 farm(s)	0 farm(s)
Number of goat/sheep farms	0 farm(s)	1 farm(s)	0 farm(s)
Number of chicken farms	0 farm(s)	0 farm(s)	0 farm(s)
Number of duck farms	0 farm(s)	0 farm(s)	1 farm(s)

### 2.5.34 Number Livestock Farms, by Commune in 2008

There were no farms of this type in this District in 2008

**Note:** Number of farms are recorded by the village chief, not by counting number of livestock in each farm

### 2.5.35 Number Chicken and Duck Farms, by Commune, for 2008



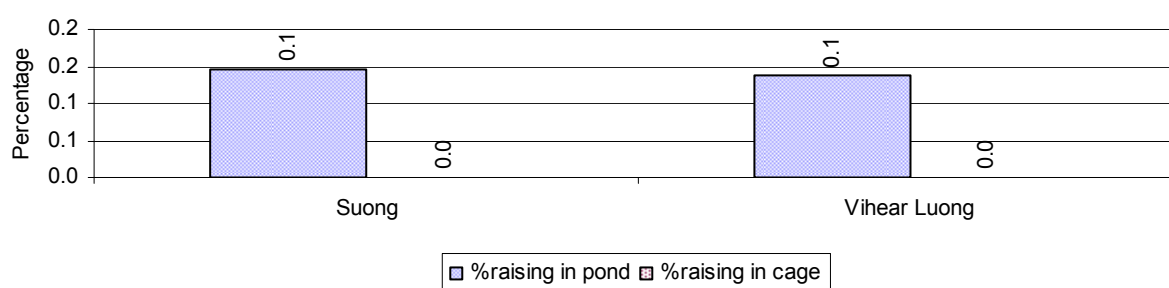
**Note:** Number of farm places recorded by village chief, not by counting number of livestock in each farm

### 2.5.36 Families raising Fish over 3 years

Description	2006	2007	2008
Total number of families raising fish	15 families	17 families	11 families
% families raising fish	0%	0%	0%
Number families raising fish in pond	15 families	17 families	11 families
% families raising fish in pond	0%	0%	0%
Number fish pond	15 pond(s)	16 pond(s)	11 pond(s)
No. of ponds per family	1.0 pond/families	0.9 pond/families	1.0 pond/families
Number of families raising fish in cage	0 families	0 families	0 families
%families raising fish in cage	0%	0%	0%
Number of fish cage	0 cage(s)	0 cage(s)	0 cage(s)
No. of fish cage per family	- cage /families	- cage /families	- cage /families

**Note:** % of families raising fish or fish in ponds or cages is calculated as a percentage of the total number of families.

### 2.5.37 Percentage of Families raising Fish, by Commune, in 2008



**Note:** Calculated as a percentage of the total number of families in the commune.

### 2.5.38 Shrimp and Prawn Farming over 3 years

Description	2006	2007	2008
Number of families raising shrimps	0 families	0 families	0 families
% Families raising shrimps	0%	0%	0%
Number of shrimp ponds	0 pond	0 pond	0 pond
Total area raising shrimps	0 ha	0 ha	0 ha
Area per family	-ha/families	-ha/families	-ha/families
Number of families raising prawns	0 families	0 families	0 families
% families raising prawns	0%	0%	0%
Number prawn ponds	0 pond	0 pond	0 pond
Ponds per families	- pond/families	-pond/families	-pond/families
Number of prawn cages	0 cage	0 cage	0 cage
Cages per families	0 cage /families	0 cage /families	0 cage /families

**Note:** Percentage of families raising either prawns or shrimp is calculated against the number of families, who do aquaculture farming, NOT the total population.

### 2.5.39 Numbers of Families raising Shrimps and number of Shrimp Ponds, by Commune, in 2008

There were none of these in this District in 2008

### 2.5.40 Number of Families raising Prawn and Number of Prawn Ponds/Cages, by Commune, in 2008

There were none of these in this District in 2008

### 3 Social Aspects

#### 3.1 Education

##### 3.1.1 Kindergarten in the District over 3 years

Description	2006	2007	2008
Number of community kindergarten schools	0 school(s)	0 school(s)	0 school(s)
Number of community kindergarten class rooms	0 room(s)	0 room(s)	0 room(s)
Number of community kindergarten classes	0 class(es)	0 class(es)	0 class(es)
Number of community kindergarten teachers	0 person(s)	0 person(s)	0 person(s)
Number of women community kindergarten teachers	0 women	0 women	0 women
Number of state and private kindergarten schools	1 school(s)	3 school(s)	2 school(s)
Number of state and private kindergarten class rooms	5 room(s)	5 room(s)	4 room(s)
Number of state and private kindergarten classes	8 class(es)	8 class(es)	4 class(es)
Number of state and private kindergarten teachers	5 person(s)	5 person(s)	6 person(s)
Number of women state and private kindergarten teachers	5 women	5 women	6 women

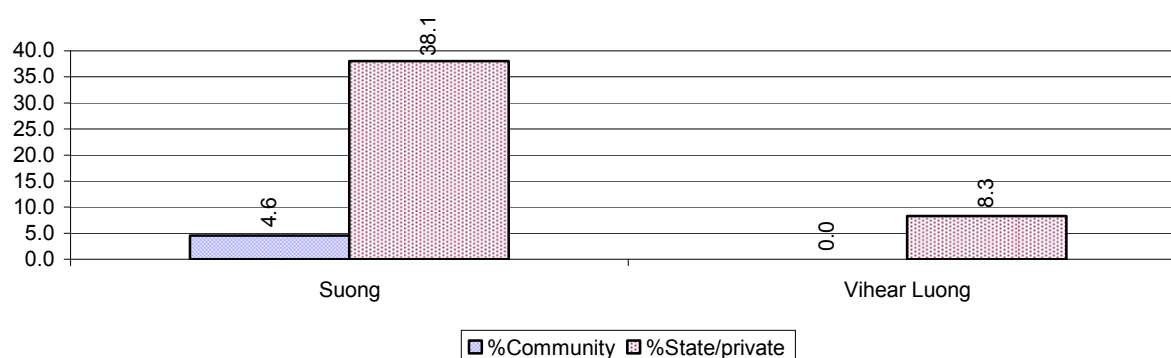
##### 3.1.2 Percentage enrolment at Kindergarten level over 3 years

*This table shows the percentage of the total 3-5 year old population attending kindergarten.*

Description	2006 %	2007 %	2008	
			%	Number
Total percentage of children, 3-5 yrs, go to kindergarten	28%	16%	30%	710 person(s)
Percentage of children, 3-5 yrs, go community kindergarten	3%	2%	3%	68 person(s)
Percentage children, 3-5 yrs, go state/private kindergarten	24%	14%	27%	642 person(s)

**Note:** Calculated against the total for that age group

##### 3.1.3 Percentage of Children 3-5 yrs attending Kindergarten, by Commune, in 2008



##### 3.1.4 Basic Education over 3 years

###### Primary School

Description	2006	2007	2008
Number of primary schools	12 school(s)	12 school(s)	12 school(s)
Number of primary school rooms	135 room(s)	135 room(s)	131 room(s)
Number of primary classes	146 class(es)	146 class(es)	153 class(es)
Number of primary teachers	144 person(s)	147 person(s)	172 person(s)

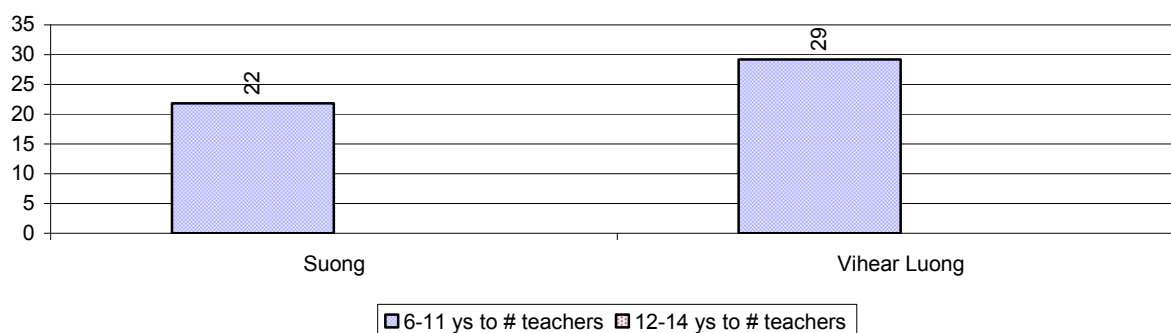
Description	2006	2007	2008
Ratio of children 6-11 yrs to school	377	397	349
Ratio of children 6-11 yrs to school room	34	35	32
Ratio of children 6-11 yrs to class	31	33	27
Ratio of children 6-11 yrs to teacher	31	32	24

**Note:** According to education norm, children 6-11 yrs should attend primary school, while 12-14 yrs should be in lower secondary school, but in reality this varies.

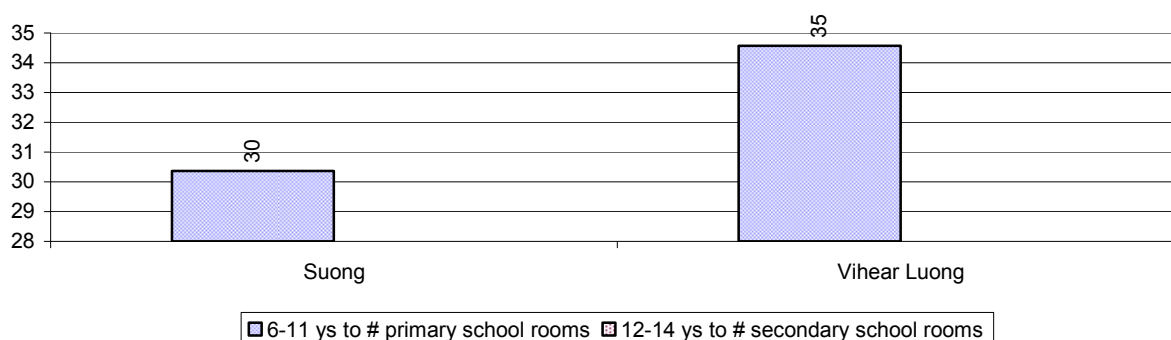
### Lower Secondary School

Description	2006	2007	2008
Number of lower secondary schools	0 school(s)	0 school(s)	0 school(s)
Number of lower secondary school rooms	0 room(s)	0 room(s)	0 room(s)
Number of lower secondary classes	0 class(es)	0 class(es)	0 class(es)
Number of lower secondary teachers	0 person(s)	0 person(s)	0 person(s)
Ratio children 12-14 yrs to school	N/A	N/A	N/A
Ratio of children 12-14 yrs to school room	N/A	N/A	N/A
Ratio of children 12-14 yrs to class	N/A	N/A	N/A
Ratio of children 12-14 yrs to teacher	N/A	N/A	N/A

### 3.1.5 Ratio of 6-11 year old and 12-14 year old Children to number of Teachers, by Commune, in 2008



### 3.1.6 Ratio of 6-11 year old and 12-14 year old Children to number of School Rooms, by Commune, in 2008



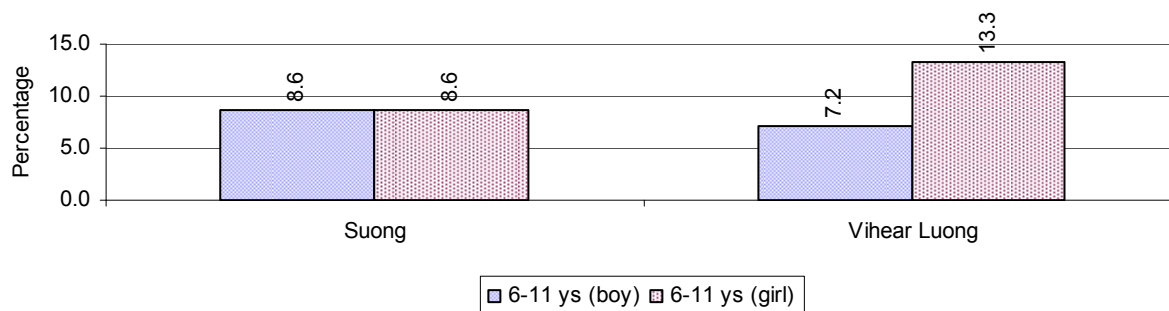
### 3.1.7 Enrolment status at Primary Level over 3 years

Description	2006 %	2007 %	2008	
			%	Number
Total children aged 6-11 years old	13%	13%	12%	4,184 person(s)
Total children aged 6-11 who are in school	87%	78%	91%	3,795 person(s)
Total children aged 6-11 who are not in school	13%	22%	9%	389 person(s)
Total girls aged 6-11 years old	12%	13%	12%	2,098 person(s)
Total girls aged 6-11 who are in school	88%	72%	89%	1,877 person(s)
Total girls aged 6-11 who are not in school	12%	28%	11%	221 person(s)
Total boys aged 6-11 years old	13%	13%	12%	2,086 person(s)
Total boys aged 6-11 who are in school	87%	86%	92%	1,918 person(s)
Total boys aged 6-11 who are not in school	13%	14%	8%	168 person(s)

**Note 1:** Percentage is calculated on the basis of the total number of children within 6-11 year age group for the first 3 rows and for the total girls and the total boys aged 6-11 yrs.

**Note 2:** Number of girls aged 6-11 who are in & not in school is calculated against the total number of girls aged 6-11 yrs. Number boys, 6-11 yrs who are in & not in school are calculated against the total number of boys aged 6-11 yrs.

### 3.1.8 Percentage of 6-11 year old Children not in School, by Commune, in 2008



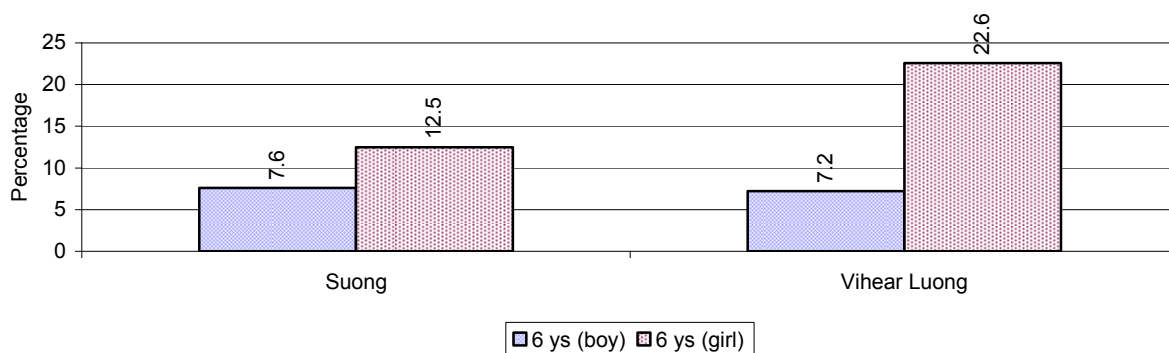
**Note:** calculated on the basis of the total number of children within 6-11 year age group in the commune.

### 3.1.9 Enrolment of 6 year old Children over 3 years

Description	2006 %	2007 %	2008	
			%	Number
Total % and number of children aged 6 years old	3%	3%	3%	987 person(s)
Total % of children aged 6 years old in school	85%	80%	89%	879 person(s)
Total % of children aged 6 years old not in school	15%	20%	11%	108 person(s)

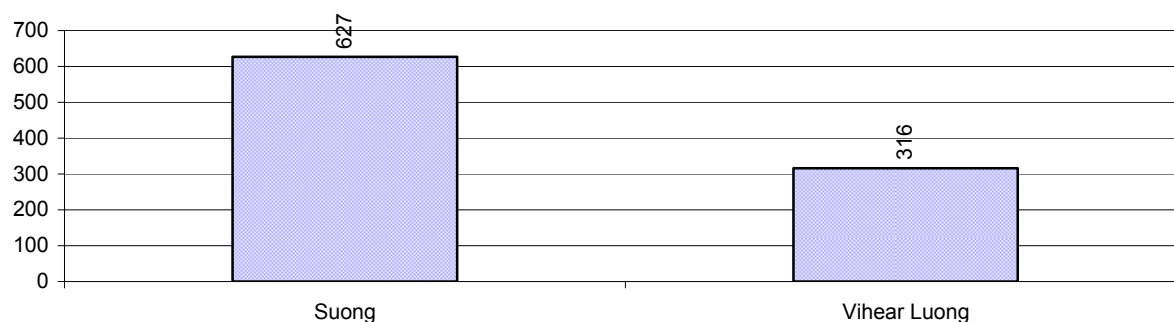
**Note:** First row calculated as a percentage of total population. Second and third row calculated as a percentage of the total number of 6 year olds.

### 3.1.10 Percentage of 6 year old Children not in School, by Commune, in 2008



**Note:** Calculated as a percentage of total 6 year old population

### 3.1.11 Number of 5 year old Children in each Commune in 2008

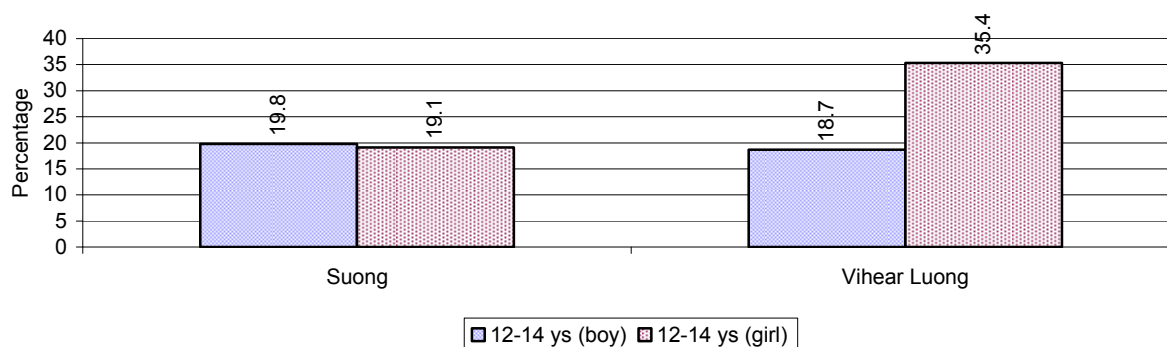


### 3.1.12 Enrolment at Lower Secondary Level over 3 years

Description	2006 %	2007 %	2008	
			%	Number
Total <b>children</b> aged 12-14 years old	7%	7%	7%	2,518 person(s)
Children aged 12-14 years old in school	74%	73%	78%	1,956 person(s)
Children aged 12-14 years old not in school	26%	27%	22%	562 person(s)
Total <b>girls</b> aged 12-14 years old	7%	6%	7%	1,253 person(s)
Girls aged 12-14 years old in school	74%	72%	75%	936 person(s)
Girls aged 12-14 years old not in school	26%	28%	25%	317 person(s)
Total <b>boys</b> aged 12-14 years old	8%	8%	7%	1,265 person(s)
Boys aged 12-14 years old in school	73%	73%	81%	1,020 person(s)
Boys aged 12-14 years old not in school	27%	27%	19%	245 person(s)

**Note:** Percentage is calculated on the basis of number of the total number of children within 12-14 yrs group, except for the first row of each section which is calculated on the basis of the total population.

### 3.1.13 Percentage of 12-14 year olds not in School, by Commune, in 2008



**Note:** Calculated as a percentage of the total 12-14 year old population in each commune

### 3.1.14 Upper Secondary Schools over 3 years

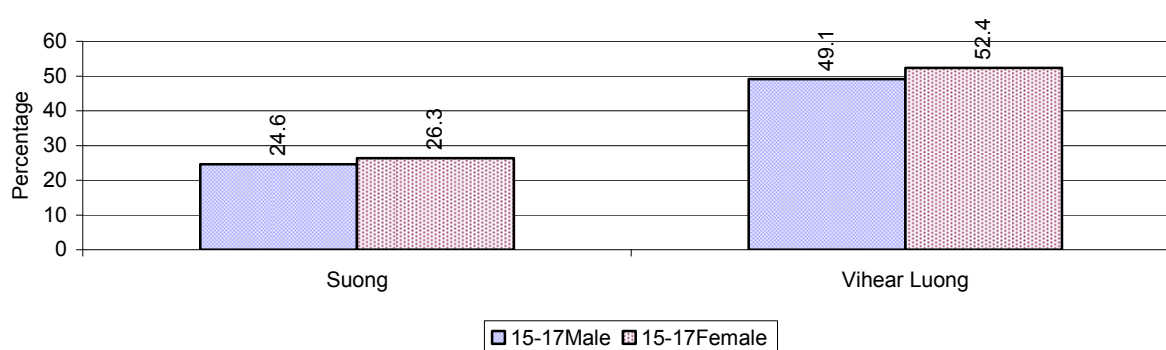
Description	2006	2007	2008
Number of upper secondary schools	1 school(s)	1 school(s)	1 school(s)
Number of upper secondary school rooms	54 room(s)	54 room(s)	54 room(s)
Number of upper secondary classes	72 class(es)	72 class(es)	70 class(es)
Number of upper secondary teachers	128 person(s)	128 person(s)	125 person(s)
Ratio of 15-17 yr olds to number of school	2,654	2,584	2,506

Description	2006	2007	2008
Ratio of 15-17 yr olds to number of school room	49	48	46
Ratio of 15-17 yr olds to number of classes	37	36	36
Ratio of 15-17 yr olds to number of teacher	21	20	20

### 3.1.15 Enrolment of 15-17 year old teenagers over 3 years

Description	2006	2007	2008
Number of teenage, 15-17 years old	2,654 person(s)	2,584 person(s)	2,506 person(s)
Number of teenage, 15-17 years old, who are not studying	984 person(s)	1,092 person(s)	872 person(s)
Percentage of teenage, 15-17 years old not studying	37%	42%	35%

### 3.1.16 Percentage of 15-17 year old Teenagers not at School, by Commune, in 2008



### 3.1.17 Literacy Classes as of 2008

Literacy classes	Organized by:		Other Program(s)	Total
	PDoEYS	NGOs		
Number of On-going literacy classes	0 class(es)	0 class(es)	0 class(es)	0 class(e(s)
Number of literacy students in on-going classes	0 person(s)	0 person(s)	0 person(s)	0 person(s)
Completed literacy class(es)	0 classes	0 classes	0 classes	0 classes
Number of literacy students that have completed literacy classes	0 person(s)	0 person(s)	0 person(s)	0 person(s)
Number of students that passed	0 person(s)	0 person(s)	0 person(s)	0 person(s)

### 3.1.18 Number of on-going and completed Literacy Classes, by Commune, in 2008

There were no classes in this District in 2008

### 3.1.19 Students of on-going & completed Literacy Classes, by Commune, in 2008

There were no students who had taken or were taking literacy classes in this District in 2008

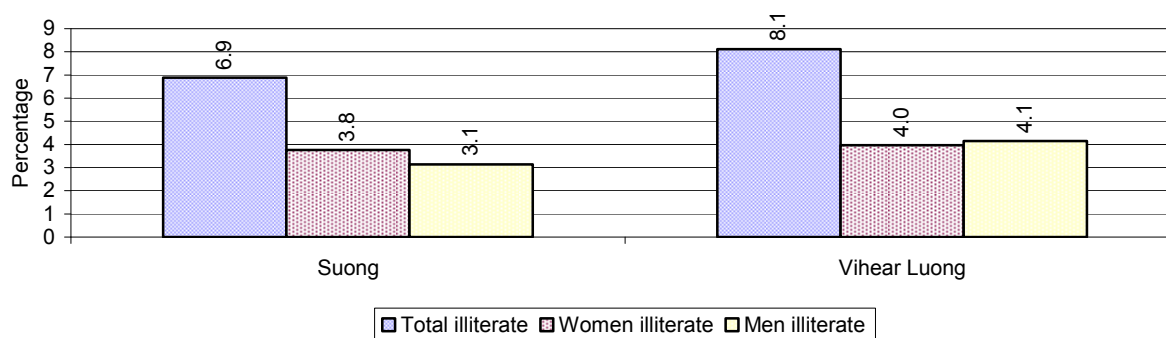
### 3.1.20 Percentage of illiterate People between 15-60, over 3 years

Illiteracy Status	2006	2007	2008	
	%	%	%	Number
Illiterate people, 15-60 years old	9%	8%	7%	1,632 person(s)
Illiterate females, 15-60 years old	5%	5%	4%	854 person(s)
Illiterate people, 15-17 years old	5%	3%	3%	72 person(s)

Illiteracy Status	2006 %	2007 %	2008	
			%	Number
Illiterate females, 15-17 years old	3%	2%	1%	35 person(s)
Illiterate people, 18-24 years old	6%	5%	4%	188 person(s)
Illiterate females, 18-24 years old	3%	2%	2%	83 person(s)
Illiterate people, 25-60 years old	11%	10%	9%	1,372 person(s)
Illiterate females, 25-60 years old	6%	6%	5%	736 person(s)

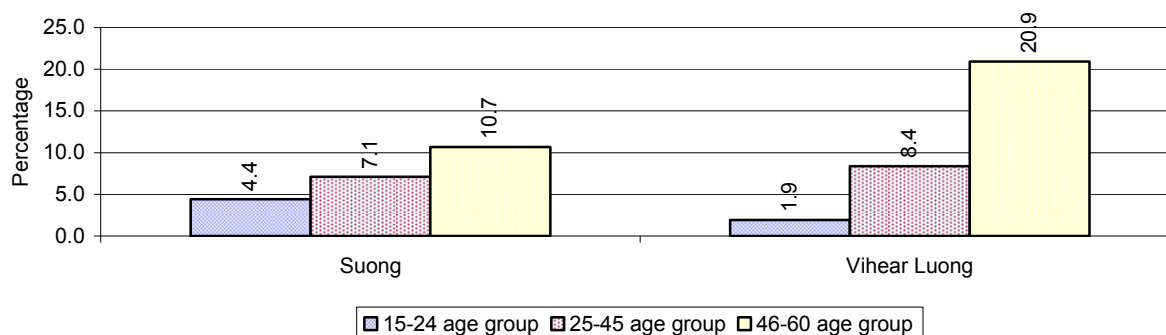
**Note:** Percentage is calculated on the basis of number of people in age each group.

### 3.1.21 Percentage illiterate People among 15-60 yrs old, by Commune, in 2008



**Note:** Percentages are calculated on the basis of number of people in that age group.

### 3.1.22 Percentage illiterate People for 15-24 yrs, 25-45 yrs and 46-60 yrs, by Commune, in 2008



**Note:** Percentage of illiterate people in each age group is calculated on the basis of number of people in that age group.

## 3.2 Health

### 3.2.1 Health Situation of Women and Children, over 3 years

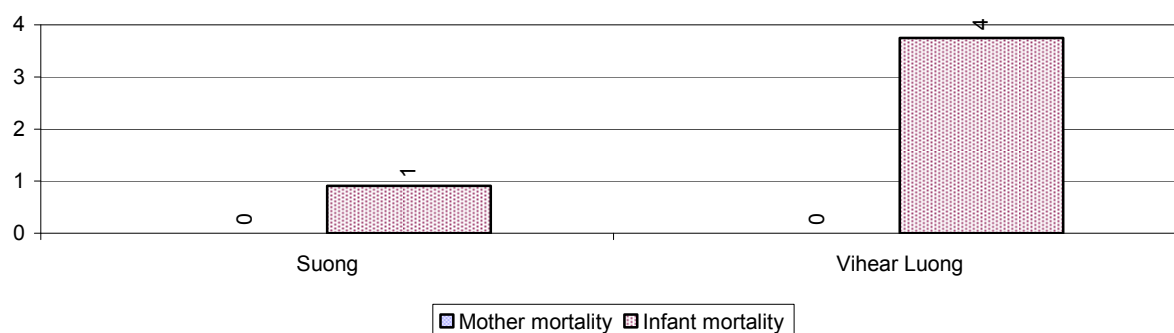
Description	2006	2007	2008
Number families with a birth during the year	415 families	403 families	423 families
Number of women who had their baby delivered by a TBA	51 person(s)	39 person(s)	20 person(s)
Percentage of women who had their baby delivered by a TBA	12 %	10 %	5 %
Number of women who had their baby delivered by a midwife	364 person(s)	364 person(s)	403 person(s)



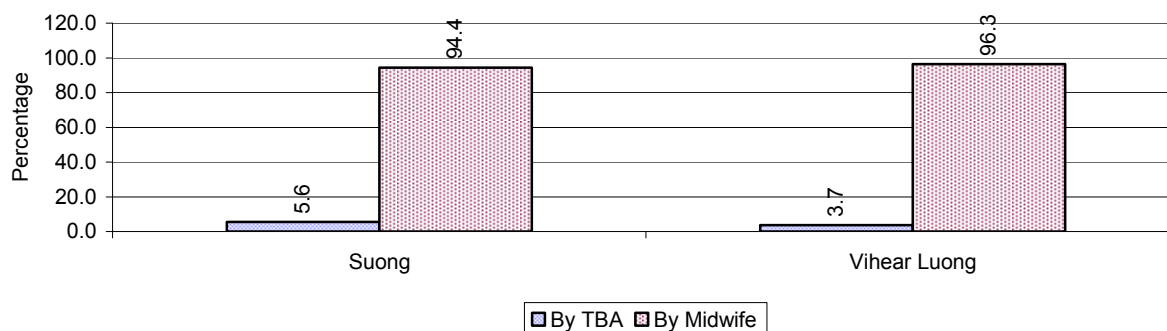
Description	2006	2007	2008
Percentage of women had their baby delivered by a midwife	88 %	90 %	95 %
Number of mothers who died within 1 month of giving birth	0 person(s)	0 person(s)	0 person(s)
Mothers who died within 1 month of giving birth per 100,000 families having a delivery	0	0	0
Number of infants born during the year	426 person(s)	403 person(s)	424 person(s)
Number of Infants who died within 1 month	1 person(s)	0 person(s)	4 person(s)
Infants mortality within 1 month per 1,000 births	2	0	9
Number of children who died below the age of 5.	1 person(s)	5 person(s)	6 person(s)
Number of infants, aged 9-12 months, born during the year	174 person(s)	188 person(s)	190 person(s)
Nr. infants, aged 9-12 months, not receiving full immunization	1 person(s)	0 person(s)	5 person(s)
% of 9-12 months infants, not receiving full immunization	1 %	0 %	3 %

**Note:** TBA = Traditional Birth Attendant

### 3.2.2 Mothers dying within 0 days to 1 month of giving Birth and Infants dying within 1 month in 2008, by Commune

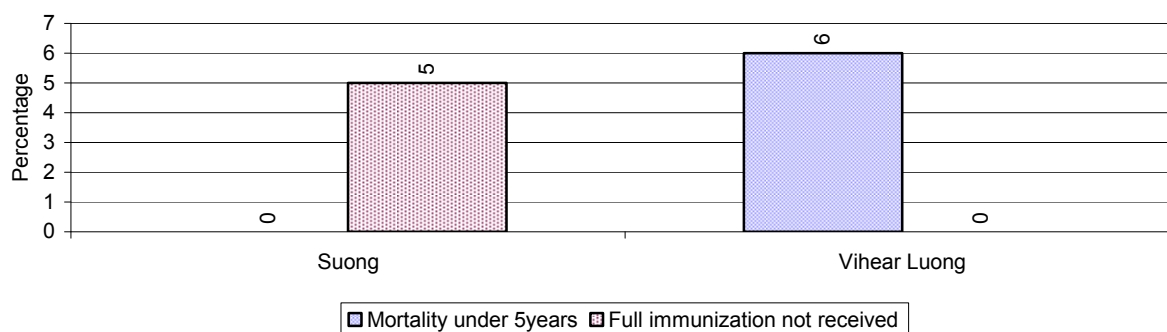


### 3.2.3 Percentage of Women delivering with a TBA or Midwife, by Commune



**Note:** Calculated as a percentage of total deliveries

### 3.2.4 Percentage of Children dying below 5 & of 9-12 months not receiving full Immunization, by Commune, in 2008



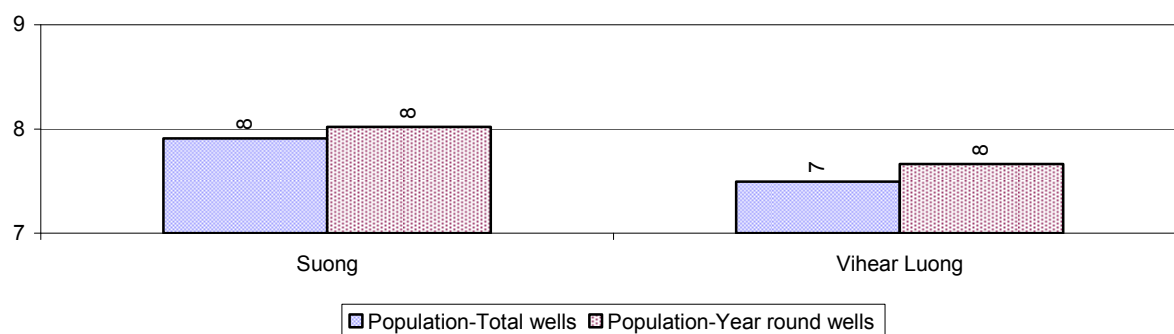
**Note:** Mortality rate calculated as a percentage of the total 5 year old population. Lack of immunization received calculated as a percentage of the total number 9-12 months olds there are

## 3.3 Water and Sanitation

### 3.3.1 Number of different types of Wells over 3 years

Type of wells	Number of wells by year		
	2006	2007	2008
<i>Total number of pumped or mixed wells</i>	3,084	2,995	3,273
Year-round usable pumped or mixed wells	3,063	2,983	3,236
Dry season unusable pump or mixed wells	21	12	37
Pump or mixed wells needing repair/rehabilitation	16	74	24
<i>Total number of ring wells</i>	1,054	1,285	1,317
Year-round usable ring wells	1,034	1,243	1,276
Dry season unusable ring wells	20	42	41
Ring wells needing repair/rehabilitation	91	42	18
<i>Total number of unprotected dug wells</i>	1,055	802	710
Year-round usable unprotected dug wells	956	746	653
Dry season unusable unprotected dug wells	99	56	57

### 3.3.2 Ratio of People to Wells, by Commune, in 2008



**Note:** Year-round wells excluding unprotected wells

### 3.3.3 Potable Ponds over 3 years

Type of Pond	2006	2007	2008
Total number of normal-type ponds	0 pond	0 pond	0 pond
Year-round usable normal-type ponds	0 pond	0 pond	0 pond
Dry season unusable normal-type ponds	0 pond	0 pond	0 pond
Normal-type ponds needing repair/rehabilitation	0 pond	0 pond	0 pond
Total number of filter ponds	0 pond	0 pond	0 pond
Year-round usable filter ponds	0 pond	0 pond	0 pond
Filter ponds, dry season unusable	0 pond	0 pond	0 pond
Filter ponds needing repair/rehabilitate	0 pond	0 pond	0 pond

### 3.3.4 Ratio of People to normal Ponds, by Commune in 2008

There were no normal ponds in this District in 2008

### 3.3.5 Ratio of People to Filter Ponds, by Commune, in 2008

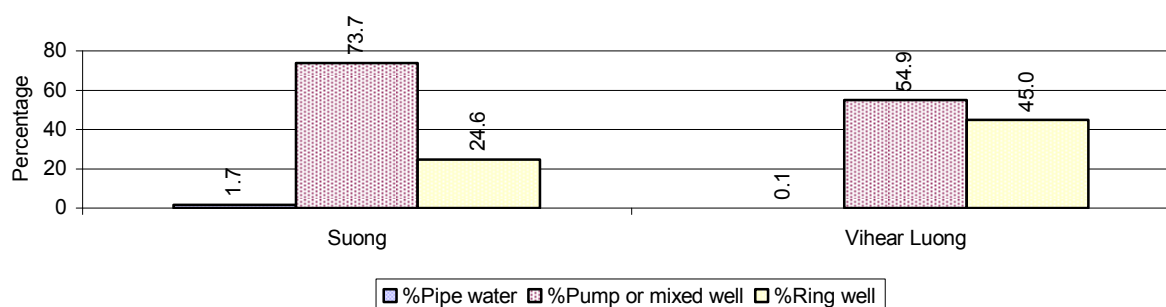
There were no filter ponds in this District in 2008

### 3.3.6 Source of potable Water for Households, over 3 years

Water sources	2006 %	2007 %	2008	
			%	Number
Families using water from purification system	1%	0 %	1 %	83 families
Families using water from pump, mixed wells	67%	66 %	67 %	5,131 families
Families using water from ring wells and open dug wells	32%	34 %	32 %	2,488 families
Families using water from pond	0%	0 %	0 %	0 families
Families using water from rain water storage	0%	0 %	0 %	0 families
Families using water from rivers, lakes, natural ponds and reservoirs	0%	0 %	0 %	0 families

**Note:** Calculated as a percentage of the total number of families.

### 3.3.7 Percentage Families using different Water Sources, by Commune, in 2008



**Note:** Calculated as a percentage of the total number of families in each commune

### 3.3.8 Percentage Families using Water from Rain Water Storage, Ponds and natural Sources (rivers/lakes/natural ponds/reservoirs), by Commune, 2008

There were no Families using Water from Rain Water Storage, Ponds and natural Sources (rivers/lakes/natural ponds/reservoirs) in this District in 2008

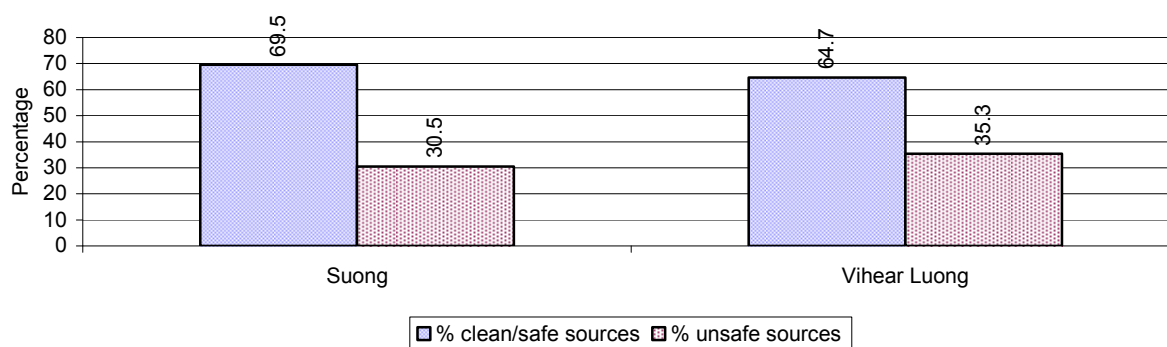
**Note:** Calculated as a percentage of the total number of families in each commune

### 3.3.9 Drinking Water Sources in the dry Season over 3 years

Percentage Families that get drinking water from:	2006	2007	2008	
	%	%	%	Number
from clean/safe sources	73 %	71 %	68 %	5,212 families
from unsafe sources	27 %	29 %	32 %	2,490 families

**Note:** Calculated as a percentage of the total number of families.

### 3.3.10 Percentage Families using safe and unsafe Water Sources in the dry Season, by Commune, in 2008



**Note:** Calculated as a percentage of the total number of families in each commune.

### 3.3.11 Drinking Water Purification by Households, over 3 years

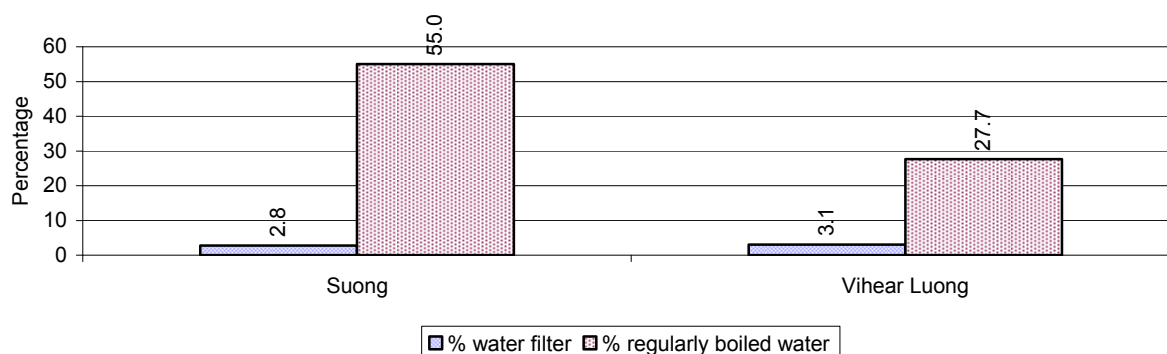
This table shows the different ways families make water safe for drinking.

Families, who:	2006	2007	2008	
	%	%	%	Number
Filter water for drinking	3%	2%	3 %	222 families
Boil water for drinking	42%	45%	45 %	3,441 families

**Note:** Calculated as a percentage of the total number of families

### 3.3.12 Percentage Families filtering Water or regularly boiling Water, by Commune, in 2008

This graph shows the different ways families make drinking water safe.



**Note:** Calculated on as a percentage of the total number of families in each commune.

### 3.3.13 Families' access to Water, over 3 years

Families access to water	2006 %	2007 %	2008	
			%	Number
Families with water at home or in less then 150m	88%	84%	94 %	7,238 families
Families with water 150m or more away from home	8%	5%	2 %	188 families

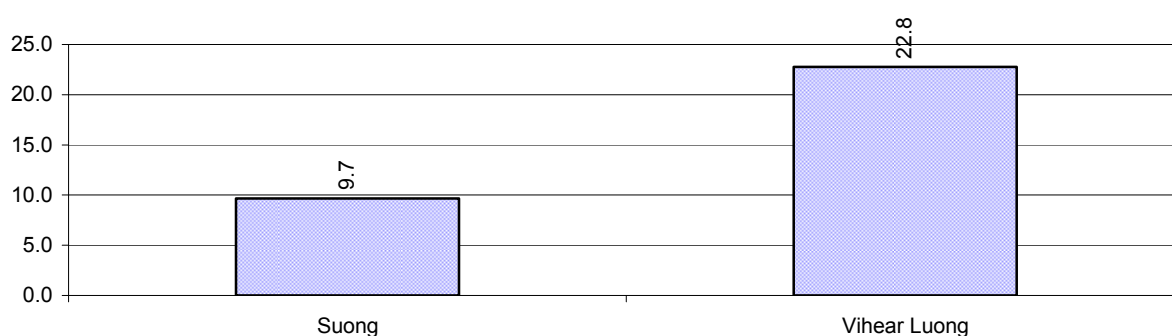
**Note:** Calculated as a percentage of the total number of families

### 3.3.14 Ratio of people to Latrines over 3 years

Description	2006 Ratio	2007 Ratio	2008	
			Ratio	Number
Ratio of people to latrines	12.2	14.5	12.2	2,918.0

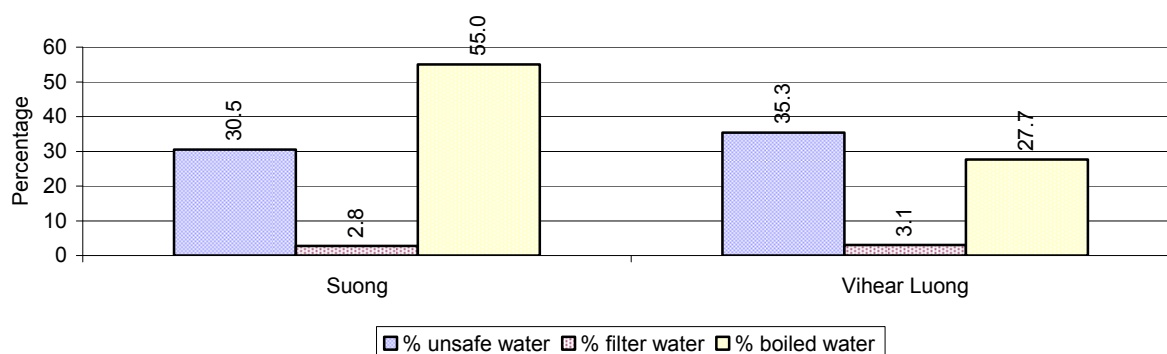
**Note:** Ratio calculated by dividing the number of houses with latrines by the total population

### 3.3.15 Ratio of People to Latrines, by Commune, in 2008



**Note:** Ratio calculated by dividing the number of houses with latrines by the total population in a Commune.

### 3.3.16 Percentage of Families drinking boiled, filtered or unsafe Water, by Commune, in 2008



**Note:** Calculated as a percentage of the total number of families in each commune.

## 3.4 Vulnerable groups

### 3.4.1 Vulnerable Groups in need of special Protection over 3 years

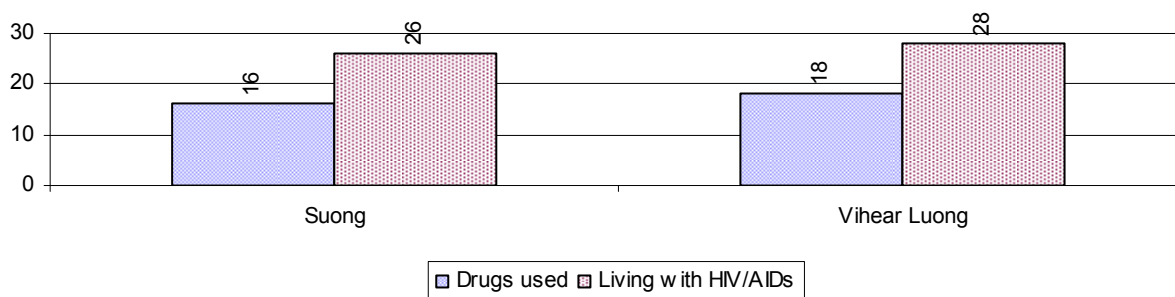
Vulnerable groups	2006	2007	2008
Victims of sexual abuse	3 person(s)	0 person(s)	1 person(s)
Victims of human trafficking	0 person(s)	0 person(s)	0 person(s)

Vulnerable groups	2006	2007	2008
Families with family member(s) using drugs	6 families	19 families	34 families
Families with family member(s) living with HIV/AIDS	51 families	51 families	54 families
Children under 18 yrs old whose parent died of AIDS	36 person(s)	57 person(s)	35 person(s)
Orphaned/abandoned children under 18 yrs old (all cases)	98 person(s)	89 person(s)	78 person(s)
Elderly persons without guardian	35 person(s)	29 person(s)	34 person(s)
Disabled people able to earn an income	28 person(s)	22 person(s)	25 person(s)
Disabled people unable to earn an income	17 person(s)	23 person(s)	25 person(s)
Disabled people under 18 yrs old	11 person(s)	7 person(s)	8 person(s)
Victims of natural disasters	0 families	2 families	0 families
Victims of land mines and unexploded weapons	0 person(s)	0 person(s)	0 person(s)

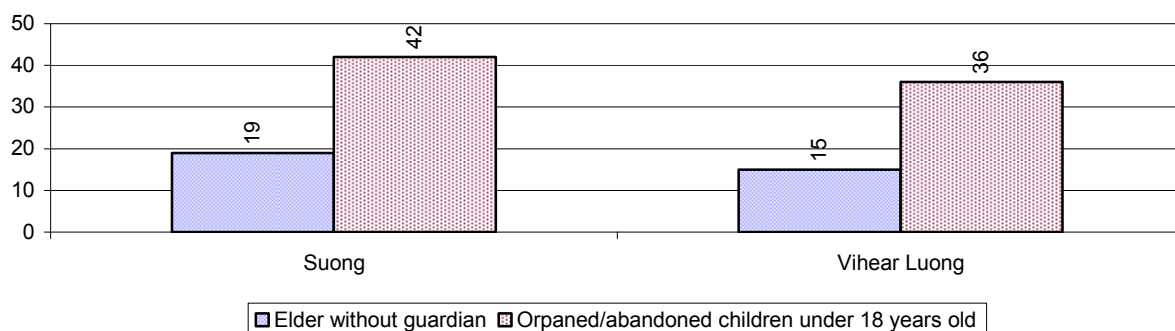
### 3.4.2 Registered Victims of sexual Abuse or Trafficking, by Commune, for 2008



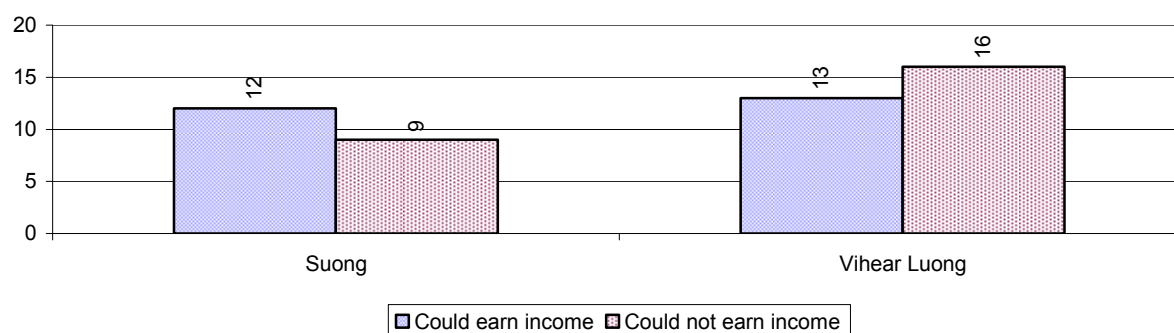
### 3.4.3 Registered Families with Member(s) using Drugs or living with HIV/AIDS, by Commune, for 2008



### 3.4.4 Elderly Persons without a Guardian and orphaned/abandoned Children under 18 years old, by Commune, for 2008



### 3.4.5 Number of disabled People who could or could not earn an Income, by Commune, for 2008



### 3.4.6 Number of Families who suffered from natural Disasters, and number of Victims of Land Mines and unexploded Weapons, by Commune, in 2008

There were no Families who suffered from natural Disasters and Victims of Land Mines and unexploded Weapons in this District in 2008

## 3.5 Migration

### 3.5.1 Migration over 3 years

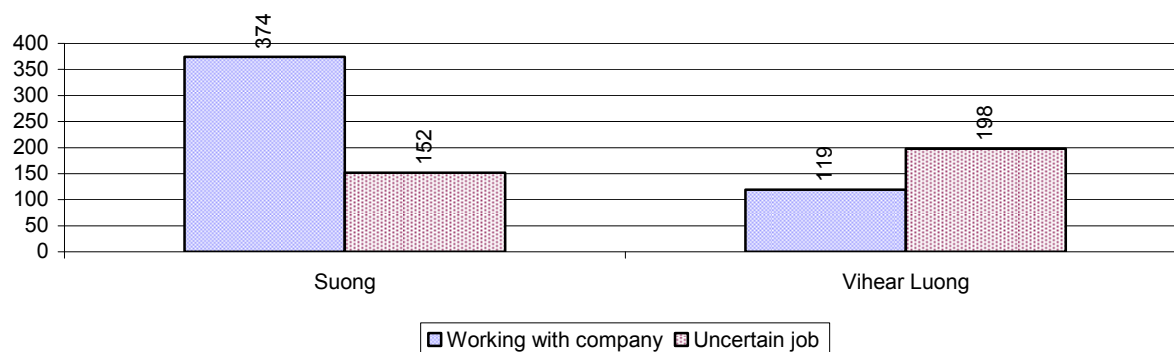
Description	2006	2007	2008
Number of families permanently in-migrated	51 families	57 families	53 families
Total number of people	239 person(s)	219 person(s)	181 person(s)
Total number of female	128 person(s)	113 person(s)	88 person(s)
Number of families permanently out-migrated	67 families	74 families	85 families
Total number of people	302 person(s)	376 person(s)	351 person(s)
Total number of female	156 person(s)	185 person(s)	195 person(s)
Number of families staying temporarily	54 families	70 families	45 families
Total number of people	210 person(s)	259 person(s)	204 person(s)
Total number of female	99 person(s)	122 person(s)	96 person(s)

### 3.5.2 Job Migration

Description	2006	2007	2008
Number of people migrated to work with company/factory	2%	2%	2% 493 persons
Number of people migrated to work, but have uncertain jobs	2%	2%	2% 350 persons

**Note:** Calculated as a percentage of the total population of 18-60 year olds

### 3.5.3 Number of People working outside their home Villages in a Company/Factory or with an uncertain Job in 2008

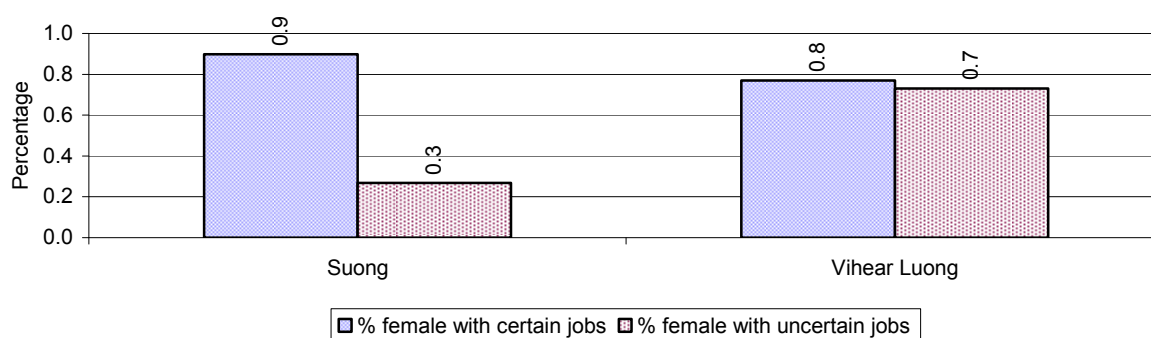


### 3.5.4 Female migration over 3 years

Description	2006 %	2007 %	2008	
			%	Number
Total number of migrants	2.3%	2.3%	2.4%	843 person(s)
Number of female migrants	1.2%	1.3%	1.3%	458 person(s)
Total number of migrants, who go to work with company/factory (with certain jobs)	1.1%	1.2%	1.4%	493 person(s)
Number of female migrants with certain jobs	0.7%	0.8%	0.9%	303 person(s)
Total number of migrants with uncertain jobs	1.1%	1.1%	1.0%	350 person(s)
Number of female migrants with uncertain jobs	0.5%	0.5%	0.4%	155 person(s)

**Note:** Calculated as a percentage of the total population

### 3.5.5 Percentage female Migrants with certain and uncertain Jobs, by Commune, in 2008



**Note:** Calculated as a percentage of the total population of the commune



## 4 Natural Resources and Environment (NRE)

### 4.1 Families involved with NRE issues over 3 years

Description	2006 %	2007 %	2008	
			%	Number
Families living with forest by products	0 %	0 %	0 %	0 families
Families living in a protected area	0 %	0 %	0 %	0 families
Houses with access to garbage collection service	4 %	4 %	4 %	346 families
Families affected by environmental pollution	0 %	0 %	0 %	4 families
Families using chemical fertilizer	26 %	27 %	27 %	2,066 families
Families using chemical pesticide	4 %	3 %	5 %	410 families

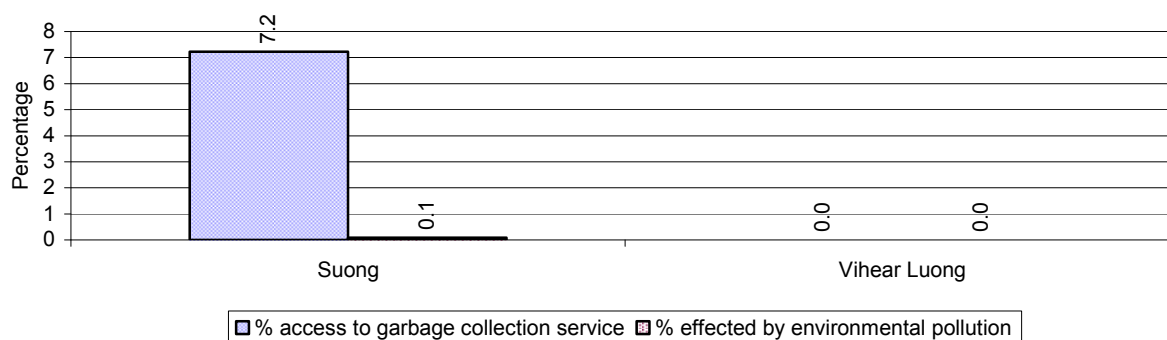
**Note:** Calculated as a percentage of the total number of families

### 4.2 Percentage of Families involved with Natural Resource issues, by Commune, for 2008

There were no families involved with natural resource issues in this District in 2008

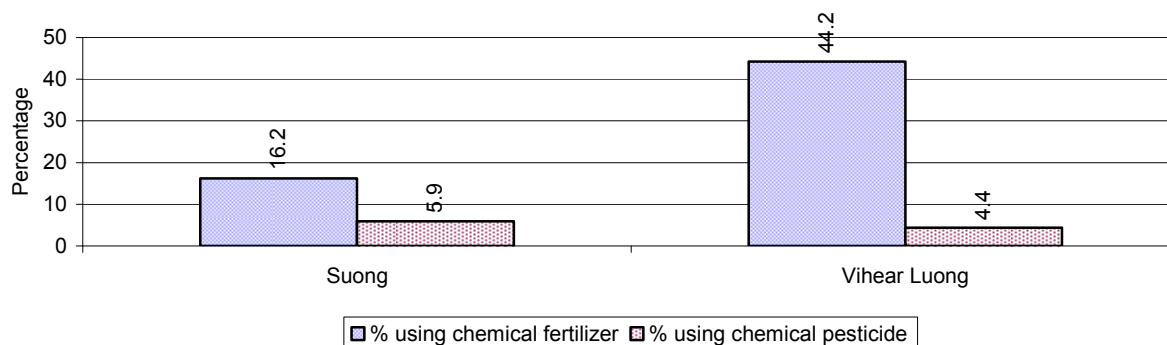
**Note:** Calculated as a percentage of the number of families in each commune

### 4.3 Percentage Houses with access to Garbage collection and Families affected by environmental Pollution, by Commune, for 2008



**Note:** Garbage collection is calculated as a percentage of the total number of houses in each commune and families affected by environmental pollution is calculated as a percentage of the total number of families in each commune.

### 4.4 Percentage Families using chemical Fertilizer and chemical Pesticides, by Commune, for 2008



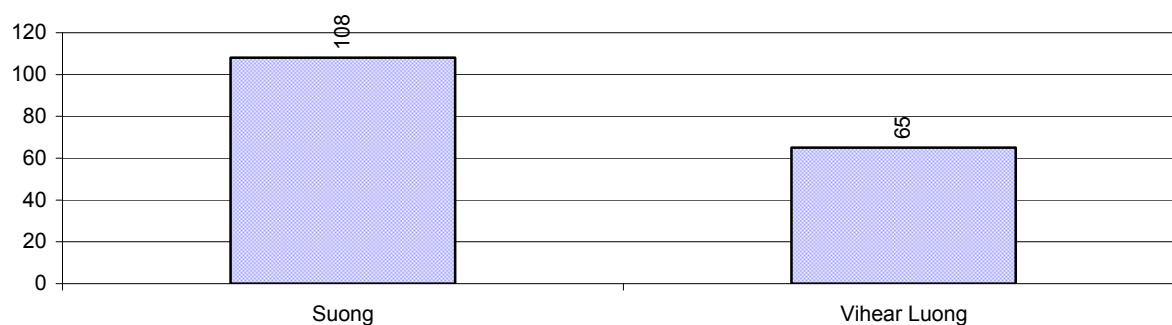
**Note:** Calculated as a percentage of the total number of families in each commune

## 5 Administration and Security

### 5.1 Birth Registration across 3 years

Description	2006	2007	2008
Number of infants to be registered	425 person(s)	403 person(s)	420 person(s)
Number of unregistered infants the year	54 person(s)	123 person(s)	173 person(s)
Percentage of infants unregistered	13 %	31 %	41 %

### 5.2 Number of unregistered Infants born in 2008, by Commune

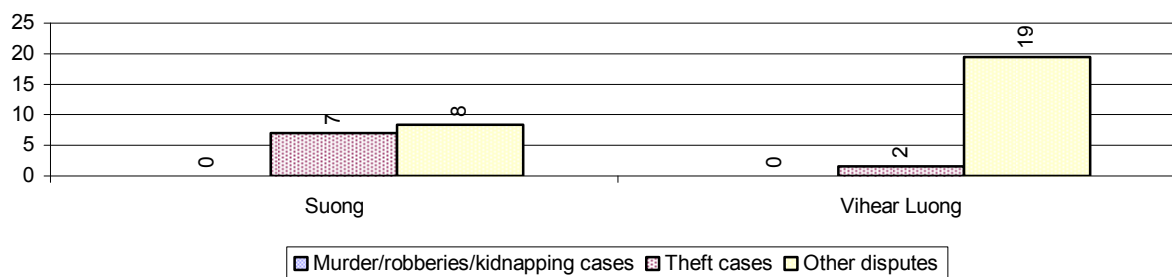


### 5.3 Registered criminal Cases over 3 years

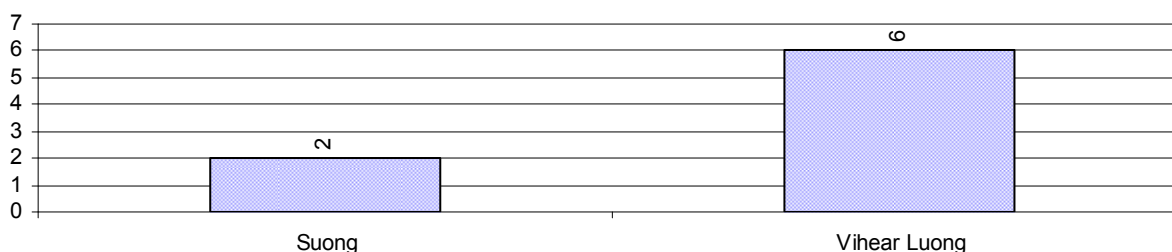
Description	2006	2007	2008
Murders, robberies and kidnapping cases	2 case(s)	0 case(s)	0 case(s)
Theft cases	20 case(s)	13 case(s)	18 case(s)
land dispute cases	7 case(s)	12 case(s)	8 case(s)
Other disputes cases	53 case(s)	47 case(s)	44 case(s)

**Note:** this reflects only registered criminal cases

### 5.4 Registered criminal Cases per 10,000 people, by Commune, for 2008



### 5.5 Number of registered Land Disputes, by Commune, in 2008

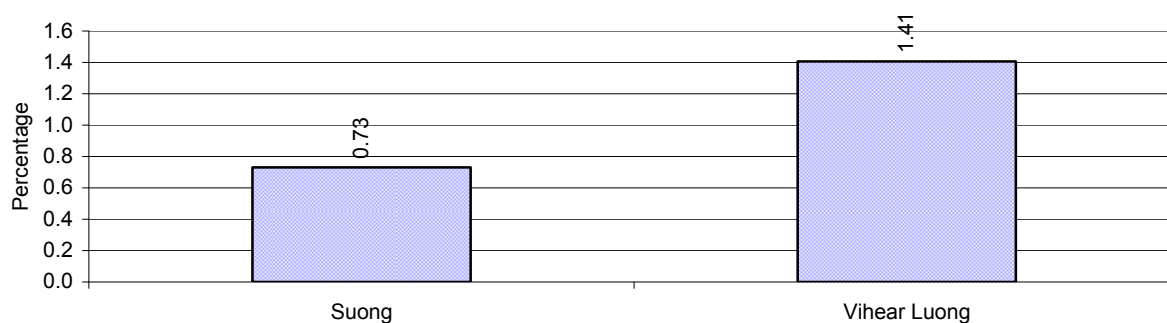


## 6 Gender

### 6.1 Registered Domestic Violence over 3 years

Description		2006	2007	2008
Families experiencing domestic violence		79 families	62 families	76 families(s)
% families experiencing domestic violence		1 %	1 %	1 %
Domestic violence cases reported by village chiefs		18 case(s)	21 case(s)	76 case(s)
Type	Physical violence	4 case(s)	9 case(s)	34 case(s)
	Sexual violence	0 case(s)	0 case(s)	1 case(s)
	Mental violence	6 case(s)	10 case(s)	35 case(s)
	Household economic violence	8 case(s)	2 case(s)	6 case(s)
Number of administrative decisions on domestic violence		18 case(s)	17 case(s)	46 case(s)
% of administrative decisions on domestic violence		100 %	81 %	61 %

### 6.2 Percentage of registered cases of Families experiencing domestic Violence, by Commune, in 2008



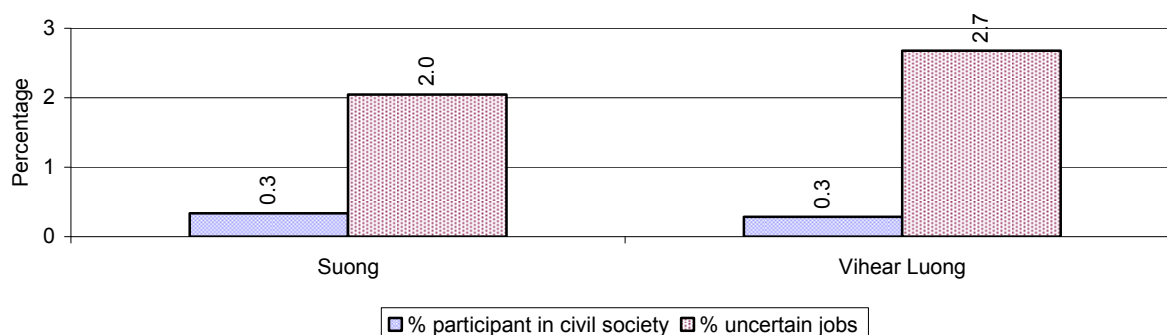
**Note:** Calculated as a percentage of the total number of families in each commune

### 6.3 Women's involvement over 3 years

Description	2006 %	2007 %	2008	
			%	Number
People participating in civil society	1%	0%	1%	240 person(s)
Women participating in civil society	0%	0%	0%	113 person(s)
People, 18-60 yrs, with uncertain/irregular jobs	4%	4%	4%	886 person(s)
Women, 18-60 yrs, with uncertain/irregular jobs	2%	2%	2%	448 person(s)

**Note:** Participation can be in NGOs, CBOs, credit groups, women's unions, parties and other civil society organizations. The first section is calculated as a percentage of the total population. The second section is calculated as a percentage of the total 18-60 year old population.

#### 6.4 Percentage of Female Participants in Civil Society and of 18-60 year women with uncertain Jobs, by Commune, in 2008



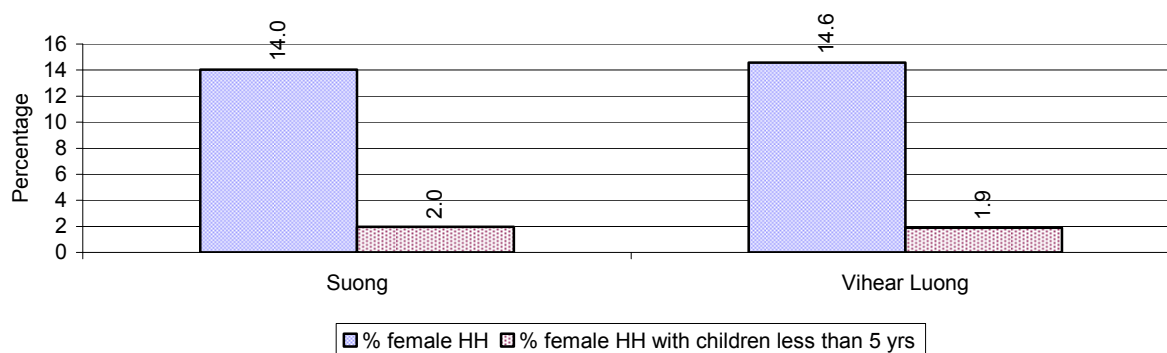
**Note:** Percentage of female participants in civil society is calculated as a percentage of the total population per commune. The percentage of 18-60 years old women with uncertain jobs is calculated as a percentage of the total 18-60 year old population per commune.

#### 6.5 Female-headed Households over 3 years

Families with:	2006	2007	2008	
	%	%	%	Number
Households in which a woman is the family head	14%	14%	14%	1,097 families
Households in which a woman is the family head with children of less than 5 yrs	2%	2%	2%	149 families

**Note:** Calculated as a percentage of the total number of families

#### 6.6 Percentage female-headed Households and with Children of less than 5 years old, by Commune, in 2008



**Note:** Calculated as a percentage of the total number of families in each commune  
HH: Headed Household

## 7 Indigenous People in the District

### 7.1 Ethnic Minorities in the District over 3 years

Race of indigenous	2006		2007		2008	
	# families	# population	# families	# population	# families	# population
Phnong	0 families	0 person(s)	0 families	0 person(s)	0 families	0 person(s)
Kouy	0 families	0 person(s)	0 families	0 person(s)	0 families	0 person(s)
Stieng	0 families	0 person(s)	0 families	0 person(s)	0 families	0 person(s)
Mil	0 families	0 person(s)	0 families	0 person(s)	0 families	0 person(s)
Kroal	0 families	0 person(s)	0 families	0 person(s)	0 families	0 person(s)
Thmorn	0 families	0 person(s)	0 families	0 person(s)	0 families	0 person(s)
Khaonh	0 families	0 person(s)	0 families	0 person(s)	0 families	0 person(s)
Tompouonn	0 families	0 person(s)	0 families	0 person(s)	0 families	0 person(s)
Charay	0 families	0 person(s)	0 families	0 person(s)	0 families	0 person(s)
Kroeung	0 families	0 person(s)	0 families	0 person(s)	0 families	0 person(s)
Kavet	0 families	0 person(s)	0 families	0 person(s)	0 families	0 person(s)
Saouch	0 families	0 person(s)	0 families	0 person(s)	0 families	0 person(s)
Lun	0 families	0 person(s)	0 families	0 person(s)	0 families	0 person(s)
Kachak	0 families	0 person(s)	0 families	0 person(s)	0 families	0 person(s)
Praov	0 families	0 person(s)	0 families	0 person(s)	0 families	0 person(s)
Others	0 families	0 person(s)	0 families	0 person(s)	0 families	0 person(s)
<b>Total</b>	0 families	0 person(s)	0 families	0 person(s)	0 families	0 person(s)

**Note:** "Others" refer to other ethnic groups which are not listed.

### 7.2 Other Minorities in the District over 3 years

Minority	2006		2007		2008	
	# families	# population	# families	# population	# families	# population
Khmer Islamic	67 families	346 person(s)	34 families	214 person(s)	76 families	346 person(s)
Vietnamese	20 families	94 person(s)	24 families	95 person(s)	22 families	93 person(s)
Laos	0 families	0 person(s)	0 families	0 person(s)	0 families	0 person(s)

**Note:** Number of indigenous and minority population are additional data, so some village may not recorded.



## **SECTION C: PLANS AND PROJECTS**





## 8 Priorities and Plans

### 8.1 Priorities of Commune Councils for 2009 in the District by Sector

The District Priority Activity Matrix (DPAM) data are taken from the CDPD. The DPAM is used for the District Integration Workshop (DIW), to show what kind of projects the commune has proposed in their Commune Investment Plan (CIP) for 2009. Donors, departments and other agencies then consider which projects they want to support and which projects they are not interested in. This results in Temporary Agreements between the Commune Council and the Supporter (NGO, Department, private donor, etc), as shown in table 8.2

No.	Project Name	Suong	Vihear Luong	Req.Project
		31701	31702	Total
Economic				
1	Compost fertilizer training	6 training	25 training	2
2	Chemical and pesticide application training	6 training	25 training	2
3	Vegetable growing training	2 training	20 training	2
4	Mixed farming system training	6 training	25 training	2
5	Rice field demonstration	8 training	15 demo	2
6	Mushroom growing training	2 training	20 training	2
7	Rice cultivation technique training	3 training		1
8	Animal vaccination request	1400 Head	10 time	2
9	Village veterinary training	1 training	5 training	2
10	Animal raising training	6 training	25 training	2
11	Pig raising training	1 training		1
12	Chicken raising training	1 training		1
13	Livestock feed producing training		15 training	1
14	Rice seed request	6000 Kg		1
15	Livestock raising request		1200 Head	1
16	Grazing seed request	12 Kg	10 Kg	2
17	Fish raising training		20 training	1
18	Fish fingerling request		10000 fingerling	1
19		1000 m	2000 m	2
20		1 place	9 place	2
21		3000 m	23000 m	2
22	Water pump		10 time	1
23	Natural canal/water way rehabilitation		2 place	1
24			4 place	1
25		1000 m	11000 m	2

District Data Book 2009: District Profile

No.	Project Name	Suong	Vihear Luong	Req.Project
		31701	31702	Total
26			1 place	1
27			1 Pond	1
28	Cash credit	300 family	12 Team	2
29	Rice seed bank		25 T	1
30	Livestock bank	30 Head		1
31	Electricity supply	750 Riels	0 kw	2
<b>Social</b>				
1	Family planning	9 time	20 time	2
2	Reproductive health awareness education	9 time	10 time	2
3	Antenatal care service accessibility improvement	12 time		1
4	Women and child health care program	2 time		1
5	Condom education		20 time	1
6	HIV/AIDS awareness education	9 training	20 training	2
7	HIV/AIDS infected person assistance	12 Month	20 time	2
8	Vitamin A provision campaign	12 time		1
9	Children immunization provision	12 time	12 time	2
10	Antenatal vaccination provision	12 time		1
11	VHV strengthening	1 training	20 time	2
12	DOTS mobile implementation		20 time	1
13	Maternal health care education	12 time	20 time	2
14	Breastfeeding awareness education		20 time	1
15	Deworming of school children	390 bag		1
16	Latrine construction	120 toilet	250 toilet	2
17	Sanitation education	2 time		1
18	KMeragppl;meFüa)aycMeraHTwks¥at		1500 tank	1
19	KMeragpAt;pÁg;Twks¥at	0 place	1396 house	2
20		60 well	120 well	2
21			120 well	1
22	Literacy class		10 class	1
23	School building		18 room	1
24		3 room		1
25	Motivating pupil's parents for school enrollment	2 time		1
26	Education for all dissemination	2 time		1
27	School materials support to poor pupils		750 set	1
28	Food/meal provision to school children	12 Month	12 Month	2

District Data Book 2009: District Profile

No.	Project Name	Suong	Vihear Luong	Req.Project
		31701	31702	Total
29	Bicycle/motorcycle/radio repairing skill training	1 training		1
<b>NREM</b>				
1	Environmental awareness and law education	2 time	20 time	2
2	Fishery law education	2 time		1
3	Environmental poster installation		10 board	1
4	Education on the effect of polluted water	2 time		1
5	Tree plantation project	12500 Tree	2000 Tree	2
6	Illegal fishing prevention	1 time	20 time	2
7	Fish raising community support	1 time		1
8	Sewage culvert system construction/rehabilitation	300 m		1
9	Public rubbish bin sitting	200 Garbage bin		1
10	Household waste management education	1 place		1
11	Biogas cooking project		12 set	1
<b>Administration and Security</b>				
1	Civil registration encouragement	2 time		1
2	Commune office construction/renovation		1 building	1
3	Land law dissemination	2 time	20 time	2
4	Provision of land titles/certificates	500 doc	0 doc	2
5	Land use planning	2 time		1
6	People guard activities formation/strengthening		20 time	1
7	Drug and related law education	2 time		1
8	Gambling control/elimination activation		20 time	1
9	Drug business/use prevention	2 time	20 time	2
10	Family/temporary dweller record book provision	2 time	20 time	2
11	Identification card issued		20 time	1
12	Law/regulation dissemination	2 time		1
13	Penal and civil law dissemination		20 time	1
<b>Gender</b>				
1	Gender mainstreaming concept training	4 training		1
2	Gender mainstreaming among local people	4 training		1
3	Gender concept/equity mainstreaming	4 training	20 training	2
4	Gender and child rights dissemination		25 time	1
5	Women & Children FP strengthening	1 time		1
6	Women capacity building for social participation	2 time		1
7	Woman and children's rights dissemination	4 training		1

District Data Book 2009: District Profile

No.	Project Name	Suong	Vihear Luong	Req.Project
		31701	31702	Total
8	Women vocational training		12 training	1
9	Tailor skill training	1 training		1
10	Lady makeup/hair dressing skill training	24 person		1
11	Law against domestic violence dissemination	4 time	20 time	2
12	Law against trafficking dissemination	4 time		1
13	Trafficking of women/children control activity strengthening		20 time	1
14	Prostitutes business reduction education	1 time		1

**Source:** CDPD – District Priority Matrix

## 8.2 Temporary Agreements by Commune, for 2009<sup>2</sup>

At the District Integration Workshop (DIW) the Supporters (donors, agencies, private donors, NGOs, etc.) identify which projects/activities they would like to support or they put forward their own projects to be implemented in a particular commune. Once there is agreement between Commune Councils and Supporters on specific projects a **Temporary Agreement** is signed by the commune and the Supporter to show their mutual commitment to the identified projects/activities.

It is important to keep in mind that such Temporary Agreements do not necessarily result in implementation.

### 8.2.1 Temporary Agreements for 2009 as per DIW 2008 for Commune: Suong

Commune GIS	Commune	Temporary Agreements				Supporter	Funding Source	Listed in CIP befor DIW
		Project Name	Quantity	Unit	Est.Cost (K.Riels)			
Economic								
31701	Suong	Chicken raising training	1	demo	0	Department of Agriculture Forestry and Fisheries		✓
31701	Suong	Mushroom growing training	1	demo	0	Department of Agriculture Forestry and Fisheries		✓
31701	Suong	Animal vaccination request	1000	Head	0	Department of Agriculture Forestry and Fisheries		✓
Social								
31701	Suong	Consultation and curing services at hospital	0	time	0	Department of Health		□
31701	Suong	HIV/AIDS awareness education	0	training	0	World Relief - Cambodia		✓
31701	Suong	Bicycle/motorcycle/radio repairing skill training	1	training	2000	Department of Social and Veteran Affairs and Youth Rehabilitation		✓
31701	Suong	Outdoor health issue consultation	0	time	0	Department of Health		□
31701	Suong	Vaccination for all types of diseases	0	time	0	Department of Health		□
31701	Suong	Birth spacing medicine for women	0	time	0	Department of Health		□
31701	Suong	Antenatal care service provision	0	time	0	Department of Health		□
31701	Suong	Antenatal and postnatal health care to prevent HIV transmitted	0	time	0	Department of Health		□
31701	Suong	HIV/AIDS voluntary and confidential blood test service provision	0	time	0	Department of Health		□

<sup>2</sup> Not all the data from the CDPD has been translated to English, this has resulted in some cells in the TA tables being blank.

District Data Book 2009: District Profile

Commune GIS	Commune	Temporary Agreements				Supporter	Funding Source	Listed in CIP befor DIW
		Project Name	Quantity	Unit	Est.Cost (K.Riels)			
31701	Suong	Anti-HIV/AIDS drug for infected adult and children	0	time	0	Department of Health		<input type="checkbox"/>
31701	Suong	Vitamin A supply to 6-59 months old children	0	time	0	Department of Health		<input type="checkbox"/>
31701	Suong	Ferrous medicine 48 days supply during postnatal period	0	time	0	Department of Health		<input type="checkbox"/>
31701	Suong	Patients home based care	0	time	17760	New Farmer		<input type="checkbox"/>
31701	Suong	HIV/AIDS prevention awareness education for prostitutes and their client	0	time	13688	Phnom Srei Association for Development		<input type="checkbox"/>
31701	Suong	Zero interest rate cash credit for blind people	0	time	0	Association for Blind of Cambodia		<input type="checkbox"/>
31701	Suong	Ferrous medicine supply to pregnant women	0	time	0	Department of Health		<input type="checkbox"/>
31701	Suong	Transfer the blind for medical check and treatment	0	time	0	Association for Blind of Cambodia		<input type="checkbox"/>
31701	Suong	Hospital building construction	0	building	0	Department of Health		<input type="checkbox"/>
31701	Suong	School office repairing	0	building	0	Department of Health		<input type="checkbox"/>
31701	Suong	Equity fund support for the poor	0	time	0	Department of Health		<input type="checkbox"/>
31701	Suong	Transfer blind children, 8-14 years old to blind school	0	time	0	Association for Blind of Cambodia		<input type="checkbox"/>
<b>NREM</b>								
31701	Suong	Bio gas stove	5	place	0	Department of Agriculture Forestry and Fisheries		<input type="checkbox"/>
<b>Administration and Security</b>								
31701	Suong	Commune development news on 92.5 MHz radio station broadcasting support	0	time	0	Department of Information		<input type="checkbox"/>
31701	Suong	One village one product organizing	1	training	18000	Department of Commerce		<input type="checkbox"/>
31701	Suong	Commune master plan	0	time	0	Department of Land Management, Urban Planning & Construction		<input type="checkbox"/>
31701	Suong	Land use map provision	0	time	0	Department of Land Management, Urban Planning & Construction		<input type="checkbox"/>
<b>Gender</b>								

Commune GIS	Commune	Temporary Agreements				Supporter	Funding Source	Listed in CIP before DIW
		Project Name	Quantity	Unit	Est.Cost (K.Riels)			
31701	Suong	Woman and children focal point forum	2	day	0	Department of Women		<input type="checkbox"/>
31701	Suong	Gender	1	training	0	Department of Agriculture Forestry and Fisheries		<input type="checkbox"/>
31701	Suong	Women & Children FP strengthening	1	training	0	Department of Women		<input checked="" type="checkbox"/>

### 8.2.2 Temporary Agreements for 2009 as per DIW 2008 for Commune: Vihear Luong

Commune GIS	Commune	Temporary Agreements				Supporter	Funding Source	Listed in CIP befor DIW
		Project Name	Quantity	Unit	Est.Cost (K.Riels)			
Economic								
31702	Vihear Luong	Mushroom growing training	1	training	0	Department of Labor and Vocational Training		<input type="checkbox"/>
31702	Vihear Luong	Animal vaccination request	1000	Head	0	Department of Agriculture Forestry and Fisheries		✓
31702	Vihear Luong	Mushroom growing training	1	demo	0	Department of Agriculture Forestry and Fisheries		✓
31702	Vihear Luong	Sow pig raising training	1	demo	0	Department of Agriculture Forestry and Fisheries		<input type="checkbox"/>
31702	Vihear Luong	Pig raising training	2	demo	0	Department of Agriculture Forestry and Fisheries		<input type="checkbox"/>
31702	Vihear Luong	IPM training, vegetable	2	demo	0	Department of Agriculture Forestry and Fisheries		<input type="checkbox"/>
31702	Vihear Luong	Rice field demonstration	1	demo	0	Department of Agriculture Forestry and Fisheries		✓
Social								
31702	Vihear Luong	Transfer the blind for medical check and treatment	0	time	0	Association for Blind of Cambodia		<input type="checkbox"/>
31702	Vihear Luong	Transfer blind children, 8-14 years old to blind school	0	time	0	Association for Blind of Cambodia		<input type="checkbox"/>
31702	Vihear Luong	Zero interest rate cash credit for blind people	0	time	0	Association for Blind of Cambodia		<input type="checkbox"/>
31702	Vihear	Patients home based care	0	time	17760	New Farmer		<input type="checkbox"/>

District Data Book 2009: District Profile

Commune GIS	Commune	Temporary Agreements				Supporter	Funding Source	Listed in CIP befor DIW
		Project Name	Quantity	Unit	Est.Cost (K.Riels)			
	Luong							
31702	Vihear Luong	HIV/AIDS general health education to children 5-12 and 12-20 age group	0	time	0	World Relief - Cambodia		<input type="checkbox"/>
31702	Vihear Luong	Outdoor consultation and curing services	0	time	0	Department of Health		<input type="checkbox"/>
31702	Vihear Luong	Vaccination for all types of diseases	0	time	0	Department of Health		<input type="checkbox"/>
31702	Vihear Luong	Birth spacing medicine for women	0	time	0	Department of Health		<input type="checkbox"/>
31702	Vihear Luong	Second antenatal care service provision	0	time	0	Department of Health		<input type="checkbox"/>
31702	Vihear Luong	Vitamin A supply to 6-59 months old children	0	time	0	Department of Health		<input type="checkbox"/>
31702	Vihear Luong	Ferrous medicine supply to pregnant women	0	time	0	Department of Health		<input type="checkbox"/>
31702	Vihear Luong	Ferrous medicine 48 days supply during postnatal period	0	time	0	Department of Health		<input type="checkbox"/>
31702	Vihear Luong	Equity fund support	0	time	0	Department of Health		<input type="checkbox"/>
<b>NREM</b>								
31702	Vihear Luong	Biogas cooking project	5	place	0	Department of Agriculture Forestry and Fisheries		✓
<b>Administration and Security</b>								
31702	Vihear Luong	Land use map provision	0	time	0	Department of Land Management, Urban Planning & Construction		<input type="checkbox"/>
31702	Vihear Luong	Master plan	0	time	0	Department of Land Management, Urban Planning & Construction		<input type="checkbox"/>
<b>Gender</b>								
31702	Vihear Luong	Female councilors and WCFPs capacity strengthening forum	1	time	0	Department of Women		<input type="checkbox"/>
31702	Vihear Luong	WCFPs capacity strengthening training	1	training	0	Department of Women		<input type="checkbox"/>

**Source:** CDPD, District Level Detail TA resulting from DIW



**8.3 Outputs, estimated and actual costs of C/S Fund Projects between 2005 and 2008, by Commune**

Commune	Project Type	Budget Year	Output		Quantity	Unit	Unit Cost MR	
			Description	Type			Estimate	Actual
Suong	Irrigation	2005	Canal	Repair	0.932	Km	60.70	58.72
Suong	Rural Transport	2006	Earth road	Repair	2.11	Km	57.79	57.87
Suong	Rural Transport	2007	Earth road	Repair	4.395	Km	58.83	55.58
Suong	Irrigation	2008		Repair	0		0	14.2008
Suong	Rural Transport	2008	Earth road	Repair	2.47	Km	62.36	59.50
Vihear Luong	Irrigation	2005	Canal	Repair	1.49	Km	41.04	36.95
Vihear Luong	Rural Transport	2006	Earth road	Repair	3.39	Km	44.04	41.36
Vihear Luong	Rural Transport	2007	Earth road	Repair	4.069	Km	45.37	45.38
Vihear Luong	Rural Transport	2008	Earth road	Repair	3.05	Km	52.08	51.24

*Source: PID***8.4 Total Expenditure on C/S Fund Projects by sector and commune between 2005 and 2008**

Sector	Total Cost in Million Riels	
	Suong	Vihear Luong
Irrigation	72.92	36.95
Rural Transport	172.95	137.97

*Source: PID*

**8.5 Actual 2009 C/S Fund projects by Commune**

Commune	Project Type	Project Output		Quantity	Unit	Fund Source (Riels)		
		Description	Type			Total	C/S	Local Contribution
Sangkat Suong	Rural Transport	Earth road	Repair	1.574	km	77,212,500	77,212,500	0
Sangkat Suong	Rural Transport	Earth road	Repair	0.507	km	77,212,500	77,212,500	0
Sangkat Suong	Rural Transport	Earth road	Repair	0.196	km	77,212,500	77,212,500	0
Sangkat Suong	Rural Transport	Earth road	Repair	0.1	km	77,212,500	77,212,500	0
Sangkat Suong	Rural Transport	Earth road	Repair	1.574	km	77,212,500	77,212,500	0
Sangkat Suong	Rural Transport	Earth road	Repair	1.194	km	77,212,500	77,212,500	0
Sangkat Suong	Rural Transport	Earth road	Repair	0.604	km	77,212,500	77,212,500	0
Sangkat Suong	Rural Transport	Earth road	Repair	0.196	km	77,212,500	77,212,500	0
Sangkat Vihear Luong	Rural Transport	Earth road	Repair	0.5	km	54,303,400	54,303,400	0
Sangkat Vihear Luong	Rural Transport	Earth road	Repair	0.25	km	54,303,400	54,303,400	0
Sangkat Vihear Luong	Rural Transport	Earth road	Repair	0.25	km	54,303,400	54,303,400	0
Sangkat Vihear Luong	Rural Transport	Earth road	Repair	0.53	km	54,303,400	54,303,400	0
Sangkat Vihear Luong	Rural Transport	Earth road	Repair	0.27	km	54,303,400	54,303,400	0
Sangkat Vihear Luong	Rural Transport	Earth road	Repair	0.38	km	54,303,400	54,303,400	0
Sangkat Vihear Luong	Rural Transport	Earth road	Repair	0.24	km	54,303,400	54,303,400	0
Sangkat Vihear Luong	Rural Transport	Earth road	Repair	0.3	km	54,303,400	54,303,400	0
Sangkat Vihear Luong	Rural Transport	Earth road	Repair	0.724	km	54,303,400	54,303,400	0

**Source:** PID

## 9 District level Projects from 2006 to 2009

District Initiative Projects (DIPs) are funded by Danida, DFID and PSDD (UNDP, DFID and SIDA).

### **Funding for 2006-2008**

Between 2006 and 2008 there were 14 provinces funded by PSDD and 10 by Danida and DFID. The list of provinces and who funded these is below

#### *Danida and DFID funded DIPs:*

Kampong Cham	Kampong Speu	Koh Kong	Kratie	Monduliri
Pursat	Ratanakiri	Siem Reap	Sihanoukville	Kep

#### *PSDD funded DIPs:*

Banteay Meanchey	Battambang	Kampong Chhnang	Kandal	Phnom Penh
Prey Veng	Svay Rieng	Takeo	Kampong Thom	Preah Vihear
Stung Treng	Kampot	Oddar Meanchey	Pailin	

### **Funding for 2009**

In 2009 there was a change to the number of provinces funded by the two streams. Danida and DFID were still funding the same 10 provinces they had been funding the previous three years, but two more provinces were added *Kampong Thom and Kampot*. Now PSDD funds 12 provinces and Danida and DFID fund 12.

## **9.1 District Initiative Infrastructure Projects from 2006 to 2009**

### **9.1.1 District Initiative Infrastructure Projects for 2006 to 2008**

*No District Initiative Infrastructure Projects were implemented in this district for 2006-2008*

### **9.1.2 District Initiative Infrastructure Projects in 2009**

*No District Initiative Infrastructure Projects have been implemented in this district for 2009*

## **9.2 District Initiative Service Projects from 2006 to 2009**

### **9.2.1 District Initiative Service Projects for 2006 to 2008**

*No District Initiative Service Projects were implemented in this district for 2006-2008*

### 9.2.2 District Initiative Service Projects in 2009

*No District Initiative Service Projects have been implemented in this district for 2009*

## 9.3 Inter Commune Council Projects in 2008 and 2009

### 9.3.1 ICC Projects in 2008

Districts	Project Location	Beneficiary Commune/ Sangkat	Outputs	Project Size	Unit	Contract Cost	Fund Sources	
							ICC Fund	Community
Tboung Khmum	Thma Pech, Peam Chileang	Thma Pech, Peam Chileang	Laterite road upgrade	5,468	Metre	\$2,900.00	\$2,700.00	\$200.00
			Road culvert construction	1	Unit			
Total for Tboung Khmum						\$2,900.00	\$2,700.00	\$200.00
Chamkar Leu	Lvea Leu, Ta Prok	Lvea Leu, Ta Prok	Laterite road	6,800	Metre	\$36,500.00	\$3,500.00	\$100.00
			Single road culvert construction	8	Unit			
Total for Chamkar Leu						\$36,500.00	\$3,500.00	\$100.00
Prey Chhor	Prey Chhor, Khvethom	Prey Chhor, Khvethom	Tunle Om reervoir restoration	37,500	Cubic Metre	\$29,424.00	\$29,354.00	\$70.00
Total for Prey Chhor						\$29,424.00	\$29,354.00	\$70.00
Srey Santhor	Prey Po, Phteah Kandal	Prey Po, Phteah Kandal	Pond restoration (Boeng Krapeu)	13,500	Cubic Metre	\$29,200.00	\$29,100.00	\$100.00
Total for Srey Santhor						\$29,200.00	\$29,100.00	\$100.00
O Reang Ov	Kong Chey, Tuol Sophy	Kong Chey, Tuol Sophy	Laterite road upgrade	4,100	Metre	\$30,000.00	\$29,850.00	\$150.00
			Road culvert construction	2	Unit			
			Box-culvert	1	Unit			
Total for O Reang Ov						\$30,000.00	\$29,850.00	\$150.00
KampongSiem	KeanChrey	KeanChrey,RoAng	School Building	3	Room	\$29,598.00	\$29,448.00	\$150.00
			Furnitures	3	Set			
Total for Kampong Siem						\$29,598.00	\$29,448.00	\$150.00
Total for Kampong Cham						\$157,622.00	\$123,952.00	\$770.00

### 9.3.2 ICC Projects in 2009

Districts	Project Location	Beneficiary Commune/ Sangkat	Outputs	Project Size	Unit	Contract Cost	Fund Sources	
							ICC Fund	Community
Tbong Khmum	Thmar Pich, Peam Chi leang	Thmar Pich, Peam Chi Leang	Laterite Road Upgrade New Culvert			Contract not yet signed		
Total for Tbong Khmum						\$0.00	\$0.00	\$0.00
Chamkar Leu	Lvea Leu,Spour	Lvea Leu,Spour	Canal Rehabilitation	4,500	Meter	\$29,025.00	\$28,925.00	\$100.00
Total for Chamkar Leu						\$29,025.00	\$28,925.00	\$100.00
Prey Chhor	Prey Chhor, Sosen	Prey Chhor,Sosen	Laterite road upgrade Single Culvert	6,530 3	Meter place	\$40,075.00	\$39,985.00	\$90.00
Total for Prey Chhor						\$40,075.00	\$39,985.00	\$90.00
Srey Santhor	Project bidding process not complete and contract not yet signed							
Total for Srey Santhor						\$0.00	\$0.00	\$0.00
Ou Reang Ov	Kong Chey, Ampil Ta Pok	Kong Chey, Ampil Ta Pok	Canal Rehabilitation	3,500	Meter	\$14,000.00	\$13,900.00	\$100.00
	Chak, Kong Chey, Damril	Chak, Kong Chey, Damril	Bio-gas Kiln Installation	40	Place	\$4,000.00	\$4,000.00	
Total for Ou Reang Ov						\$14,000.00	\$13,900.00	\$100.00
Kampong Siem	Kaoh Roka & Kokor	Kaoh Roka & Kokor	Earth road upgrade Single Culvert	5,000 5	Meter place	\$29,480.00	\$29,380.00	\$100.00
Total for Kampong Siem						\$29,480.00	\$29,380.00	\$100.00
Total for Kampong Cham						\$112,580.00	\$112,190.00	\$390.00

**Source:** ICC project, Ministry of Interior (DoLA), -UNDP project for Local Governance – DDLG

## **9.4 Other Projects in 2008 and 2009**

### **9.4.1 RPRP**

*There are no RPRP projects being implemented in this district or province at this time. The RPRP is only being implemented in Svay Rieng and Prey Veng*

#### **9.4.1.1 RPRP Projects from 2006 to 2008**

*No RPRP projects in this district at this time*

#### **9.4.1.2 RPRP Projects in 2009**

*No RPRP projects in this district at this time*

### **9.4.2 Seth Korma**

#### **9.4.2.1 Seth Koma 2007**

*There are no Seth Korma projects being implemented in this district or province at this time.*

**Source:** UNICEF

#### **9.4.2.2 Seth Koma 2008**

*There are no Seth Korma projects being implemented in this district or province at this time.*

**Source:** UNICEF

#### **9.4.2.3 Seth Koma 2009**

*There are no Seth Korma projects being implemented in this district or province at this time.*

**Source:** UNICEF

## **SECTION D: SERVICES AND ORGANIZATIONS**





## 10 Infrastructure

### 10.1 Length of and Expenditure on Roads in 2008, by District

Roads	KPC	Batheay	Chamkar Leu	Cheung Prey	Dambee	Kampong Cham	Kampong Siem	Kang Meas	Kosh Sotin
Length of paved road in the district	609	35	61	33	57	40	50	15	1
Length of unpaved roads in the district	2,677	180	12	176	239	25	219	144	135
Amount spent on construction of roads in 2008 (\$)	2,208,588	5	0	0	754,444	0	0	1,218,000	0
Amount spent on repair and rehabilitation of roads in 2008 (\$)	2,426,708	142,402	99,541	1,147,705	0	55,903	117,000	242,000	0

Continue...

Roads	Kroch Chhmar	Memut	Oraing Ov	Ponhea Kreak	Prey Chhor	Srey Santhor	Steung Trang	Tbong Khmom	Suong
Length of paved road in the district	10	52	20	71	50	0	18	87	9
Length of unpaved roads in the district	32	324	130	212	172	149	189	257	82
Amount spent on construction of roads in 2008 (\$)	119,256	0	0	0	0	0	98,183	0	18,700
Amount spent on repair and rehabilitation of roads in 2008 (\$)	23,851	165,225	96,832	78,133	35,440	70,000	3,362	121,629	27,685

**Note 1:** Please note that these data are not necessarily complete or correct. The data are derived from government agencies at provincial and district level which used different recording systems, did not always have complete data or were, sometimes, less than willing to share their data.

**Note 2:** Please be aware that these data are incomplete due to the fact that the amounts for the construction, repair and rehabilitation recorded reflect only funds provided by the government, not the contributions by any other parties.

**10.2 Scale of and Expenditure on Irrigation in 2008, by District**

Irrigation	KPC	Batheay	Chamkar Leu	Cheung Prey	Dambee	Kampong Cham	Kampong Siem	Kang Meas	Kosh Sotin
Number of irrigation schemes operating in 2008	211	17	1	8	4	0	55	40	n/a
Total nr of hectares under irrigation in dry season 2008	47,078	15,800	106	n/a	5,000	-	4,044	5,445	n/a
Total funds spent in 2008 on construction of irrigation systems (\$)	2,674,228	-	n/a	45,000	20,010	-	-	-	n/a
Total funds spent in 2008 on rehabilitation/repair of irrigation systems (\$)	787,582	44,307	n/a	57,525	-	-	60,500	99,871	2,848
Total funds spent in 2008 on operation and maintenance (\$)	41,581	-	n/a	-	-	-	-	9,000	-

Continue...

Irrigation	Kroch Chhmar	Memut	Oraing Ov	Ponhea Kreak	Prey Chhor	Srey Santhor	Steung Trang	Tbong Khmom	Suong
Number of irrigation schemes operating in 2008	19	1	2	12	2	7	7	14	22
Total nr of hectares under irrigation in dry season 2008	4,685	500	n/a	n/a	2,524	3,000	2,527	3,447	n/a
Total funds spent in 2008 on construction of irrigation systems (\$)	1,850,000	-	4,500	n/a	2	-	751,151	-	3,565
Total funds spent in 2008 on rehabilitation/repair of irrigation systems (\$)	2,000	-	-	38,797	17	448,000	3,550	30,167	-
Total funds spent in 2008 on operation and maintenance (\$)	-	30,000	-	n/a	n/a	-	2,581	-	-

**Note 1:** Please note that these data are not necessarily complete or correct. The data are derived from government agencies at provincial and district level which used different recording systems, did not always have complete data or were, sometimes, less than willing to share their data.

**Note 2:** Please be aware that the data above are incomplete as these only reflect funds provided by the government, not the contributions by farmers or other parties.

**10.3 Power Supply in 2008, by District**

Electricity	KPC	Batheay	Chamkar Leu	Cheung Prey	Dambee	Kampong Cham	Kampong Siem	Kang Meas	Kosh Sotin
Total number of electricity connections to households	88,626	1,553	5,250	650	155	7,000	3,325	640	330
Total number of electricity connections to agencies, companies, organizations	114	10	8	3	1	n/a	6	4	3
Total volume in KWh of electricity consumed last in 2008	45,874,095	306,832	756,000	356,213	3,600	12,716,205	829,800	31,150	23,040
Total amount collected from users for consumed electricity (\$)	8,750,555	160,748	450,000	183,379	2,880	2,988,308	1,950,003	12,925	19,962
Per capita electricity consumption in 2008 in Kwh	257,462	197	144	548,02	30	28,946	2,495	4,867	96

Continue...

Electricity	Kroch Chhmar	Memut	Oraing Ov	Ponhea Kreak	Prey Chhor	Srey Santhor	Steung Trang	Tbong Khmom	Suong
Total number of electricity connections to households	410	53,644	928	3,792	1,292	800	2,449	3,449	2,959
Total number of electricity connections to agencies, companies, organizations	1	n/a	2	36	5	5	8	11	11
Total volume in KWh of electricity consumed last in 2008	2,870	8,690,699	181,120	18,324,406	374,400	48	25,548	1,015,964	2,236,200
Total amount collected from users for consumed electricity (\$)	2,152	999,430	94,500	342,275	193,380	31,600	387,948	299,621	631,444
Per capita electricity consumption in 2008 in Kwh	7	180	39	261	219,205	60	300	318	317

**Note 1:** Please note that these data are not necessarily complete or correct. The data are derived from government agencies at provincial and district level which used different recording systems, did not always have complete data or were, sometimes, less than willing to share their data.

**Note 2:** These data only record electricity provided by electricity companies and does not include homes powered by generators or batteries (for this information see Section B: General Profile, Part 1: General Information; table 1.3.1 and chart 1.3.4).

**Note 3:** In most provinces electricity is only provided through town-based networks

**Note 4:** Per capita consumption is calculated by dividing the total volume of electricity produced in 2008 by the number of people living in each district as per the 2008 census (for the provincial data it is calculated against the number of people living in the province)

## 11 Health Facilities

Please note that the Operational District (health) boundaries are different to the administrative district boundaries. Therefore the data provided here shows the facilities, staff, NGOs etc in each Operational District within the province NOT the administrative district.

### Acronyms

<b>Com Cov</b>	Commune Covered	<b>MW2</b>	Secondary Midwives
<b>CPA</b>	Complementary Package of Activities	<b>NU1</b>	Primary Nurse
<b>Dr</b>	Doctor	<b>NU2</b>	Secondary Nurse
<b>FDH</b>	Former District Hospital	<b>OD</b>	Operational District
<b>HC</b>	Health Center	<b>Others</b>	Other Staff
<b>HC (NB)</b>	Health Center no building	<b>PHD</b>	Provincial Health Department
<b>HP</b>	Health Post	<b>Pop 04-05</b>	Population Covered 2004 or 2005
<b>MA</b>	Medical Assistant	<b>RH</b>	Referral Hospital
<b>MPA</b>	Minimum Package of Activities	<b>Vil Cov</b>	Village Covered
<b>MW1</b>	Primary Midwives	<b>VIL-HC</b>	Distance from Village to Health Center

### 11.1 Health Facilities in the Province, by Operational District

Kompong Cham	OD	RH	HC	HP
Chamkar Leu - Stueng Trang	1	1	13	
Choeung Prey - Batheay	1	1	14	
Kampong Cham - Kampong Siem	1	1	22	
Kroch Chhmar - Stueng Trang	1	1	10	
Memut	1	1	10	
O Reang Ov - Kaoh Soutin	1	1	8	
Ponhea Krek - Dombae	1	1	16	
Prey Chhor - Kang Meas	1	1	15	
Srei Santhor - Kang Meas	1	1	13	
Tbong Khmum - Kroch Chhmar	1	1	14	
<b>Total</b>	<b>10</b>	<b>10</b>	<b>135</b>	<b>0</b>

## 11.2 Health Facilities and Staff in the province, by Operational District

This table shows health facilities, staff and coverage of health facilities in each operational district.

No	Facility Name	Type	Class	Dr	Ma	Nu2	Nu1	Mw2	Mw1	Others	Com Cov	Vil Cov	Pop. 04-05
<b>Chamkar Leu - Stueng Trang</b>													
1	Bos Khnaor	HC	MPA	0	1	3	0	1	0	1	1	5	11,987
2	Chamkar Andoung	HC(NB)	None	0	0	1	0	1	0	0	1	8	6,228
3	Cheyyou	HC(NB)	MPA	0	0	2	0	1	1	1	1	5	14,140
4	Dang Kdar	HC(NB)	MPA	0	0	0	2	1	0	5	2	19	18,197
5	Daun Thi	HC	MPA	0	0	2	0	0	1	1	1	5	9,224
6	Lvea Leu	HC(NB)	MPA	0	0	1	0	0	2	1	1	7	7,590
7	Me Sar Chrey	HC	MPA	0	0	2	2	1	0	0	1	5	12,411
8	Soupheas	HC(NB)	MPA	0	0	0	1	0	0	0	1	7	10,704
9	Spueu	HC	MPA	0	0	3	0	0	1	2	1	8	14,908
10	Svay Teab	HC	MPA	0	0	1	1	1	1	0	1	7	11,905
11	Ta Ong	HC	MPA	0	0	2	0	1	1	0	1	8	10,395
12	Ta Prok	HC(NB)	MPA	0	0	2	0	0	1	1	1	6	6,256
<b>Total:</b>				<b>0</b>	<b>1</b>	<b>19</b>	<b>6</b>	<b>7</b>	<b>8</b>	<b>12</b>	<b>13</b>	<b>90</b>	<b>133,945</b>
<b>Choeung Prey - Batheay</b>													
1	Tang Krang	HC	MPA	0	0	2	1	1	0	1	1	7	10,330
2	Batheay	FDH	CPA+MI	0	1	2	3	1	1	1	1	6	12,673
3	Cheung Chhnok	HC	MPA	0	0	1	3	1	1	0	3	17	21,537
4	Cheung Prey	HC	MPA	0	0	3	1	0	1	1	1	6	7,322
5	Daun Dom	HC	MPA	0	0	3	1	0	2	0	3	8	11,245
6	Khnor Dambang	HC	MPA	0	0	1	1	0	1	1	3	10	17,492
7	Ph'av	HC	MPA	0	1	2	1	1	2	0	2	11	13,188
8	Pring Chrum	HC	MPA	0	0	1	0	0	0	0	3	9	11,180
9	Sambour	HC(NB)	MPA	0	0	0	2	0	1	0	1	7	11,868
10	Sampong Chey	HC	MPA	0	0	0	2	0	1	0	1	11	13,810
11	Sandaek	HC	MPA	0	0	2	2	0	1	0	2	16	19,574
12	S'ang	HC	MPA	0	0	1	3	0	0	0	2	12	6,526
13	Sdaeung Chey	HC	MPA	0	1	0	3	0	1	2	3	14	13,351
14	Skon	HC	MPA	0	0	3	0	0	1	0	3	10	11,958
<b>Total:</b>				<b>0</b>	<b>3</b>	<b>21</b>	<b>23</b>	<b>4</b>	<b>13</b>	<b>6</b>	<b>29</b>	<b>144</b>	<b>182,054</b>
<b>Kampong Cham - Kampong Siem</b>													

District Data Book 2009: District Profile

No	Facility Name	Type	Class	Dr	Ma	Nu2	Nu1	Mw2	Mw1	Others	Com Cov	Vil Cov	Pop. 04-05
1	Tumnob	HC	MPA	0	0	1	1	0	2	0	2	17	15,418
2	Ampil	HC	MPA	1	0	3	2	2	1	0	2	14	17,679
3	Boeng Kok	HC	MPA	1	0	2	4	4	1	0	2	16	15,623
4	Han Chey	HC	MPA	0	0	2	2	0	1	2	2	8	10,409
5	Kampong Reab	HC	MPA	0	0	3	0	0	3	0	1	8	8,520
6	Kien Chrey	HC	MPA	1	0	3	0	1	0	1	2	12	10,074
7	Koh Mitt	HC(NB)	CPA+MI	0	0	2	3	2	0	0	1	9	7,736
8	Koh Roka	HC	MPA	0	0	2	3	0	1	0	3	15	15,131
9	Koh Samraong	HC	MPA	0	0	2	0	1	1	0	2	9	7,784
10	Koh Soutin	HC	MPA	0	1	1	1	0	0	0	1	14	12,809
11	Krala	HC	MPA	0	0	1	4	2	1	0	2	20	16,254
12	Lve	HC	MPA	0	0	3	1	0	1	0	1	10	9,180
13	Moha Khnhoung	HC	MPA	0	0	3	1	0	1	0	1	9	8,634
14	Peam Chileang	HC	MPA	1	0	2	4	0	0	0	2	22	16,670
15	Peam Prathnuoh	FDH	CPA+MI	0	1	3	3	1	1	0	1	13	11,847
16	Preaek Kak	FDH	CPA+MI	0	4	1	7	2	0	2	1	12	16,236
17	Preaek Ta Nong	HC	MPA	0	0	1	2	0	1	0	1	13	10,408
18	Sambuor Meas	HC	MPA	0	0	4	0	2	1	0	1	9	12,907
19	Tonle Bet	HC(NB)	MPA	0	0	4	2	1	3	0	2	24	20,877
20	Trean	HC	MPA	0	0	2	0	0	2	0	2	16	14,289
21	Tuol Preah Khleang	HC	MPA	0	0	2	4	0	2	1	2	11	15,450
22	Veal Vong	HC	MPA	0	0	3	0	3	0	0	1	6	15,177
<b>Total:</b>				<b>4</b>	<b>6</b>	<b>50</b>	<b>44</b>	<b>21</b>	<b>23</b>	<b>6</b>	<b>35</b>	<b>287</b>	<b>289,112</b>
<b>Kroch Chhmar - Stueng Trang</b>													
1	Vihear Thum	HC	MPA	0	0	2	3	1	0	0	1	9	6,553
2	Areaks Tnaot	HC(NB)	None	1	0	0	1	0	0	0	2	9	9,671
3	Chumnik	HC(NB)	None	0	0	4	2	1	0	0	2	5	12,747
4	Kampong Treas	HC	MPA	0	0	6	1	0	0	1	2	10	12,600
5	Khpob Ta Nguon	HC(NB)	None	0	0	4	1	1	0	1	2	9	10,518
6	Peam Koh Sna	HC	MPA	0	0	2	2	0	0	0	1	9	11,412
7	Peus Pir	HC	MPA	0	0	2	3	0	0	0	2	6	8,610
8	Praches Kandal	HC	MPA	0	0	3	0	1	0	0	2	8	10,276
9	Preaek A Chi	HC(NB)	None	0	0	2	0	0	0	0	2	12	13,422
10	Roka Khnaor	HC(NB)	None	0	0	2	2	0	0	0	2	8	12,209

District Data Book 2009: District Profile

No	Facility Name	Type	Class	Dr	Ma	Nu2	Nu1	Mw2	Mw1	Others	Com Cov	Vil Cov	Pop. 04-05
<b>Total:</b>				<b>1</b>	<b>0</b>	<b>27</b>	<b>15</b>	<b>4</b>	<b>0</b>	<b>2</b>	<b>18</b>	<b>85</b>	<b>108,018</b>
<b>Memut</b>													
1	Svay Khleang	HC(NB)	None	0	0	2	0	0	1	0	2	7	9,753
2	Chan Mul	HC	MPA	0	0	0	1	0	0	0	3	22	11,029
3	Choam Kravien	HC	None+MI	0	0	1	1	0	0	0	1	16	7,280
4	Choam Triek	HC	MPA	0	0	2	3	1	0	0	2	27	15,945
5	Dar	HC	MPA	0	0	3	0	0	1	0	1	14	13,380
6	Kampoan	HC	MPA	0	0	2	2	0	0	0	2	17	18,256
7	Memot	HC	MPA	0	0	1	3	0	2	0	2	13	14,047
8	Rumchek	HC	None+MI	0	0	1	1	0	0	0	1	9	7,091
9	Samraong	HC	MPA	0	0	0	2	0	2	0	4	18	14,739
10	Sla	HC	MPA	0	0	3	2	0	0	0	3	15	9,319
<b>Total:</b>				<b>0</b>	<b>0</b>	<b>15</b>	<b>15</b>	<b>1</b>	<b>6</b>	<b>0</b>	<b>21</b>	<b>158</b>	<b>120,839</b>
<b>O Reang Ov - Kaoh Soutin</b>													
1	Thma Totueng	HC	MPA	0	0	1	2	0	0	0	3	23	12,817
2	Ampil Ta Pok	HC(NB)	MPA	0	0	1	1	1	0	1	1	19	11,082
3	Chak	HC	MPA	0	0	1	4	0	0	0	2	20	13,208
4	Damrel	HC(NB)	None	0	0	0	1	0	0	0	1	20	9,130
5	Mien	HC	MPA	0	0	3	2	0	1	0	1	14	11,088
6	Pongro-Moha Leap	HC	MPA	0	0	6	1	0	1	1	2	18	12,172
7	Preah Theat	HC(NB)	None	0	0	0	0	0	2	0	1	18	11,206
8	Srae Spey	HC	MPA	0	0	2	1	1	0	2	5	20	14,519
<b>Total:</b>				<b>0</b>	<b>0</b>	<b>14</b>	<b>12</b>	<b>2</b>	<b>4</b>	<b>4</b>	<b>16</b>	<b>152</b>	<b>95,222</b>
<b>Ponhea Krek - Dombae</b>													
1	Thnal Kaeng	HC	MPA	0	0	3	0	0	1	0	2	23	12,248
2	Banghaeur Khlaeng	HC	None+MI	0	0	0	1	1	1	0	3	9	10,358
3	Chey Nikom	HC	None+MI	0	0	2	0	0	0	0	1	8	6,950
4	Chi Peang	HC	MPA	0	0	2	1	0	1	1	1	10	13,103
5	Chong Cheach	FDH	None+MI	0	0	3	0	0	0	0	2	16	30,111
6	Dambae	HC	MPA	0	0	1	1	0	1	1	3	17	13,797
7	Daun Tei	HC	MPA	0	0	1	1	1	0	0	1	17	11,125
8	Kandaol Chrum	HC	MPA	0	0	3	1	1	1	0	1	17	12,028
9	Kaong Kang	HC	MPA	0	0	2	0	0	0	0	2	17	15,341
10	Kraek I	HC	MPA	0	0	2	0	0	0	1	1	15	16,795

District Data Book 2009: District Profile

No	Facility Name	Type	Class	Dr	Ma	Nu2	Nu1	Mw2	Mw1	Others	Com Cov	Vil Cov	Pop. 04-05
11	Ponley	HC	MPA	0	0	2	0	0	0	0	2	17	10,313
12	Popel	HC	None+MI	0	0	1	2	0	0	1	1	7	6,524
13	Seda	HC	None+MI	0	0	2	0	0	0	0	2	18	13,197
14	Ta Am	HC	None+MI	0	0	1	0	0	0	0	1	10	8,080
15	Trapeang Pring	HC	MPA	0	0	2	0	0	0	0	1	14	17,021
16	Tuek Chrov	HC	None+MI	0	0	1	1	0	1	2	2	14	16,021
<b>Total:</b>				<b>0</b>	<b>0</b>	<b>28</b>	<b>8</b>	<b>3</b>	<b>6</b>	<b>6</b>	<b>26</b>	<b>229</b>	<b>213,012</b>
<b>Prey Chhor - Kang Meas</b>													
1	Veal Mlu	HC	None+MI	0	0	0	1	0	1	0	3	10	9,379
2	Angkor Ban	HC	MPA	0	0	3	1	1	1	0	2	11	13,435
3	Baray	HC	MPA	0	0	2	0	2	0	1	1	13	9,381
4	Chrey Vien	HC	MPA	0	0	2	1	1	0	0	1	18	15,850
5	Kor	HC	MPA	0	0	3	1	2	0	0	2	13	13,708
6	Krouch	HC	MPA	0	1	1	2	0	2	0	2	18	14,568
7	Lvea	HC	MPA	0	0	2	2	1	0	0	2	14	10,276
8	Mien	HC	MPA	0	0	2	0	0	1	0	1	19	12,741
9	Peam Chi Kang	FDH	MPA	1	0	2	4	1	0	0	2	11	13,962
10	Preaek Krabau	HC	MPA	0	0	4	0	1	1	0	2	11	4,664
11	Sour Kong	HC	MPA	0	0	2	0	1	1	0	1	11	10,884
12	Sour Saen	HC	MPA	0	0	2	1	0	0	0	2	12	8,550
13	Srangae-Samraong	HC	MPA	0	0	2	1	1	0	0	2	15	10,898
14	Thma Pun	HC	MPA	0	0	4	0	3	0	0	3	12	12,479
15	Tong Rong	HC	MPA	0	0	3	2	1	0	0	2	18	11,851
<b>Total:</b>				<b>1</b>	<b>1</b>	<b>34</b>	<b>16</b>	<b>15</b>	<b>7</b>	<b>1</b>	<b>28</b>	<b>206</b>	<b>172,626</b>
<b>Srei Santhor - Kang Meas</b>													
1	Trapeang Preah	HC	MPA	0	0	2	1	1	1	0	1	24	15,049
2	Baray	HC(NB)	None	0	0	0	3	0	0	0	1	4	8,973
3	Khchau	HC(NB)	None	0	0	0	0	0	1	0	2	11	11,286
4	Mean Chey	HC	MPA	1	1	1	2	1	0	0	2	9	11,024
5	Pram Yam	HC(NB)	None	0	0	0	3	0	0	0	1	4	6,079
6	Preaek Dambouk	HC(NB)	None	0	0	2	0	1	1	1	2	11	14,587
7	Preaek Pou	HC	MPA	0	0	1	1	1	1	1	2	12	17,286
8	Reay Pay	HC(NB)	None	0	0	2	0	1	0	0	2	10	12,436
9	Roka Ar	HC(NB)	None	0	0	2	0	0	1	0	2	16	16,092



District Data Book 2009: District Profile

No	Facility Name	Type	Class	Dr	Ma	Nu2	Nu1	Mw2	Mw1	Others	Com Cov	Vil Cov	Pop. 04-05
10	Sdau	HC	MPA	1	0	1	2	0	1	0	3	12	13,804
11	Svay Pou	HC	MPA	0	1	0	1	0	1	1	2	10	10,465
12	Svay Sach Phnum	HC(NB)	None	0	0	1	0	1	1	1	2	8	11,840
13	Svay Ta Noan(Preaek Rumdeng)	HC(NB)	MPA	0	1	2	1	1	1	0	2	18	18,970
<b>Total:</b>				<b>2</b>	<b>3</b>	<b>14</b>	<b>14</b>	<b>7</b>	<b>9</b>	<b>4</b>	<b>24</b>	<b>149</b>	<b>167,891</b>
<b>Tbong Khmum - Kroch Chhmar</b>													
1	Tong Tralach	HC(NB)	None	0	0	0	1	0	1	1	3	10	7,430
2	Anhchaeum	HC	MPA	0	0	1	2	1	1	0	1	22	11,971
3	Chhouk	HC(NB)	None	0	0	0	1	0	1	0	1	6	8,137
4	Chikor-Moung Rieng	HC	MPA	0	0	1	2	0	2	0	2	25	15,886
5	Chirou Pir	HC	MPA	0	0	1	3	1	2	0	1	12	11,987
6	Chob-Moung Rieng	HC	MPA	0	0	2	1	1	1	0	2	14	15,133
7	Kor-Lngieng	HC	MPA	0	0	0	3	0	1	0	2	25	18,931
8	Roka Pram Ti Mouy	HC	MPA	0	0	1	0	1	0	0	1	7	11,873
9	Roka Pram Ti Pir	HC	MPA	0	0	1	1	2	1	0	0	7	16,629
10	Sralab	HC	MPA	0	0	0	2	1	1	0	1	17	13,010
11	Suong Muoy	HC	MPA	0	0	0	1	2	2	0	1	8	13,539
12	Suong Pir	HC(NB)	None	0	0	0	1	1	1	0	3	8	10,009
13	Thma Pechr	HC	MPA	0	0	2	1	0	1	0	1	11	12,288
14	Tuol Snuol	HC(NB)	None	0	0	3	1	0	0	0	1	10	13,463
<b>Total:</b>				<b>0</b>	<b>0</b>	<b>12</b>	<b>20</b>	<b>10</b>	<b>15</b>	<b>1</b>	<b>20</b>	<b>182</b>	<b>180,286</b>
<b>Total All</b>				<b>8</b>	<b>14</b>	<b>234</b>	<b>173</b>	<b>74</b>	<b>91</b>	<b>42</b>	<b>230</b>	<b>1682</b>	<b>1,663,005</b>

Source: MEDiCAM – Infrastructure - ([http://www.medicam-cambodia.org/hsi/health\\_system/srch/index.asp?cboLcn=6&cmdSearch=Search&cboCHName=&cboType=](http://www.medicam-cambodia.org/hsi/health_system/srch/index.asp?cboLcn=6&cmdSearch=Search&cboCHName=&cboType=))

**11.3 Deliveries in 2007 in the Province, by Operational District**

<b>OD</b>	<b>Deliveries</b>	<b>Deliveries at home</b>		<b>Deliveries</b>	<b>Total deliveries</b>	<b>Total deliveries</b>
	<b>at HC</b>	<b>By Health Staff</b>	<b>ByTBAs</b>	<b>at RH</b>	<b>by Health Staff</b>	<b>by health staff and TBAs</b>
Chamkar Leu	627	619	672	296	1542	2214
Choeung Prey	929	998	1743	284	2211	3954
Kampong Cham	493	5741	1218	950	7184	8402
Kroch Chhmar	96	526	368	13	635	1003
Memut	389	472	2045	471	1332	3377
O Reang Ov	204	697	869	35	936	1805
Ponhea Krek	1747	1281	1758	282	3310	5068
Prey Chhor	809	1387	1077	138	2334	3411
Srei Santhor	59	1457	1587	148	1664	3251
Tbong Khmum	305	2108	1307	60	2473	3780
<i>Sub-total</i>	<i>5658</i>	<i>15286</i>	<i>12644</i>	<i>2677</i>	<i>23621</i>	<i>36265</i>

*Source: MoH, Annual Statistics 2007*

## 12 Education<sup>3</sup>

### 12.1 Schools, Classes, Students, Staff, for all levels, for 2007/2008 by District

District	Number of Schools	Disadv. Schools	Number of Classes	Classes in Pagoda	Enrollment		Repeaters		Teaching Staff		Non-Teaching Staff		Total Staff	
					Total	Girl	Total	Girl	Total	Female	Total	Female	Total	Female
Batheay	56	0	641	0	27,478	12,879	2,468	1,176	560	234	178	38	738	272
Chamkar Leu	58	3	595	0	25,470	12,292	2,089	868	529	237	139	41	668	278
Cheung Prey	54	0	542	0	21,365	9,950	1,757	770	407	145	115	20	522	165
Dambe	49	2	452	1	19,136	9,313	3,340	1,610	261	60	40	4	301	64
Kampong Cham	21	0	360	0	13,024	6,039	662	245	566	320	215	131	781	451
Kampong Siem	77	0	686	1	24,942	11,642	2,535	1,037	780	436	231	61	1,011	497
Kang Meas	78	1	610	2	24,405	11,318	1,791	747	637	345	165	41	802	386
Koh Sotin	46	0	413	0	17,060	7,801	1,800	713	383	144	103	24	486	168
Krauch Chhmar	68	1	505	34	20,088	9,468	1,467	613	383	158	89	14	472	172
Memot	113	17	759	0	33,484	16,181	3,368	1,515	524	168	77	11	601	179
O Raing Euv	48	3	461	0	19,917	9,362	1,804	776	384	151	116	21	500	172
Ponhea Krek	75	0	700	1	31,500	14,949	3,534	1,497	491	190	157	35	648	225
Prey Chhor	76	1	775	0	32,130	15,128	2,626	1,158	770	357	257	55	1,027	412
Srey Santhor	62	1	568	10	24,025	11,304	1,975	757	609	325	173	44	782	369
Steung Trang	62	1	627	7	27,690	13,500	2,245	1,146	537	235	68	14	605	249
Tbaung Khmum	117	4	1,102	9	46,653	22,306	2,736	1,192	1,020	464	281	62	1,301	526
<b>Whole Province</b>	1,060	34	9,796	65	408,367	193,432	36,197	15,820	8,841	3,969	2,404	616	11,245	4,585
- Urban Area	21	0	360	0	13,024	6,039	662	245	566	320	215	131	781	451
- Rural Area	1,039	34	9,436	65	395,343	187,393	35,535	15,575	8,275	3,649	2,189	485	10,464	4,134

<sup>3</sup> All the data for section 12 comes from the Ministry of Education, Youth and Sport (MoEYS)

**12.2 Characteristics of Schools and School Principals for 2007/2008 by Commune**

Commune	Number of Schools				2 - Shift	Floating	Schools	Attached	Schools Without			Characteristics of School Principals (Incharge)			
	Pre-Sch	Primary	College	Lycee	Schools	Schools	in Pagoda	Pre-Sch	Water Sup.	Latrine		Avg. Age	Avg. Service	U.Sec+ Ed.	Female
Suong	1	6	0	1	4	0	1	1	3	2		50.9	24.4	2	2
Vihear Luong	0	4	0	0	4	0	1	0	1	1		50.2	25.8	0	0

**12.3 Enrolment by Level of Education, 2006/2007 by Commune**

Commune	School	Pre school		Primary School		Lower Secondary School		Upper Secondary School		Enrolment	
		Total	Female	Total	Female	Total	Female	Total	Female	Total	Female
Suong	8	70	36	3673	1762	1968	953	1363	627	7074	3378
Vihear Luong	4	0	0	1554	727	0	0	0	0	1554	727

**12.4 Enrolment by Level of Education, 2007/2008 by Commune**

Commune	School	Pre school		Primary School		Lower Secondary School		Upper Secondary School		Enrolment	
		Total	Female	Total	Female	Total	Female	Total	Female	Total	Female
Suong	8	107	53	3495	1658	1884	943	1498	682	6984	3336
Vihear Luong	4	0	0	1380	645	0	0	0		1380	645

**12.5 Aspects of Enrolment for 2007/2008 by Commune**

Commune	% Repeaters (Total)			% Over-age Enrollment (Total)			% Repeaters (Girl)			% Over-age Enrollment (Girl)		
	Primary	L.Sec.	U.Sec.	Primary	L.Sec.	U.Sec.	Primary	L.Sec.	U.Sec.	Primary	L.Sec.	U.Sec.
Suong	6.1	4.3	1.7	14.0	25.6	28.9	5.6	3.9	1.0	11.4	20.1	19.6
Vihear Luong	9.8	0.0	0.0	18.4	0.0	0.0	9.0	0.0	0.0	15.8	0.0	0.0

**12.6 School Buildings for all schools in the District for 2007/2008, by Commune**

Commune	Total Number of		Concrete/Brick Structure		Wooden Structure		Bamboo Structure		New Buildings		Buildings Without Good		
	Buildings	Rooms	Buildings	Rooms	Buildings	Rooms	Buildings	Rooms	Repaired	Constructed	Floor	Roof	Wall
Suong	27	139	23	127	4	12	0	0	0	0	7	9	8
Vihear Luong	9	35	7	29	2	6	0	0	0	0	1	0	0

**12.7 Conditions of Classrooms and Existence of Separate School Office and Library, by Commune**

Commune	Number of Class rooms	Number of Classrooms			Classrooms Without Good			Number of Furniture needed				Schools with Separate	
		in Pagoda	New Repaired	New Constr.	Floor	Roof	Wall	Desks	Chairs	Black-board	Teacher Table	Office	Library
Suong	112	0	0	0	21	49	31	70	140	0	27	4	3
Vihear Luong	27	0	0	0	2	0	0	0	0	0	5	2	2

**12.8 Community Participation and Financing across all schools in the District for 2007/2008 by Commune**

Commune	Parent Association				Commu. Teachers	Teaching Monks	PAP Fund (Riel)		Number of Schools Obtaining Funds from				
	Exists	Held Meet	Total	Female			per Student	per School	Sch. Income	Community	Gvt. For building	Abroad	IOs/NGOs
Suong	8	7	8	1	0	0	11,866	10,388,322	0	0	1	0	0
Vihear Luong	4	4	8	0	0	0	7,181	2,789,750	0	0	0	0	0

**12.9 Percentage Student Flow Rates and Graduation by level 2006/2007, by Commune**

Commune	Primary Level (Grades 1-6)			Lower Secondary Level (Grades 7-9)			Upper Secondary Level (Grades 10-12)			Successful Candidates		
	Promotion	Repetition	Dropout	Promotion	Repetition	Dropout	Promotion	Repetition	Dropout	Grade 6	Grade 9	Grade 12
Suong	85.1	5.8	9.1	69.5	4.1	26.4	85.8	1.8	12.4	492	369	274
Vihear Luong	74.1	8.7	17.2	0.0	0.0	0.0	0.0	0.0	0.0	128	0	0

## 13 Staff and Resources at the District

*This chapter presents data from the District Information System, collected around the middle of 2009 unless otherwise specified.*

### 13.1 District Councillors elected in 2009

Name	Sex	Year of Birth	Function	Phone
ស៊ឹម ស៊ីថុវី	M	05-03-1948	Chairperson of The Council	011-857 713
គាត ហុង	M	26-05-1949	Councillor	012-670 906
ស៊ុក សាម	M	08-02-1956	Councillor	012-670 906
សោម ស៊ីណា	F	17-09-1981	Councillor	097-785 0595
ជាម អ៊ាង	M	12-02-1949	Councillor	011-855 143
សោម ប៊ុន	F	08-06-1952	Councillor	011-939 423
មូក សារី	M	05-01-1944	Councillor	
យ៉ាត សេងអាន	M	05-01-1946	Councillor	092-225 441
ទេព កង	M	29-04-1939	Councillor	011-898 468
អ៊ុច នៅ	M	13-11-1951	Councillor	012-255 957
ឆេង សុផល	M	05-04-1967	Councillor	012-685 031
គាំ សុខានី	M	13-04-1954	Councillor	
ស៊ុយ ឡេងសេងឡុង	M	09-10-1983	Councillor	090-404 017

### 13.2 Committees of the Council

*Please note at the time of producing the district data books the composition of the committees was not known for all district councils and therefore data were not available for 13.2.1, 13.2.2, 13.2.3.*

#### 13.2.1 Technical Facilitation Committee

#### 13.2.2 Women's and Children's Affairs Committee

#### 13.2.3 Procurement Committee

### 13.3 Board of Governors

Name	Sex	DoB	Function	Salary Level	Body	Phone
ជា សុខិន្ទ្រ	M	15-11-73	Municipality governor	ក.៣.១២	High Ranking Civil Servant	012-855 877
ជ័យ ពិសិដ្ឋ	M	05-07-57	Municipality deputy governor	ខ.២.៦	Medium Civil Servant	012-295 826
ស័ត សុម៉ាលី	F	05-04-62	Municipality deputy governor	គ.១.៥	Secretary	011-531 176
ជា ណារ៉ុន	M	12-02-80	Municipality deputy governor	គ.៣.១២	Secretary	012-603 007

### 13.4 Offices under Sala Krong, Sala Srok and Sala Khan

Office Name	Chief		Deputy Chief		No. of Staff				Office Area (m2)	No of vehicle (public or program)	
					State		Contract			vehicle	moto
	M	F	M	F	M	F	M	F			
District/ Khan Cabinet	0	0	0	0	0	0	0	0	0	0	0
Adminnistration Office	0	0	0	0	0	1	0	0	0	0	0
Economy Office	0	0	0	0	0	0	0	0	0	0	0
Social Affair Office	0	0	0	0	0	0	0	0	0	0	0

### 13.5 Municipality/District/Khan line offices

Office Name	Chief		Deputy Chief		No. of Staff				Office Area (m2)	No of vehicle (public or program)	
					State		Contract			vehicle	moto
	M	F	M	F	M	F	M	F			
Planning Office	1	0	0	1	0	0	0	0	0	0	0
Rural Development Office	0	0	1	0	0	1	0	0	0	0	0
Women Affairs Office	0	1	0	0	0	0	0	0	0	0	0
Environment Office	1	0	0	0	0	1	0	0	0	0	0
Education Office	1	0	1	0	8	4	0	0	0	0	0
Agriculture Office	1	0	1	0	0	0	0	0	0	0	0
Social Affairs Office	1	0	0	0	0	0	0	0	0	0	0
Public Work Office	1	0	0	0	0	0	0	0	0	0	0
Lan Management Office	1	0	0	0	1	0	0	0	0	0	0
Industry Office	1	0	0	0	0	0	0	0	0	0	0

### 13.6 Properties and Equipment of District Administration

#### 13.6.1 Buildings

Description	Unit	Number	Remark
Office building type			
- Concrete	building	0	
- Wood	building	1	
- Mixed	building	0	
Total floor space	m2		
- Concrete	m2	0	
- Wood	m2	0	
- Mixed	m2	0	
Building condition			
- Concrete	%	0	
- Wood	%	0	
- Mixed	%	0	
Office reserved land area	m2	0	
Total office land area	m2	0	

#### 13.6.2 Means of Transport available at the District Administration

Description	Unit	Number	Remark
Vehicle (type, size and condition)	Vehicle	0	
Motorcycle (type, size and condition)	Motor	0	

### 13.6.3 Equipment in District Offices

Description	Unit	Number	Remark
Generator	per set	0	
Photocopy machine at the office	per set	0	
Private photocopy machine at the district town	place	0	
Telephone network (mobile line service)	network	0	
Telephone network (land line service)	network	0	
Fax (include Fax number)	per set	0	
Computer	per set	0	
Printer	per set	0	
Scanner	Per set	0	
Number of computers those can access Internet and email services in the municipality/ district/khan office (including the technical line offices (please provide the email address)	set	0	
Typewriters (including the technical line offices)	per set	0	
Staff of Municipality/district/khan office can use computer	person	0	

### 13.6.4 Equipment and facilities at the District Town

Description	Unit	Number	Remark
Availability of electricity at noon	Nr Hours	12	
Private internet and email services in the municipality/ district/khan town.	place	0	

## 13.7 Registered Revenue of the District Administration in 2008<sup>4</sup>

Sources of Revenue	Revenue Collecting Agency	Estimated annual revenue (In Riels)
Tax on business	District/ Khan Taxation Unit	12,873,460
Public Lightening Tax	District/ Khan Taxation Unit	130,500
Lodging Tax (Guest House and Hotel)	District/ Khan Taxation Unit	122,000
Slaughter Hosue	District/ Khan Taxation Unit	1,185,000

## 13.8 Services in the District

### 13.8.1 Public Sector Services

Type of Infrastructure/services	Unit	Number	
		Public	Private
Schools			
Pre-school	room		
Primary School	room	142	0
Secondary school	room		
High School	room	41	0
University	room		
Health			
Health post	place		
Health center	place	3	0
Referral Hospital	bed	1	0

<sup>4</sup> Please note that the data in this table are at best estimates. If the table appears blank it does not mean there is no revenue, just that the data have not been recorded/entered.



## **13.9 *Civil Society Organizations active in the District***

### **13.9.1 NGOs, Associations, Programs and Projects**

### **13.9.2 Political Parties active in the Municipality, District and Khan**

<b>Name</b>	<b>Abbr.</b>	<b>Office in District</b>
Cambodian People Party	CPP	Yes
FUNCINPEC Party	FUNCINPEC	Yes
Human Rights Party	HRP	Yes
NRP	NRP	Yes
SAM RAINSY Party	Sam Rainsy Party	Yes

### 13.10 Private Sector Organizations

#### 13.10.1 Registered Companies in 2008, by District

On private sector at commune and/or district level	KPC	Batheay	Chamkar Leu	Cheung Prey	Dambee	Kampong Cham	Kampong Siem	Kang Meas	Kosh Sotin
<b>Business and Companies</b>									
Number of registered agricultural enterprises (except family farms)	554	0	0	4	0	0	14	0	0
Number of registered shops, restaurants, transporters and other services	2,620	182	0	189	20	111	17	139	62
Number of manufacturing companies	174	2	52	18	0	0	4	2	0
Number of registered forestry enterprises	38	0	1	9	0	0	1	0	6
Number of registered mining companies	48	0	0	13	0	0	3	0	14
Number of financial institutions	77	4	0	4	2	13	8	3	2
Number of other commercial institutions	9	0	6	0	0	0	1	0	0
Estimated number of informal enterprises (not registered)	2,258	122	n/a	63	n/a	n/a	136	250	1223
<b>Employment</b>									
Number of people employed in 2008 by companies or any other enterprises	82,778	31017	0	2413	0	1285	7528	5815	6201
<b>Investment</b>									
Amount invested in 2008 by private sector (\$)	5,956,897	160358	n/a	n/a	n/a	n/a	1260000	n/a	383005
<b>Markets</b>									
Number of markets, operating at least weekly	125	5	6	9	2	7	9	11	13

Continue...

On private sector at commune and/or district level	Kroch Chhmar	Memut	Oraing Ov	Ponhea Kreak	Prey Chhor	Srey Santhor	Steung Trang	Tbong Khmom	Suong
<b>Business and Companies</b>									
Number of registered agricultural enterprises (except family farms)	0	505	0	6	3	6	2	8	6
Number of registered shops, restaurants, transporters and other services	5	210	158	441	233	92	360	215	186
Number of manufacturing companies	0	5	2	8	30	20	1	23	7
Number of registered forestry enterprises	0	0	0	1	0	12	0	3	5
Number of registered mining companies	0	1	0	0	14	0	0	2	1
Number of financial institutions	1	3	2	6	6	2	2	10	9
Number of other commercial institutions	1	1	0	0	0	0	0	0	0
Estimated number of informal enterprises (not registered)	n/a	125	260	n/a	n/a	46	17	10	6
<b>Employment</b>									
Number of people employed in 2008 by companies or any other enterprises	270	4476	5896	4024	83	6700	324	6574	172
<b>Investment</b>									
Amount invested in 2008 by private sector (\$)	190,000	n/a	n/a	n/a	n/a	3,852,884	11,750	n/a	98,900
<b>Markets</b>									
Number of markets, operating at least weekly	6	3	5	6	7	11	15	9	1

**Note:** These data are not comprehensive as different companies and business are registered with different departments and not all departments were able or willing to provide detailed information. The number of informal enterprises reflects a rough estimate, made at provincial level and could not be verified.

**Source:** Unofficially collected at Provincial Level

**13.10.2 Farmers in 2008, by District**

Credit	KPC	Batheay	Chamkar Leu	Cheung Prey	Dambee	Kampong Cham	Kampong Siem	Kang Meas	Kosh Sotin
Volume of credit provided to farmers in 2008 (\$)	47,134,960	3,110,928	500,000	1,968,969	302,500	84,412	4,822,800	1,131,073	417,331
Number of farmers receiving credit in 2008	64,892	2	4,374	3,332	1,815	343	3,830	3,088	1,115
Volume of credit provided to companies in 2008 (\$)	10,908,604	-	-	750,000	-	-	-	3,388,604	-

Continue...

Credit	Kroch Chhmar	Memut	Oraing Ov	Ponhea Kreak	Prey Chhor	Srey Santhor	Steung Trang	Tbong Khmom	Suong
Volume of credit provided to farmers in 2008 (\$)	624,964	5,592,551	2,932,554	4,811,272	10,803,682	3,772,884	2,861	5,210,686	1,045,493
Number of farmers receiving credit in 2008	472	3,565	2,274	10,998	15,310	547	2,778	7,507	3,542
Volume of credit provided to companies in 2008 (\$)	-	610,000	-	-	-	-	-	2,964,125	3,195,875

**Note:** Please note that these data are not necessarily complete or correct. The data are derived from government agencies at provincial and district level which used different recording systems, did not always have complete data or were, sometimes, less than willing to share their data.

**Source:** Unofficially collected at Provincial Level

## **SECTION E: POVERTY DATA**



## 14 Data on Poverty

### 14.1 Predicted Poverty Rates for 2009, by commune

The **Predicted Family Poverty Rate** is based on a statistical model (robust multilevel mixed effect regression) at village level developed by the NCDD M&E Unit and uses CDB data for making an estimate of the predicted poverty rate (this is: *the portion of total families in the district or commune who are expected to be poor*) for the following year using current year data.

The basis for this predicted poverty rate also uses IDPoor (a project of the Ministry of Planning with technical assistance provided by GTZ) data

Commune	2004	2009
Suong	24.80%	9.90%
Vihear Luong	26.40%	19.70%

### 14.2 Poverty data from survey

#### 14.2.1 Identification of Poor Households Program (IDPoor)

The Ministry of Planning IDPoor Program has developed standardized Procedures for Identification of Poor Households in rural areas. These Procedures are implemented using a participatory and consultative process by sub-national government structures and community representatives.

The IDPoor Program is managed by the Ministry of Planning (MOP), in cooperation with the Ministry of Interior's Department of Local Administration (DOLA). The program is supported by the Federal Republic of Germany, with technical assistance provided by German Technical Cooperation (GTZ). In 2009, AusAID also provided funding support to the Program.

#### Objective

The IDPoor Program aims to implement the Procedures for Identification of Poor Households in rural areas as widely as possible, in order to provide data on the level of poverty of areas and households that can be used by a large range of institutions and organizations for targeting services and development assistance to poor areas and poor households.

**Coverage:** During 2007, 2008 and 2009 the IDPoor Procedures have been implemented in 18 provinces (with partial or complete coverage), covering a total of around 7000 rural villages. The MOP and a number of NGO partners who are Health Equity Fund Operators have collaborated in collecting this data from different areas.

**Categorization:** Identified poor households are classified under two poverty categories: Poor Level 1 (very poor), and Poor Level 2 (poor). Households are classified based on data collected using a standard questionnaire, together with consideration by villagers of these households' special circumstances.

**Further information:** Please go to the IDPoor Program webpage at [www.mop.gov.kh/Projects/IDPoor/tabid/154/Default.aspx](http://www.mop.gov.kh/Projects/IDPoor/tabid/154/Default.aspx)

*This District has not yet been covered by IDPoor*